

INSTRUCTIONS

1. Original and/or subsequent record used to evaluate the corner position.
2. Description of evidence found, note discrepancies in the record, state method of establishing lost or obliterated corners.
3. Description of monument and accessories set to perpetuate the corner position.
4. Sketch of corner, show all pertinent data which can best be shown in a sketch example, corner marking, topography ties, position of accessories, etc.
5. Certification must be signed and sealed by Land Surveyor registered in the State of Montana.
6. Fill in Cross Index & Section Diagram at bottom of sheet.

CERTIFIED CORNER RECORDATION

Corner #3, HES 353 T. 32N R. 27W P.M.M. Lincoln County

- I. 1915 USFS Record: Set pinepost with a nail in the top over a stone with a mound of earth alongside and 2 BT's.

1961 BLM Remonumentation: Cor. No. 3 of H.E.S. 353 as determined from the remains of the rotted original wood post corner. From which the original bearing trees:

A larch stump, 16 ins. diam., bears S54°E, 23 lks. dist., with BT visible. (Record: S47°20'E, 22 lks. dist.)

A pine, 14 ins. diam., bears S32°W, 29 lks. dist., mkd. 3 HES 353 BT. (Record: S38°47'W, 29 lks. dist.)

At the corner point

Set an iron post, 30 ins. long, 2½ ins. diam., 26 ins. in the ground, in concrete, with brass cap mkd.

T32N R27W

Cor 3
HES
353

S9

1961

from which

A larch, 5 ins. diam., bears N27°E., 26 lks. dist., mkd. COR 3 HES 353 BT.

A spruce, 8 ins. diam., bears S31½°E, 62 lks. dist., mkd. COR 3 HES 353 BT.

Set a wooden post, 5 ft. long, 5 ins. diam., in the ground alongside the iron post.

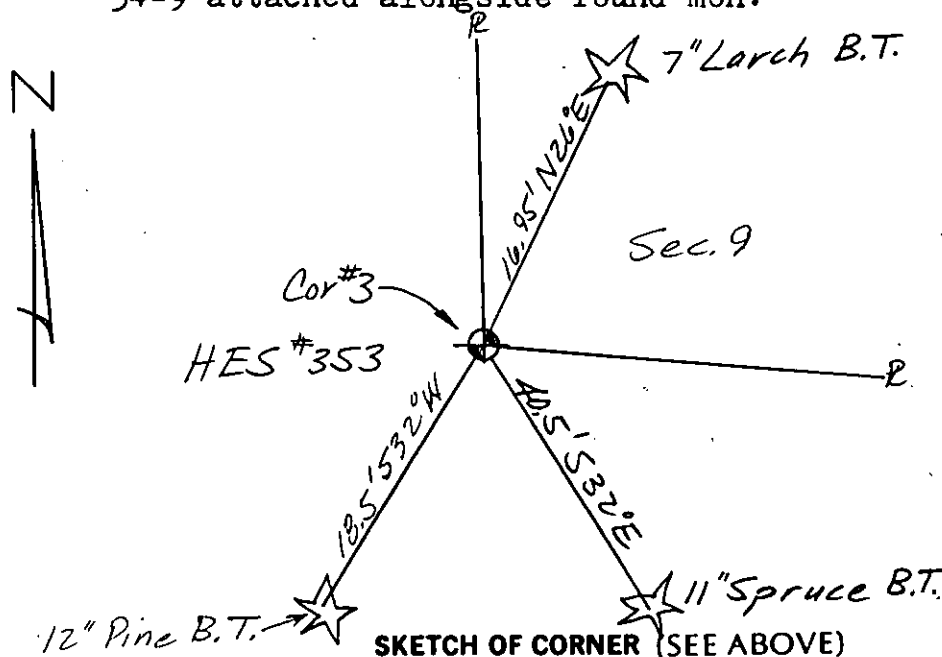
- II. I found a BLM brass cap, flush with the ground surface, marked as shown, and from which:

A 7 in. larch bears N26°E, 16.95 ft., scribing visible.

A 11 in. spruce bears S32°E, 40.5 ft., scribing visible.

A 12 in. pine bears S32°W, 18.5 ft., scribing overgrown.

- III. I paint red bands around the BT's and paint the blazes and attach USFS signs 54-3 & 54-9 to each BT. I set USFS steel post with decals 54-2 & 54-9 attached alongside found mon.



SKETCH OF CORNER (SEE ABOVE)

CERTIFICATION	
I. Dennis D. Findorff	certify the information shown herein is true and correct.
<i>Dennis D. Findorff</i>	Signature Ground Party Chief
1. Robert E. Findorff	certify that this Corner Record correctly represents work performed by me or under my direction in compliance with the "Corner Recordation Act" (M.C.A.)
<i>Robert E. Findorff</i>	Signature of Surveyor
Date: 8/13/85	Reg. No. 3976ES
Employer: Self	

Office of Clerk and Recorder, County of Lincoln. This "corner

record" was filed for record on Oct 23, 1985

was noted on the cross-index plat and is assigned page No. 3152, in

book No. _____

Janet B. Sigel by Eric Buckhoff
County Official

Sec.

Cross Index No. _____ T. _____ R. _____ P.M.M.

Adopted July 1, 1981, Montana Board of Professional Engineers & Land Surveyors

• - corner this sheet