

INSTRUCTIONS

1. Original and/or subsequent record used to evaluate the corner position.
2. Description of evidence found, note discrepancies in the record, state method of establishing lost or obliterated corners.
3. Description of monument and accessories set to perpetuate the corner position.
4. Sketch of corner, show all pertinent data which can best be shown in a sketch example, corner marking, topography ties, position of accessories, etc.
5. Certification must be signed and sealed by Land Surveyor registered in the State of Montana.
6. Fill in Cross Index & Section Diagram at bottom of sheet.

CERTIFIED CORNER RECORDATION

Corner # 2, HES 353 T. 32N R. 27W P.M.M. Lincoln County
 I. 1915 USFS Record: Set stone with mound of earth and marked 2 BT's.

1961 BLM Remonumentation: Cor. No. 2 of H.E.S. 353, monumented with a limestone, 25x12x4 ins., firmly set in the ground and marked 2 HES 353 on the SW face and an X on the top. From which the original bearing trees:

A pine, 10 ins. diam., bears $N61\frac{1}{4}^{\circ}E$, 18 lks. dist., mkd. 2 HES 353 BT. (Record).

A pine, 8 ins. diam., bears $S88\frac{1}{2}^{\circ}W$ 45 lks. dist., mkd. 2 HES 353 BT. (Record: $N86^{\circ}50'W$ 45 lks. dist.)

At the corner point

Set an iron post, 30 ins. long, $2\frac{1}{2}$ ins. diam., 27 ins. in the ground, in concrete, with brass cap mkd.

T32N R27W

Cor 2
HES
353

from which

1961

A larch, 8 ins. diam., bears $N39\frac{1}{4}^{\circ}E$, 85 lks. dist., mkd. COR 2 HES 353 BT

A pine, 8 ins. diam., bears WEST, 74 lks. dist., mkd. COR 2 HES 353 BT.

Bury the original stone alongside the iron post.

Set a wooden post, 6 ft. long, 6 ins. diam., in the ground alongside the iron post.

Raise a mound of stone, 3 ft. base, 2 ft., high SW of the iron post.

II. I found a BLM brass cap in stone pile, marked as shown, and from which:

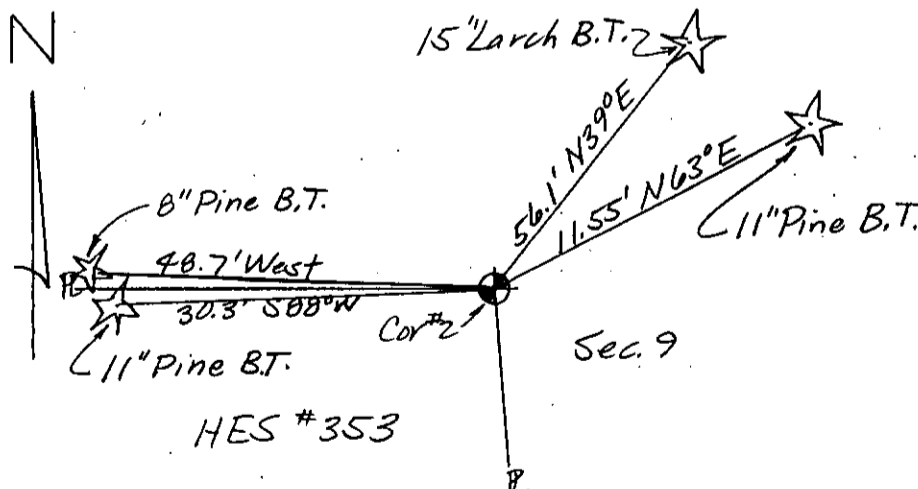
A 15 in. larch bears $N39^{\circ}E$, 56.1 ft., scribing visible.

A 11 in. pine bears $N63^{\circ}E$, 11.55 ft., scribing overgrown.

A 11 in. pine bears $S88^{\circ}W$, 30.3 ft., scribing overgrown.

A 8 in. pine bears West, 48.7 ft., scribing visible.

III. I paint red bands around the BT's and paint the blazes and attach USFS signs 54-3 & 54-9 to each BT. I set USFS steel post with decals 54-2 & 54-9 attached alongside found mon.



SKETCH OF CORNER (SEE ABOVE)

CERTIFICATION	
1.	Dennis D. Findorff
certify the information shown herein is true and correct.	
<i>Dennis D. Findorff</i>	
Signature Ground Party Chief	
1.	Robert E. Findorff
certify that this Corner Record correctly represents work performed by me or under my direction in compliance with the "Corner Recordation Act" (MCA 101, et seq., M.C.A.)	
<i>Robert E. Findorff</i>	
Signature of Surveyor & Seal	
Date:	8/13/85
Reg. No.	3976ES
Employer:	Self

Office of Clerk and Recorder, County of Lincoln. This "corner record" was filed for record on Oct 23, 1985 was noted on the cross-index plat and is assigned page No. 3151, in book No. _____

Cross Index No. _____ T. _____ R. _____ PMM

Adopted July 1, 1981, Montana Board of Professional Engineers & Land Surveyors

Sec.			

• - corner this sheet