

INSTRUCTIONS

1. Original and/or subsequent record used to evaluate the corner position.
2. Description of evidence found, note discrepancies in the record, state method of establishing lost or obliterated corners.
3. Description of monument and accessories set to perpetuate the corner position.
4. Sketch of corner, show all pertinent data which can best be shown in a sketch example, corner marking, topography ties, position of accessories, etc.
5. Certification must be signed and sealed by Land Surveyor registered in the State of Montana.
6. Fill in Cross Index & Section Diagram at bottom of sheet.

CERTIFIED CORNER RECORDATION

Corner #1, HES #353 T. 32N R. 27W P.M.M. Lincoln County

I. 1915 USFS Record: Set stone with mound of earth and marked 2 BT's.

1961 BLM Remonumentation: Cor. No. 1 of H.E.S. 353, monumented with a slate stone, 30x18x8 ins., firmly set in ground and marked 1 HES 353 on the SE face and an X on the top. From which the original bearing trees:

A fir, 20 ins. diam., bears N77°55'E, 27 lks. dist., with scribing overgrown. (Record).

A spruce, 20 ins. diam., bears S2 1/4°W, 73 lks. dist., with scribing overgrown. (Record: S1°07'W 74 lks. dist.)

At the corner point

Set an iron post, 30 ins. long, 2 1/2 ins. diam., 24 ins. in the ground, in concrete, with brass cap mkd.

T32N R27W

S4

Cor 1
HES
353

1961

from which

A pine, 6 ins. diam., bears S83°E., 60 lks. dist., mkd. COR 1 HES 353 BT.

A spruce, 5 ins. diam., bears S 1/2°E, 113 lks. dist., mkd. COR 1 HES 353 BT.

Bury the original stone alongside the iron post.

Set a wooden post, 4 ft. long, 4 ins. diam., in the ground alongside the iron post.

Raise a mound of stone, 3 ft. base, 2 ft. high, SE of the iron post.

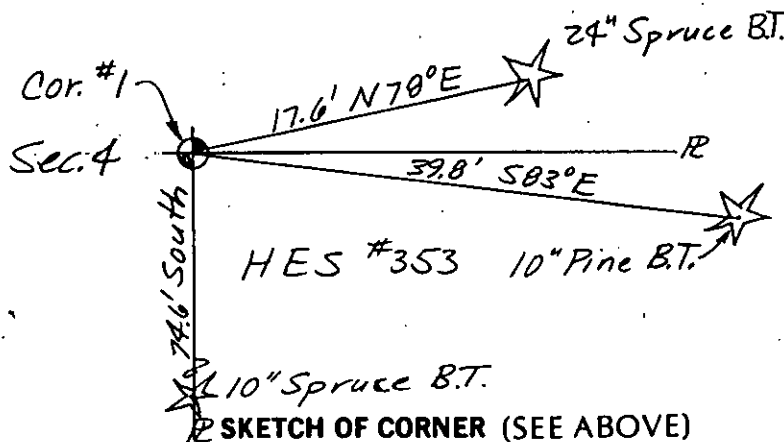
II. I found a BLM brass cap in stone pile, marked as shown, and from which:

A 24 in. fir bears N78°E, 17.6 ft., scribing overgrown.

A 10 in. pine bears S83°E, 39.8 ft., scribing visible.

A 10 in. spruce bears South, 74.6 ft., scribing visible.

III. I paint red bands around the BT's and paint the blazes and attach USFS signs 54-3 & 54-9 to each BT. I set USFS steel post with decals 54-2 & 54-9 attached alongside found mon.



SKETCH OF CORNER (SEE ABOVE)

CERTIFICATION

1. Dennis D. Findorff

certify the information shown herein is true and correct.

Signature of Ground Party Chief

1. Robert E. Findorff

certify that this Corner Record correctly represents work performed by me or under my direction in compliance with the Corner Recordation Act, 70-101, et seq., M.C.A.

Signature of Surveyor & Seal

Date 8/13/85 Reg. No. 3976ES

Employer: Self

Office of Clerk and Recorder, County of Lincoln. This "corner record" was filed for record on Oct 23, 1985

was noted on the cross-index plat and is assigned page No. 3150, in

book No. _____

Count by Seal by Bill Findorff
County Official

Sec.

Cross Index No. _____ T. _____ R. _____ P.M.M.

Adopted July 1, 1981, Montana Board of Professional Engineers & Land Surveyors

• corner this sheet