

INSTRUCTIONS

1. Original and/or subsequent record used to evaluate the corner position.
2. Description of evidence found, note discrepancies in the record, state method of establishing lost or obliterated corners.
3. Description of monument and accessories set to perpetuate the corner position.
4. Sketch of corner, show all pertinent data which can best be shown in a sketch example, corner marking, topography ties, position of accessories, etc.
5. Certification must be signed and sealed by Land Surveyor registered in the State of Montana.
6. Fill in Cross Index & Section Diagram at bottom of sheet.

CERTIFIED CORNER RECORDATION

Corner East 1/4 S24 only T. 33 N. R. 26 W. P.M.M. Lincoln County

I. 1903 GLO record by Gordon C. Smith: Set a stone and two bearing trees.

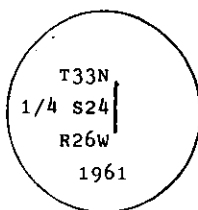
1934 Resurvey record by Philip L. Inch: "This 1/4 sec. cor. will hereafter refer to sec. 24 only, therefore I erase the markings on the bearing tree NE of Cor. Establish a bearing tree."

1961 BLM remonumentation record: The 1/4 sec. cor. of sec. 24, only monumented with a sandstone, 8x8x10 ins., loosely set in the ground and mkd. 1/4 on the W face.

from which the original bearing trees:

- A fir, 10 ins. diam., bears S42°W, 21 lks. (13.86 ft.) dist., mkd. 1/4 S24 BT.
(Record: S42 3/4°W, 21 lks. dist.)
A fir, 6 ins. diam., bears N81 1/2°W, 8 lks. (5.28 ft.) dist., mkd. 1/4 S24 BT.
(Record: S86 1/2°W, 8 lks. dist.)

At the corner point set an iron post, 30 ins. long, 2 1/2 ins. diam., 26 ins. in the ground, with brass cap mkd.



From which:

- A fir, 8 ins. diam., bears N23°W, 25 lks. (16.50 ft.) dist., mkd. 1/4 S24 BT.

II. Found a 2 1/2 ins. diam. iron pipe 4 ins. out of the ground with BLM brass cap mkd. as shown.

From which:

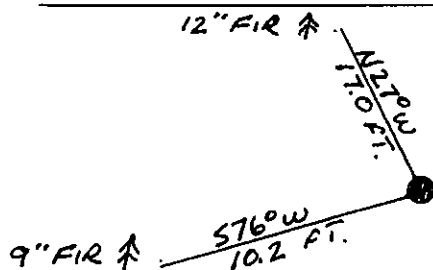
- A fir stump, 11 ins. diam., bears S43°W, 13.9 ft. dist., mkd. 1/4 S24 BT.
A fir, 12 ins. diam., bears N27°W, 17.0 ft. dist., healed face.

III. Established one new bearing tree:

- A fir, 9 ins. diam., bears S76°W, 10.2 ft. dist., mkd. 1/4 S24 BT.

Painted red bands around the bearing trees and attached "Land Survey Monument" and "Bearing Tree" signs.
Set a galvanized steel guard post with "Land Survey Marker" and Property Boundary: decals, North, 3 ft.

Magnetic declination: 20° East



SKETCH OF CORNER

CERTIFIED

I, Kevin A. Todd,
certify the information shown here

Kevin A. Todd
Signature Ground Surveyor

I, Ronald A. Pearson,
certify that this Corner Record correctly represents work performed
by me or under my direction in compliance with the "Corner
Recordation Act" (70-22-101, et seq., M.C.A.)

Ronald A. Pearson
Signature of Surveyor & Seal

Date: 12/17/92 Reg. No. 9008LS

Employer: U.S. FOREST SERVICE

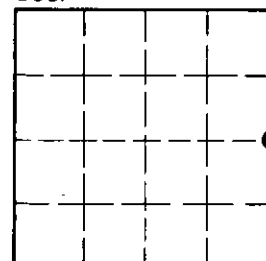
Office of Clerk and Recorder, County of Lincoln. This "corner
record" was filed for record on 1-4-93
was noted on the cross-index plat and is assigned page No. 5218, in
book No. _____

Chas M Cummings by BLS
County Official

P-25 33 N 26W

Cross Index No. _____ T. _____ R. _____ PMM

Sec. 24



• corner this sheet