

INSTRUCTIONS

1. Original and/or subsequent record used to evaluate the corner position.
2. Description of evidence found, note discrepancies in the record, state method of establishing lost or obliterated corners.
3. Description of monument and accessories set to perpetuate the corner position.
4. Sketch of corner, show all pertinent data which can best be shown in a sketch example, corner marking, topography ties, position of accessories, etc.
5. Certification must be signed and sealed by Land Surveyor registered in the State of Montana.
6. Fill in Cross Index & Section Diagram at bottom of sheet.

CERTIFIED CORNER RECORDATION

Corner East 1/4 S25 only T. 33 N. R. 26 W. P.M.M. Lincoln County

I. 1903 GLO record by Gordon C. Smith: Set a stone and two bearing trees.

1934 Resurvey record by Philip L. Inch: "This 1/4 sec. cor. will hereafter refer to sec. 25 only. Bearing trees are established:"

1961 BLM remonumentation record: The 1/4 sec. cor. of sec. 25, only monumented with a granite stone. 8x10x12 ins., firmly set in the ground and mkd. 1/4 on the W face.

from which the original bearing trees:

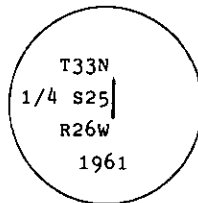
A fir, 10 ins. diam., bears S72°W, 54 lks. (35.64 ft.) dist., mkd. 1/4 S25 BT.

(Record: S71 1/4°W, 53 lks. (34.98 ft.) dist.)

A larch stump, 16 ins. diam., bears N63°W, 36 lks. (23.76 ft.) dist., with evidence of scribing.

(Record: N62 1/2°W, 35 lks. (23.10 ft.) dist.)

At the corner point set an iron post, 30 ins. long, 2 1/2 ins. diam., 26 ins. in the ground, with brass cap mkd.



From which:

A fir, 12 ins. diam., bears S30 1/2°W, 20 lks. (13.20 ft.) dist., mkd. 1/4 S25 BT.

A fir, 12 ins. diam., bears N33°W, 44 lks. (29.04 ft.) dist., mkd. 1/4 S25 BT.

II. Found a 2 1/2 ins. diam. iron pipe 4 ins. out of the ground with BLM brass cap mkd. as shown.

From which:

A fir, 16 ins. diam., bears S31°W, 13.0 ft. dist., healed face.

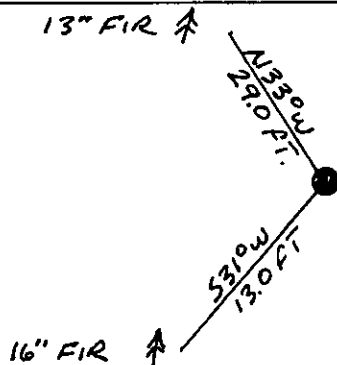
A fallen fir, 10 ins. diam., bears S70°W, 35.5 ft. dist., healed face.

A larch stump, 17 ins. diam., bears N63°W, 23.7 ft. dist., visible scribing.

A fir, 13 ins. diam., bears N33°W, 29.0 ft. dist., mkd. 1/4 S25 BT.

III. Painted red bands around the bearing trees and attached "Land Survey Monument" and "Bearing Tree" signs. Set a galvanized steel guard post with "Land Survey Marker" and Property Boundary: decals, North, 3 ft.

Magnetic declination: 20° East



SKETCH OF CORNER

MONTANA

CERTIFIED **RONALD A. PEARSON**

I, Kevin A. Todd, certify the information shown herein is correct.

Kevin A. Todd
Signature of County Clerk

I, Ronald A. Pearson, certify that this Corner Record correctly represents work performed by me or under my direction in compliance with the "Corner Recordation Act" (70-22-101, et seq., M.C.A.)

Ronald A. Pearson
Signature of Surveyor & Seal

Date: 12/17/92 Reg. No. 9008LS

Employer: U.S. FOREST SERVICE

Office of Clerk and Recorder, County of Lincoln. This "corner record" was filed for record on 1-4-93 was noted on the cross-index plat and is assigned page No. 5217, in book No. Chalm Cummings by BLS

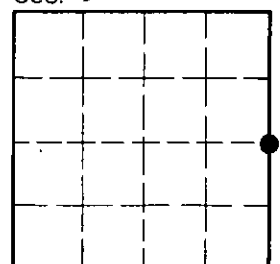
County Official

T-25

33 N 26W

Cross Index No. _____ T. _____ R. _____ PMM

Sec. 25



• - corner this sheet