

INSTRUCTIONS

1. Original and/or subsequent record used to evaluate the corner position.
2. Description of evidence found, note discrepancies in the record, state method of establishing lost or obliterated corners.
3. Description of monument and accessories set to perpetuate the corner position.
4. Sketch of corner, show all pertinent data which can best be shown in a sketch example, corner marking, topography ties, position of accessories, etc.
5. Certification must be signed and sealed by Land Surveyor registered in the State of Montana.
6. Fill in Cross Index & Section Diagram at bottom of sheet.

CERTIFIED CORNER RECORDATION

Corner W 1/4 Sec. 24 T. 33 N. R. 26 W. P.M.M. Lincoln County

I. 1903 GLO record by Gordon C. Smith: Set a stone and two bearing trees.

1960 BLM remonumentation record: The 1/4 sec. cor. of secs. 23 and 24, monumented with a shale stone, 6x8x14 ins., firmly set in the ground, mkd. 1/4 on the W face.

from which the original bearing trees:

- A larch, 14 ins. diam., bears N18 1/2° E, 45 lks. (29.70 ft.) dist., mkd. 1/4 S24 BT. (Record)
 A fir, 9 ins. diam., bears N27 1/2° W, 52 lks. (34.32 ft.) dist., mkd. 1/4 S23 BT. (Record)

At the corner point set an iron post, 30 ins. long, 2 1/2 ins. diam., 26 ins. in the ground and concrete with brass cap mkd.

T33N R26W
 1/4
 S23 | S24
 1960

From which:

A fir, 5 ins. diam., bears N75° W, 17 lks. (11.22 ft.) dist., mkd. 1/4 S23 BT.

II. Found a 2 1/2 ins. diam. iron pipe 4 ins. out of the ground with BLM brass cap mkd. as shown.

From which:

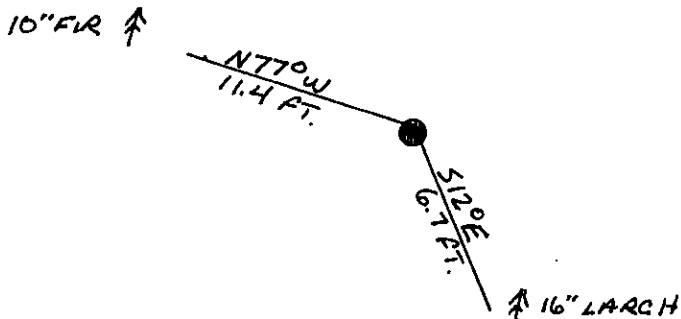
- A larch stump, 16 ins. diam., bears N18° E, 29.5 ft.
 A fir, 10 ins. diam., bears N77° W, 11.4 ft. dist., healed face.
 A rotten fir stump, bears N28° W, 34.0 ft. dist.

III. Established one new bearing tree:

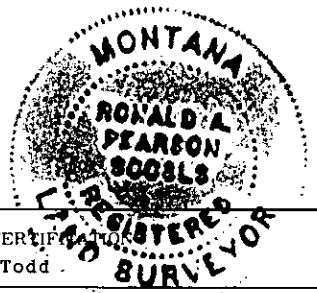
A larch, 16 ins. diam., bears S12° E, 6.7 ft. dist., mkd. 1/4 S24 BT.

Painted red bands around the bearing trees and attached "Land Survey Monument" and "Bearing Tree" signs.
 Set a galvanized steel guard post with "Land Survey Marker" and Property Boundary: decals, North, 3 ft.

Magnetic declination: 20° East



SKETCH OF CORNER



I, Kevin A. Todd
 certify the information shown herein is true and correct.

Kevin A. Todd
 Signature Ground Party Chief

I, Ronald A. Pearson
 certify that this Corner Record correctly represents work performed by me or under my direction in compliance with the "Corner Recordation Act" (70-22-101, et seq., M.C.A.)

Ronald A. Pearson
 Signature of Surveyor & Seal
 Date: 12/17/92 Reg. No. 9008LS
 Employer: U.S. FOREST SERVICE

Office of Clerk and Recorder, County of Lincoln. This "corner record" was filed for record on 1-4-93 was noted on the cross-index plat and is assigned page No. 5211, in book No. Coral M Cummings by BFB

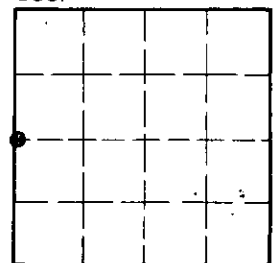
County Official

P-21

33 N 26W

Cross Index No. T. R. PMM

Sec. 24



• - corner this sheet