

INSTRUCTIONS

1. Original and/or subsequent record used to evaluate the corner position.
2. Description of evidence found, note discrepancies in the record; state method of establishing lost or obliterated corners.
3. Description of monument and accessories set to perpetuate the corner position.
4. Sketch or corner, show all pertinent data which can best be shown in a sketch example, corner marking, topography ties, position of accessories, etc.
5. Certification must be signed and sealed by Registered Land Surveyor in State of Montana.
6. Fill in Cross Index & Section Diagram at bottom of sheet.

CERTIFIED CORNER RECORDATION

Corner W 1/4 Section 7 T. 33 N R. 26 W P.M.M. LINCOLN County

RECORD: GLO 1903

The point for 1/4 sec. cor. falls on a limestone in place, 24 X 20 X 6" above ground, on which I cut a cross (X) at the exact point for 1/4 sec. cor., marked 1/4 on W side of cross; from which

A tamarack 10" diam., bears N 33 1/4° E, 18 lks. dist., mkd. 1/4 S7 BT.

A tamarack 9" diam., bears N 86 1/2° W, 18 lks. dist., mkd. 1/4 S12 BT.

RECORD: GLO 1911 Subdivisions of T33N, R27W set closing corner.

RECORD: BLM 1961

The 1/4 sec. cor. of sec. 7, T33N, R26W, only, monumented with an unmarked limestone, 24 X 20 X 9", firmly set in the ground.

from which the original bearing trees:

A stump, 14" diam., bears N 36 1/2° E, 18 lks. dist., mkd. 1/4 S7 BT. (Record N 33 1/4° E, 18 lks. dist.)

A larch, 9" diam., bears N 84 1/2° W, 18 lks. dist., mkd. 1/4 S12 BT. (Record: N 86 1/2° W, 18 lks. dist.)

At the corner point set an iron post, 30" long, 2 1/2" diam., 26" in the ground with brass cap from which

A fir 6" diam., bears S 83 1/4° E, 23 lks. dist., mkd. 1/4 S7 BT.

Bury the original stone alongside the iron post.

Set a wooden post, 4' long, 4" diam., in the ground alongside the iron post.

FOUND:

3 1/4" BLM Brass Cap on Steel Pipe in a mound of rock.

Stump with downed top S84° E 15.3' scribing showing 1/4 S7 BT.

3' high 13" stump 1/4 S7 BT N35° E 12.2' scribing showing 1/4 S7 BT.

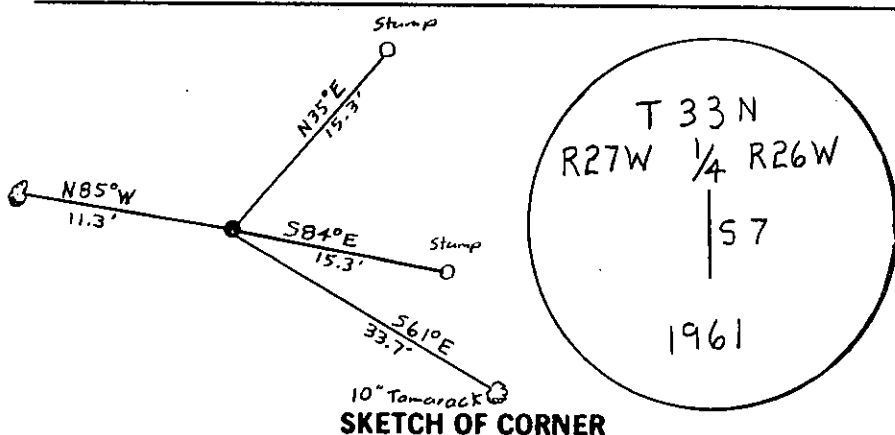
12" tamarack alive bears N 85° W 11.3' scribe overgrown.

MAINTENANCE:

Cleared brush around corner and set a 6' Steel Post 3' away.

10" tamarack S 61° E 33.7' blazed and scribed 1/4 S7 BT.

Painted stump's and scribed area on 12" tamarack with a 6" ring of paint at D.B.H. Attached landsurvey monument signs to the backs.



SKETCH OF CORNER

CERTIFICATION
I, Glenn M. Knodse H. GENE WARREN
certify the information shown herein is true and correct. 2734 S

Glenn M. Knodse
Signature Ground Party

I, H. Gene Warren
certify that this Corner Record correctly represents work performed by me or under my direction in compliance with the "Corner Recordation Act" (70-22-101, et seq., M.D.A.)

H. Gene Warren
Signature of Surveyor & Seal

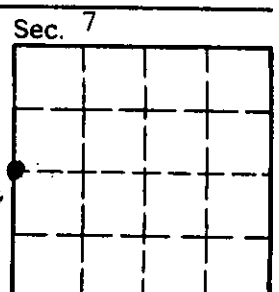
Date: 7-1-88 Reg. No. 2734S

Employer: Rocky Mountain Surveyors

Office of Clerk and Recorder, County of Lincoln. This "corner record" was filed for record on the July 29, 1988 day of 19 88 was noted on the cross-index plat and is assigned page No. 3877, in book No.

County Official

Cross Index No. G-1 T. 33N R. 26W P.M.M.



• - corner this sheet