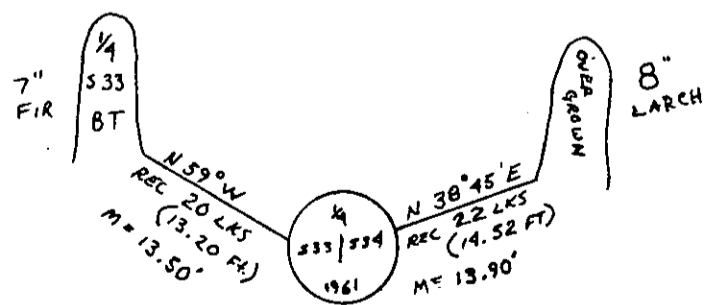


- INSTRUCTIONS
1. Original and/or subsequent record used to evaluate the corner position.
 2. Description of evidence found, note discrepancies in the record, state method of establishing 1/4 corner obliterated corners.
 3. Description of monument and accessories set to perpetuate the corner position.
 4. Sketch or corner, show all pertinent data which can best be shown in a sketch example, corner marking, topography ties, position of accessories, etc.
 5. Certification must be signed and sealed by Registered Land Surveyor in State of Montana.
 6. Fill in Cross Index & Section Diagram at bottom of sheet.

CERTIFIED CORNER RECORDATION

Corner 1/4 SEC. 33 & SEC. 34 T. 33N R. 27 W P.M.M. LINCOLN County

1. RECORD: ORIGINAL 1911, SET A SHALE STONE 24 X 10 X 7 INS., 18 INS. IN THE GROUND FOR 1/4 SEC. COR. MARKED 1/4 WEST FACE. FROM WHICH,
- A TAM. 8" DIAM. BEARS N 29° E 30 LKS. DIST. MARKED 1/4 S 34 BT
- A PINE 16" DIAM. BEARS N 17° W 25 LKS. DIST. MARKED 1/4 S 33 BT.
- RESURVEY 1961 SET A IRON POST 30 INS. LONG 2 1/2 DIAM. 26 INS. IN THE GROUND, WITH BRASS CAP MARKED
- T 33 N R 27 W
S 33 1/4 S 34
1961
- FROM WHICH,
- A LARCH 8" DIAM. BEARS N 38° 3/4 E 22 LKS. DIST. MARKED 1/4 S 34 BT
- A FIR. 5" DIAM. BEARS N 59° W 20 LKS. DIST. MARKED 1/4 S 33 BT
2. FOUND: FOUND MONUMENT AND BOTH BT'S FROM 1961 SURVEY.
3. ACCESSORIES: MAINTAINED BEARING TREES WITH SIGNS AND PAINT, SET A 6' STEEL POST APPROX. 3' NORTH OF MONUMENT.



SKETCH OF CORNER

CERTIFICATION

I, DANIEL J. CROFT
certify the information shown here is true and correct.

Dan Croft
Signature of Ground Party Chief

I, H. GENE WARREN H. GENE
certify that this Corner Record correctly shows the work performed by me or under my direction in compliance with the "Corner Recordation Act" (70-22-101 et seq., M.C.A.)

H. Gene Warren
Signature of Surveyor & Seal

Date: 11/86 Reg. No. 2738

Employer: ROCKY MOUNTAIN SURVEYORS

Office of Clerk and Recorder, County of Lincoln. This "corner record" was filed for record on the Feb 24, day of 1987 was noted on the cross-index plat and is assigned page No. 3526 in book No. _____

Janet B. Sugil by Bert Buckhoff
County Official Deputy

Cross Index No. X-13 T. 33 N R. 27 W P.M.M.

