

- INSTRUCTIONS
1. Original and/or subsequent record used to evaluate the corner position.
  2. Description of place found, note discrepancies in the record, state method of establishing lost or obliterated corners.
  3. Description of monument and accessories set to perpetuate the corner position.
  4. Sketch of corner, show all pertinent data which can best be shown in a sketch example, corner marking, topography lies, position of accessories, etc.
  5. Certification must be signed and sealed by Registered Land Surveyor in State of Montana.
  6. Fill in Cross Index & Section Diagram at bottom of sheet.

## CERTIFIED CORNER RECORDATION

Corner 

2	1
11	12

 T. 33N R. 26W P.M.M. LINCOLN County

I. GLO 1903 RECORD: Set a granite stone, 18 x 12 x 10 ins., 12 ins. in the ground, for cor. of secs. 1, 2, 11, and 12, marked with 5 notches on S. and 1 notch on E. edge, from which:

- A pine, 10 ins. diam., bears N.72½°E., 62 lks. dist., marked T33N R26W S1 BT
- A pine, 9 ins. diam., bears S.57°45'E., 43 lks. dist., marked T33N R26W S12 BT
- A pine, 7 ins. diam., bears S.27½°W., 21 lks. dist., marked T33N R26W, S11 BT
- A pine, 10 ins. diam., bears N.47°W., 4 lks. dist., marked T33N R26W S2 BT

II. Corner falls approximately 3' West of ditch of existing road. No evidence of stone or BT's found.

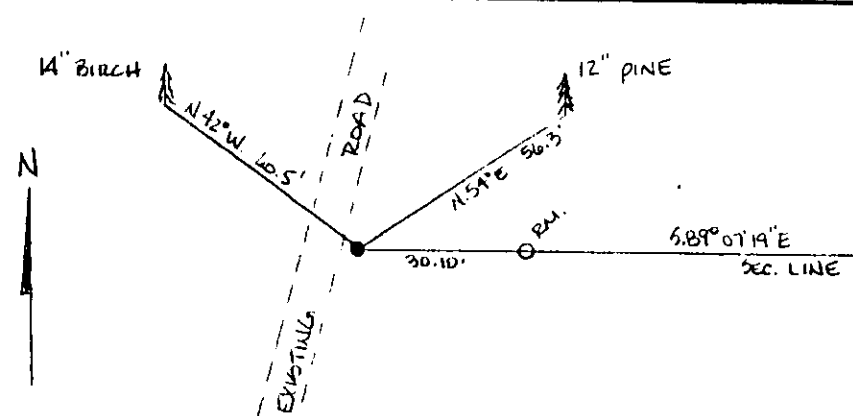
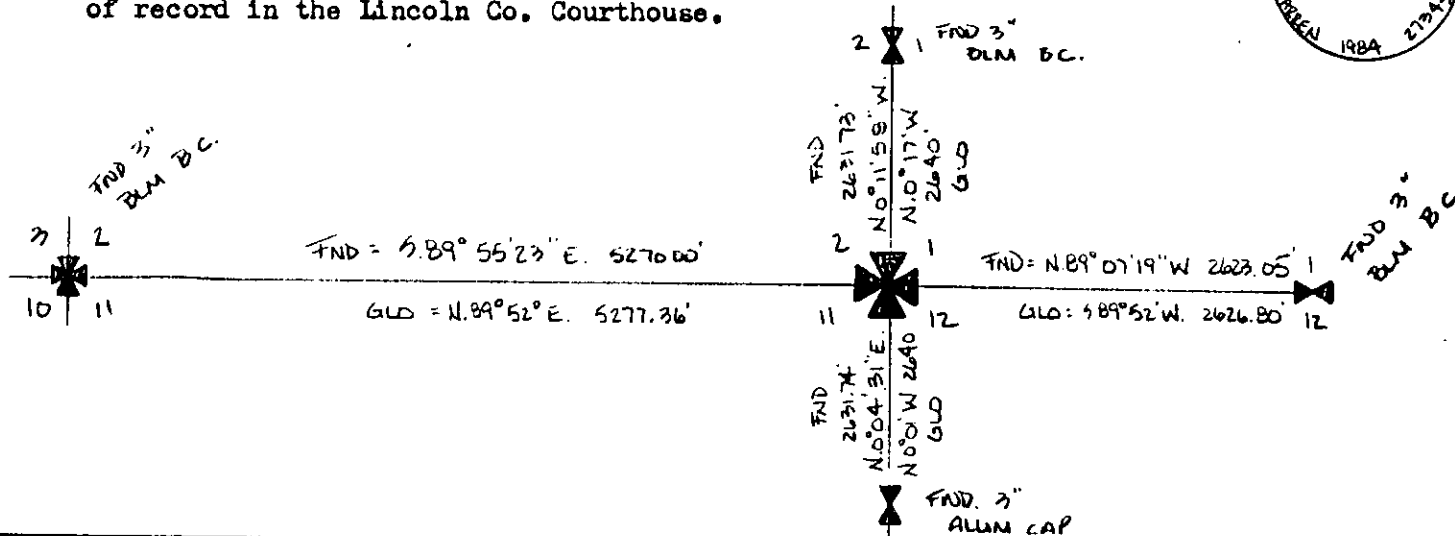
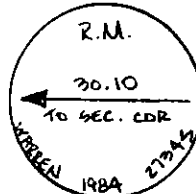
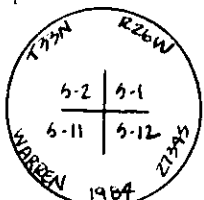
I position corner by double proportion from found S¼ of Sec. 1, found W¼ of Sec. 1, found W¼ of Sec. 12, and found NW Sec. Cor. to Sec. 11.

III. I set a 3" alum. cap for corner position and place a 6' metal post w/survey monument sticker along side cap, from which:

- A 12" pine bears N.54°E., 56.3' scribed T33N R26W S1 BT
- A 14" birch bears N.42°W., 60.5' scribed T33N R26W S2 BT
- A 3" alum. cap bears S.89°07'19"E., on sec. line, 30.10', marked RM

Painted red bands around BT's and painted blazes red.  
Posted BT, Attention, and Location signs.

For additional information see the Certificate of Survey as filed and as of record in the Lincoln Co. Courthouse.



SKETCH OF CORNER

CERTIFICATION

I, GLENN KNODLE  
certify the information shown herein is true and correct.  
Glenn Knodle  
Signature Ground Party Chief

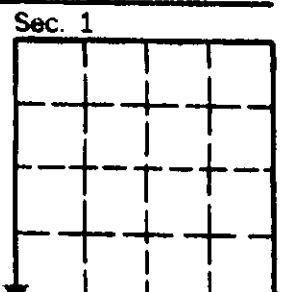
I, H. GENE WARREN  
certify that this Corner Record correctly represents work performed by me or under my direction in compliance with the "Corner Recordation Act" (70-22-101, et seq., M.D.A.)  
H. Gene Warren  
Signature of Surveyor & Seal

Date: 10/04 Reg. No. 27345  
Employer: ROCKY MOUNTAIN SURVEYORS

Office of Clerk and Recorder, County of LINCOLN. This "corner record" was filed for record on the NOV 30 day of 19 84 was noted on the cross-index plat and is assigned page No. 2805, in book No. \_\_\_\_\_

Janet BF Siegel by Betty Conces  
County Official & deputy

Cross Index No. 621 T. 33N R. 26W P.M.M.



• - corner this sheet