

1. Original and/or subsequent record used to evaluate the corner position.
2. Description of evidence found, note discrepancies in the record, state method of establishing lost or obliterated corners.
3. Description of monument and accessories set to perpetuate the corner position.
4. Sketch of corner, show all pertinent data which can best be shown in a sketch example, corner marking, topography lies, position of accessories, etc.
5. Certification must be signed and sealed by Registered Land Surveyor in State of Montana.
6. Fill in Cross Index & Section Diagram at bottom of sheet.

CERTIFIED CORNER RECORDATION

Corner C-S 1/16 Sec. 1 T. 33N R. 26W P.M.M. LINCOLN County

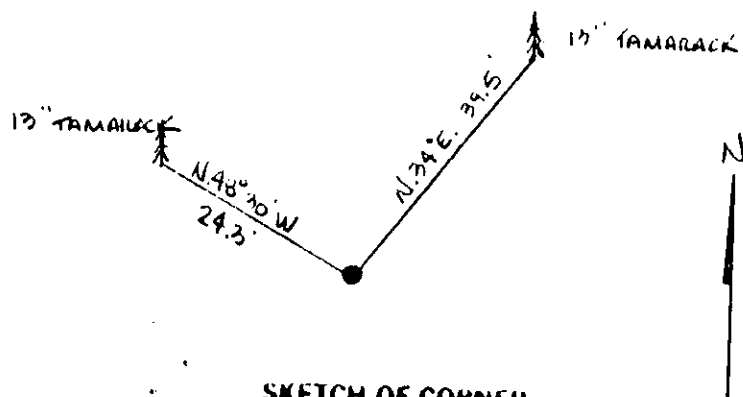
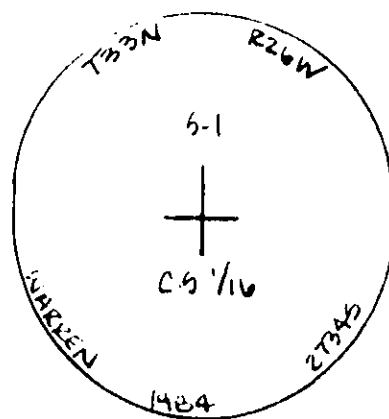
No record or evidence of corner being previously set.

I position corner from found Section and Quarter corners and as shown on the Certificate of Survey as filed and as of record in the Lincoln Co. Courthouse.

I set a 3" alum. cap for corner position, from which:

A 13" tamarack bears N.34°E., 39.5' scribed C-S 1/16 S1 BT
 a 13" tamarack bears S.48°30'W., 24.3' scribed C-S 1/16 S1 BT

Painted red bands around BT's and painted blazes red.
 Posted BT, Attention, and Location signs.
 Placed a 6' metal post w/survey monument sticker along side cap.



SKETCH OF CORNER

CERTIFICATION

I, GLENN KNODLE
 certify the information shown herein is true and correct.
Glenn Knodle
 Signature of Grant Party Chief

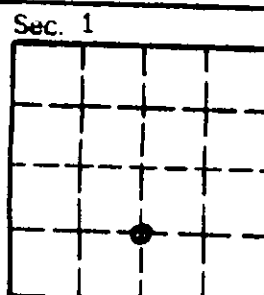
I, H. GENE WARREN
 certify that this Corner Record correctly represents work performed by me or under my direction in compliance with the "Corner Recordation Act" (70-22-101, et seq., M.D.A.)
H. Gene Warren
 Signature of Surveyor & Seal

Date: 10/84 Reg. No. 27345
 Employer: ROCKY MOUNTAIN SURVEYORS

Office of Clerk and Recorder, County of LINCOLN. This "corner record" was filed for record on the Nov 30 day of 19 84 was noted on the cross-index plat and is assigned page No. 2802, in book No. _____

Janet BF Sigel by Betty Conces
 County Official deputy

Cross Index No. D23 T. 33N R. 26W P.M.M.



• - corner this sheet