

INSTRUCTIONS

1. Original and/or subsequent record used to evaluate the corner position.
2. Description of evidence found, note discrepancies in the record, state method of establishing lost or obliterated corners.
3. Description of monument and accessories set to perpetuate the corner position.
4. Sketch or corner, show all pertinent data which can best be shown in a sketch example, corner marking, topography ties, position of accessories, etc.
5. Certification must be signed and sealed by Registered Land Surveyor in State of Montana.
6. Fill in Cross Index & Section Diagram at bottom of sheet.

CERTIFIED CORNER RECORDATION

Corner CN $\frac{1}{16}$ Sec 27 T. 33N R. 26W P.M.M. Lincoln County

There is no previous record of this corner having been set.

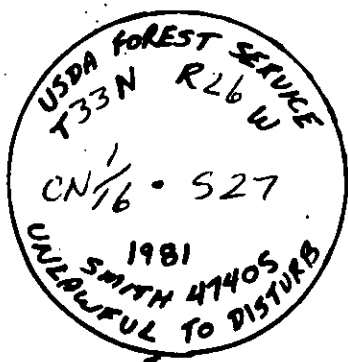
Set a 2 in x 30 in. Aluminium Pipe with a 3½ in diameter Aluminium cap stamped as shown and raised a collar of stone.

From which

A 7" Tam. bears S22°W, 5.80 ft.

A 20" Tam. bears N30°W, 44.70 ft.

Both B.T.'s are scribed "CN $\frac{1}{16}$ BT"



SKETCH OF CORNER

CERTIFICATION

1. Murray Graham III
certify the information shown herein is true and correct.

Murray Graham III
Signature Ground Party Chief

1. S.R. SMITH
certify that this Corner Record correctly represents work performed by me or under by direction in compliance with the "Corner Recordation Act" (70-22-101, et seq., M.D.A.)

S.R. Smith
Signature of Surveyor & Seal

Date: 2/19/82 Reg. No. 47405

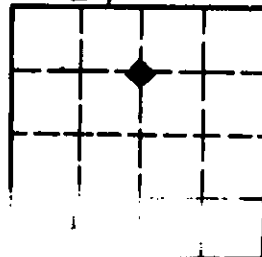
Employer: SMITH SURVEYING CO.

Office of Clerk and Recorder, County of Lincoln. This "corner record" was filed for record on the July 28th day of 1982 was noted on the cross-index plat and is assigned page No. 1786, in book No. _____

Eleanor L. Vaughn by Betty L. Conces
County Official deputy

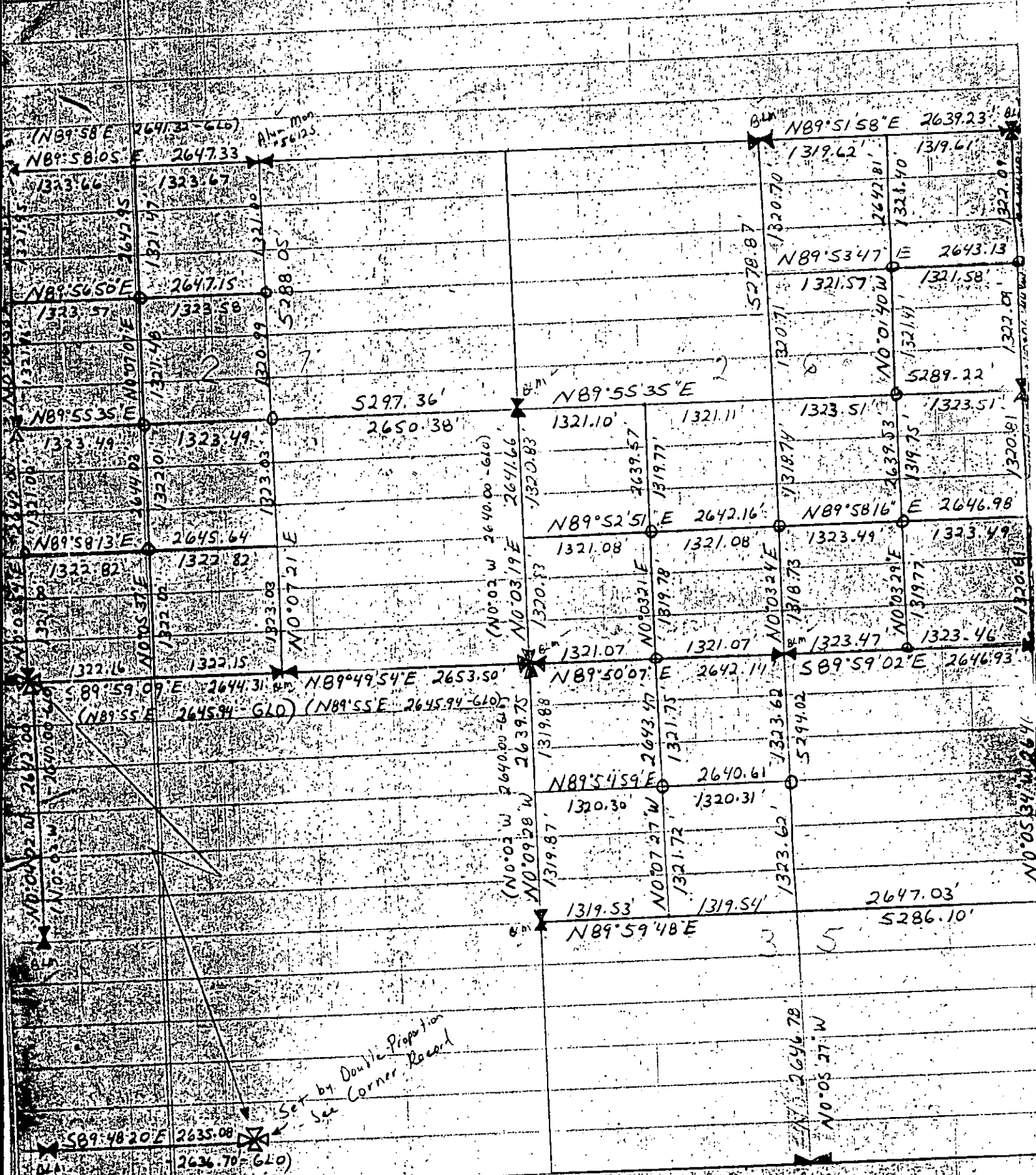
Cross Index No. S-15 T. 33N R. 26W P.M.M.

Sec. 27



• - corner this sheet

Sections 26, 27, & 35 T33N R26W



Set by Double Proportion
See Corner Record

