

INSTRUCTIONS

1. Original and/or subsequent record used to evaluate the corner position.
2. Description of evidence found, note discrepancies in the record, state method of establishing lost or obliterated corners.
3. Description of monument and accessories set to perpetuate the corner position.
4. Sketch or corner, show all pertinent data which can best be shown in a sketch example, corner marking, topography ties, position of accessories, etc.
5. Certification must be signed and sealed by Registered Land Surveyor in State of Montana.
6. Fill in Cross Index & Section Diagram at bottom of sheet.

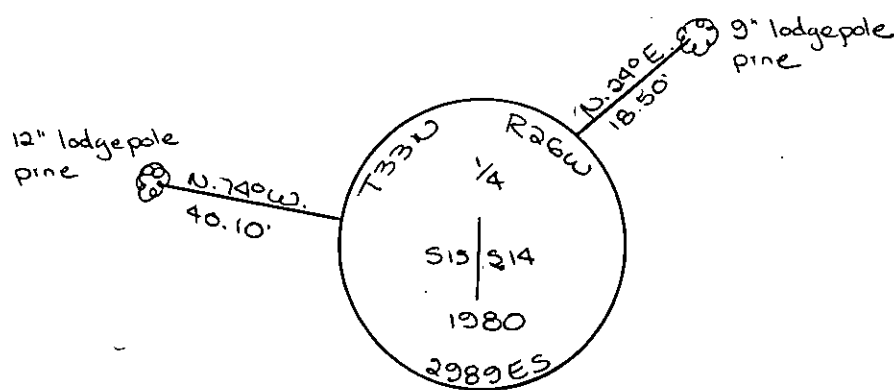
• CERTIFIED CORNER RECORDATION

Corner $\frac{1}{4}$ corner between Sec. 14 & 15 T. 33N R. 26W P.M.M. Lincoln County

Record: Set a granite stone 12x12x6 ins. 8 ins in the ground marked $\frac{1}{4}$ on West face from which:

a pine 3" diam bears N. 46°W 91ks
a pine 3" diam bears N. 73 $\frac{1}{4}$ °E 201ks.

Found original stone. Set aluminum cap. Buried stone alongside.
See C. of S. No. 732 for adjacent corners.



SKETCH OF CORNER

CERTIFICATION

I, _____
certify the information shown herein is true and correct.

Signature Ground Party Chief

I, D. K. Marquardt
certify that this Corner Record correctly represents work performed
by me or under my direction in compliance with the "Corner
Recordation Act" (70-22-101, et seq., M.D.A.)

Signature of Surveyor & Seal

Date: 7-9-81 Reg. No. 2289ES

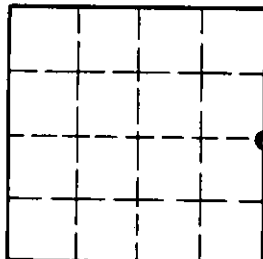
Employer: _____

Office of Clerk and Recorder, County of Lincoln. This "corner
record" was filed for record on the 12th August day of 1981,
was noted on the cross-index plat and is assigned page No. 1179 in
book No. 1

Cleaved L. Vaughan, Jr. Deputy
County Official

Cross Index No. L-17 T. 33N R. 26W P.M.M.

Sec. 15



• corner this sheet