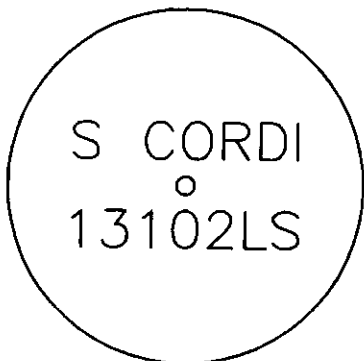
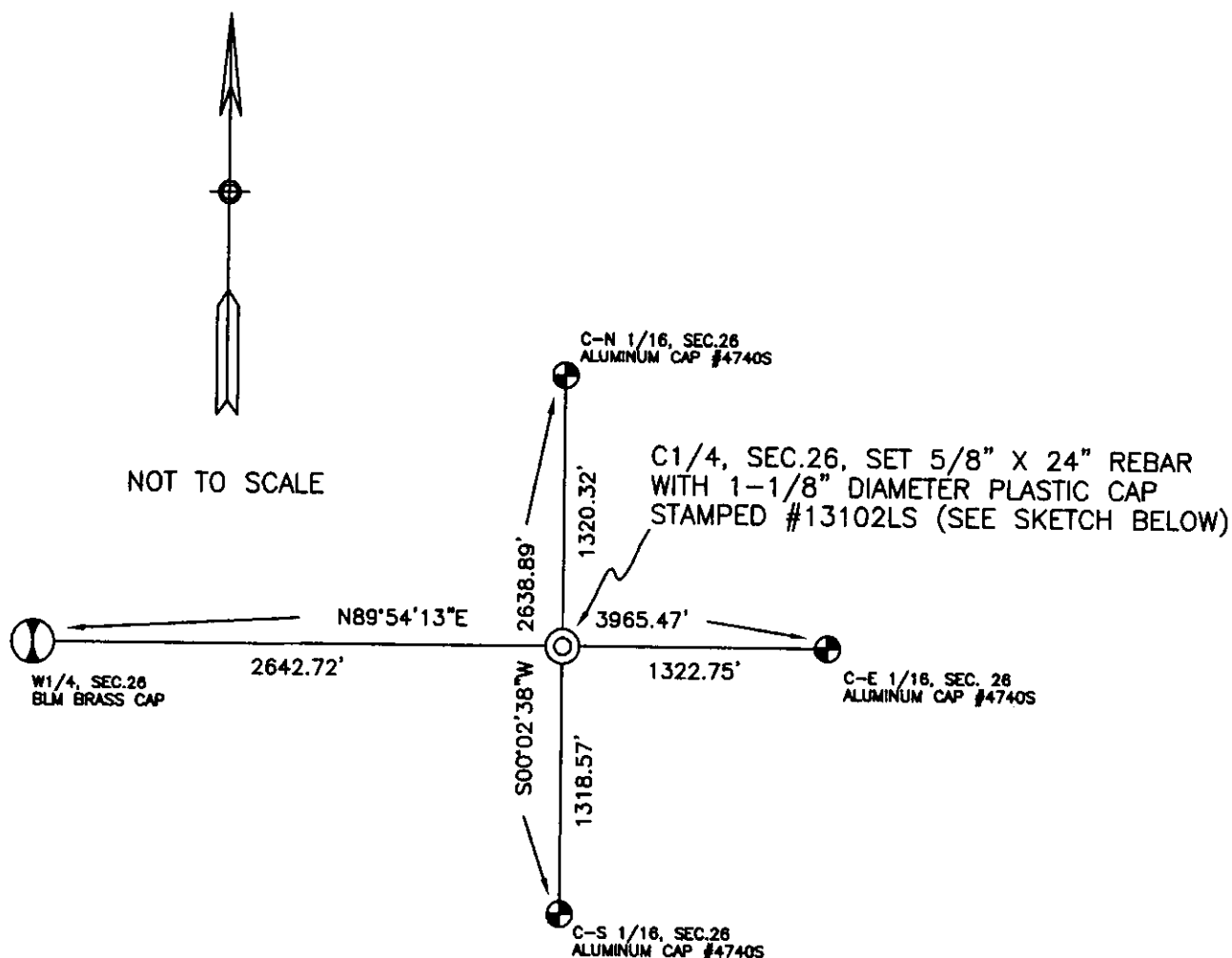


# CERTIFIED CORNER RECORDATION

Corner CENTER 1/4 SECTION 26 T. 33N R. 26W P.M.M. LINCOLN County

- I. TO OUR KNOWLEDGE, THIS CORNER WAS NEVER MONUMENTED.  
II. THIS CORNER WAS ESTABLISHED AS SKETCHED BELOW.



SKETCH OF CORNER

CERTIFICATION

I, AARON J. GUZMAN  
certify the information shown herein is true and correct.

Samuel J. Cordi  
Signature of Surveyor & Seal

I, SAMUEL J. CORDI  
certify that this Corner Record correctly represents work performed by me or under my direction in compliance with the "Corner Recordation Act" (70-22-101 et seq., M.C.A.)

Date: 7/16/09 Reg. No. 13102LS  
Employer: SAM CORDI LAND SURVEYING

MONTANA  
REGISTERED  
SURVEYOR

Office of Clerk and Recorder, County of \_\_\_\_\_ . This "corner

record" was filed to 220411 BOOK: CCR CC&R'S PAGE: 11315 Pages: 1

was noted on the c STATE OF MONTANA LINCOLN COUNTY

book No. \_\_\_\_\_ RECORDED: 07/20/2009 12:40 KOI: CC&R'S

TAMMY D. LAUER CLERK AND RECORDER

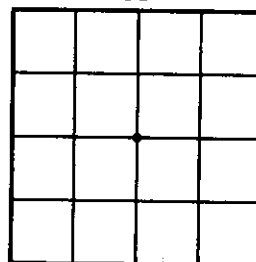
FEE: \$0.00

TO: SAM CORDI P.O. BOX 323, WHITEFISH MT. 59937

Cross Index No. \_\_\_\_\_ T. \_\_\_\_\_ R. \_\_\_\_\_ PMM

Adopted July 1, 1981, Montana Board of Professional Engineers & Land Surveyors

Sec. 26



• corner this sheet