

CERTIFIED CORNER RECORDATION

Corner S12 S13 S18 T 33 N. R. 26 W. P.M.M. LINCOLN County

I. Record: 1893 GLO Survey of the Horse Plains Guide Meridian by Peter M. Cardell and Abram L. Jaqueth; 80.00 chs. Set a limestone, 20x5x4 ins., 15 ins. in the ground, for Cor. to secs. 7, 12, 13 and 18 marked with 4 notches on S. and 2 notches on N. edges; from which:

- A fir, 6 ins. diam., bears N53°E, 42 lks. dist., mkd. T33N R25W S7 BT.
- A fir, 14 ins. diam., bears S58°E, 6 lks. dist., mkd. T33N R25W S18 BT.
- A fir, 12 ins. diam., bears S33°W, 47 lks. dist., mkd. T33N R26W S13 BT.
- A fir, 6 ins. diam., bears N43°W, 13 lks. dist., mkd. T33N R26W S12 BT.

1903 GLO Retracement and Resurvey of the Horse Plains Guide Meridian by Abraham L. Rinearson and Gordon C. Smith; 80.00 chains. Set a limestone, 18x6x6 ins., 12 ins. in the ground, for cor. of secs. 7, 12, 13 and 18, marked with 4 notches on S. and 2 notches on N. edge; from which:

- A tamarack, 8 ins. diam., bears N54°E, 12 lks. dist., marked T33N R25W S7 BT.
- A fir, 9 ins. diam., bears S82 1/4°E, 10 lks. dist., marked T33N R25W S18 BT.
- A fir, 8 ins. diam., bears S28°W, 24 lks. dist., marked T33N R26W S13 BT.
- A fir, 8 ins. diam., bears N44 1/4°W, 19 lks. dist., marked T33N R26W S12 BT.

The old corner, which is a stone, marked and witnessed as described by the Surveyor General, I destroy.

1934 GLO Retracement and Resurvey of the Horse Plains Guide Meridian by Philip L. Inch and Roy Romberg; 71.52 chains. The cor. of secs. 7, 12, 13 and 18, which is a limestone, 6x6x6 ins. above the ground, firmly set, marked and witnessed as described in the official record, with the exception that the SW bearing tree is dead and fallen. This cor. will hereafter refer to secs. 12 and 13 only. Establish a new bearing tree:

- A fir, 7 ins. diam., bears S50 1/2°W, 11 lks. dist., mkd. T33N R26W S13 BT.

Date of Fieldwork: 9/19/2005

Survey crew: Tom Hommel

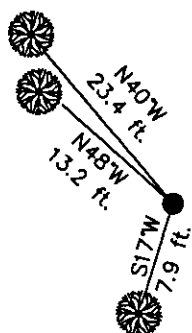
Magnetic declination: 20° East assumed

Equipment used: Hand compass and loggers tape

U.S. Forest Service, Supervisors Office, 1101 Hwy. 2 West, Libby, MT 59923 (406) 293-6211

Page 1 of 2

SKETCH OF CORNER



NOT TO SCALE

CERTIFICATION

I, Thomas M. Hommel 10800LS
certify the information shown herein is true and correct.

Signature Ground Party: Chof

Steven A. Boyer MONTANA

I certify that this Corner Record correctly represents work performed by me or under my direction in compliance with the "Corner Recordation Act" (70-23-101, et seq., M.C.A.).

Signature of Surveyor & Seal

Date: 12/8/2005 Reg. No. 9750LS

Employer: U. S. Forest Service

Office of Clerk and Recorder, County of Lincoln This "corner

record" was filed for rec 192557 BOOK: CCR CC&R'S PAGE: 10911 Pages: 2

was noted on the cross STATE OF MONTANA LINCOLN COUNTY

book No. RECORDED: 03/16/2006 10:32 KOI: CC&R'S

CORAL M. CUMMINGS CLERK AND RECORDER

FEE: \$0.00

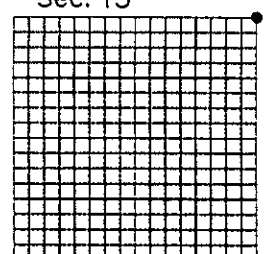
BY: [Signature]

TO: FILED

Cross Index No. J-25 T. 33N. R. 26W. P.M., MT

Adopted July 1, 1981, Montana Board of Professional Engineers & Land Surveyors

Sec. 13



• corner this sheet

CERTIFIED CORNER RECORDATION

Corner S12 S13 S18 T 33 N. R. 26 W. P.M.M. LINCOLN County

1961 BLM Remonumentation of Certain Corners along the Horse Plains Guide Meridian, by William E. Stephens and David R. Cuninghame: The cor. of secs. 12 and 13 only, monumented with a limestone, 4x5x20 ins., firmly set in the ground and mkd. with 4 notches on the S. and 2 notches on the N.. From which the original bearing trees:

A fir, 8 ins. diam., bears S15 1/2°W, 11 lks. dist., mkd. T33N R26W S13 BT.

(Record: S50 1/2°W, 11 lks. dist.)

A fir, 8 ins. diam., bears N44 1/2°W, 19 lks. dist., mkd. T33N R26W S12 BT. (Record)

At the corner point, set an iron post, 30 ins. long, 2 1/2 ins. diam., 26 ins. in the ground in concrete, with brass cap mkd.

from which:

A fir, 8 ins. diam., bears N36°W, 36 lks. dist., mkd. T33N R26W S12 BT.

Bury the original stone alongside the iron post. Collar of stone around the iron post.

1984 Certified Corner Recordation by Alvah F. Hughes, Reg. No. 7322LS: I found a BLM brass cap, flush with the ground, with a collar of stone around the iron post, from which:

A fir, 9 ins. diam., bears S17°W, 7.9 ft. dist., scribing visible.

A fir, 8 ins. diam., bears N43°W, 12.8 ft. dist., scribing visible.

A fir, 8 ins. diam., bears N36°W, 23.3 ft. dist., scribing visible.

Found a 4x4 in. wooden post next to the iron post.

Set a 6 ft. galvanized steel post, with a Survey Marker Decal attached, 2 ft. south of the iron post. Painted red bands around the bearing trees and attached attention signs.

II. Found: A 3 1/4 in. diam. BLM brass cap flush with a collar of stone, marked as shown above, from which

A fir, 10 ins. diam., bears S17°W, 7.9 ft. dist., with N R26W visible.

A fir, 9 ins. diam., bears N48°W, 13.2 ft. dist., mkd. with a pitched face.

A fir, 10 ins. diam., bears N40°W, 23.4 ft. dist., mkd. with a healed face.

III. Painted red the scribed faces and attached Land Survey Monument and Bearing Tree signs. Painted a 6 in. red band around the bearing trees.

Date of Fieldwork: 9/19/2005

Survey crew: Tom Hommel

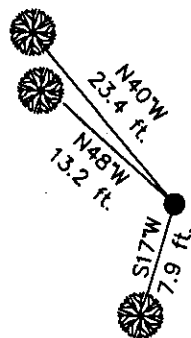
Magnetic declination: 20° East assumed

Equipment used: Hand compass and loggers tape

U.S. Forest Service, Supervisors Office, 1101 Hwy. 2 West, Libby, MT 59923 (406) 293-6211

Page 2 of 2

SKETCH OF CORNER



NOT TO SCALE

CERTIFICATION

I, Thomas M. Hommel 10800LS
certify the information shown herein is true and correct.

Signature Ground Party Chief

Steven A. Boyer MONTANA
I certify that this Corner Record correctly represents work performed by me or under my direction in compliance with the "Corner Recordation Act," 2-670-22-101, et seq., M.C.A.

Signature of Surveyor & Seal

Date: 12/8/2005 Reg. No. 9750LS

Employer: U. S. Forest Service

Office of Clerk and Recorder, County of Lincoln This "corner

record" was filed for record on _____

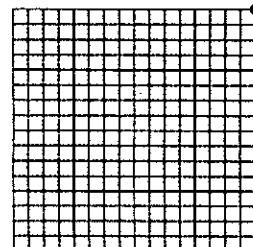
was noted on the cross-index plat and is assigned page No. 10911, in book No. _____

County Official

Cross Index No. J-25 T. 33N. R. 26W. P.M., MT

Adopted July 1, 1981, Montana Board of Professional Engineers & Land Surveyors

Sec. 13



• corner this sheet