

# CERTIFIED CORNER RECORDATION

Corner E 1/4 S13 T 33 N. R. 26 W. P.M.M. LINCOLN County

I. Record: 1893 GLO Survey of the Horse Plains Guide Meridian by Peter M. Cardell and Abram L. Jaqueth: Set a limestone, 18x10x5 ins., 12 ins. in the ground, for 1/4 sec. cor. mkd. 1/4 on W face; from which:

A fir, 7 ins. diam., bears N38°E, 7 lks. dist., mkd. 1/4 S BT.

A fir, 7 ins. diam., bears S27°30'W, 11 lks. dist., mkd. 1/4 S BT.

1903 GLO Retracement and Resurvey of the Horse Plains Guide Meridian by Abraham L. Rinearson and Gordon C. Smith: Set a limestone, 18x12x5 ins., 12 ins. in the ground, for 1/4 sec. cor. mkd. 1/4 on W face; from which:

A fir, 8 ins. diam., bears N54°E, 12 lks. dist., mkd. 1/4 S18 BT.

A fir, 6 ins. diam., bears S53°W, 15 lks. dist., mkd. 1/4 S13 BT.

The old corner, which is a stone, marked and witnessed as described by the Surveyor General, I destroy.

1934 GLO Retracement and Resurvey of the Horse Plains Guide Meridian by Philip L. Inch and Roy Romberg: At 31.36 chains, the 1/4 sec. cor. of secs. 13 and 18, which is a sandstone, 10x6x4 ins. above the ground, marked and witnessed as described in the official record, with the exception that both bearing trees are dead and fallen. This 1/4 ssec. cor. will hereafter refer to sec. 13 only. Established bearing trees:

A tamarack, 8 ins. diam., bears S24 1/4°W, 44 lks. dist., mkd. 1/4 S13 BT.

A tamarack, 16 ins. diam., bears N50 1/2°W, 92 lks. dist., mkd. 1/4 S13 BT.

1961 BLM Remonumentation of Certain Corners along the Horse Plains Guide Meridian, by William E. Stephens and David R. Cunningham: The 1/4 sec. cor. of sec. 13 only, monumented with a unmarked sandstone, 8x10x14 ins., loosely set in the ground. From which the original bearing trees:

A larch, 14 ins. diam., bears S84 1/2°W, 44 lks. dist., mkd. 1/4 S13 BT.

(Record: S24 1/4°W, 44 lks. dist.)

A larch, 16 ins. diam., bears N7°W, 92 lks. dist., mkd. 1/4 S13 BT.

(Record: N50 1/2°W, 92 lks. dist.)

At the corner point, set an iron post, 30 ins. long, 2 1/2 ins. diam., 26 ins. in the ground in concrete, with brass cap mkd.

from which:

A larch, 6 ins. diam., bears S24 1/2°W, 58 lks. dist., mkd. 1/4 S13 BT.

A larch, 4 ins. diam., bears N38°W, 26 lks. dist., mkd. 1/4 S13 BT.

Bury the original stone alongside the iron post. Set a wooden post, 4 ft. long, 4 ins. diam., in the ground alongside the iron post. Raise a mound of stone, 2 ft. base, 1 1/2 ft. high, W. of the iron post.

Date of Fieldwork: 9/19/2005

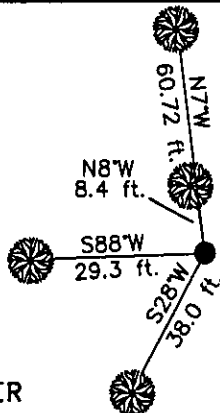
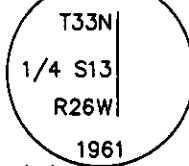
Survey crew: Tom Hommel

Magnetic declination: 20° East assumed

Equipment used: Hand compass and loggers tape

U.S. Forest Service, Supervisors Office, 1101 Hwy. 2 West, Libby, MT 59923 (406) 293-6211

Pg. 1 of 2



SKETCH OF CORNER

NOT TO SCALE

## CERTIFICATION

I, Thomas M. Hommel 10800LS  
certify the information shown herein is true and correct.

Signature Ground Party Chief

Steven A. Boyer

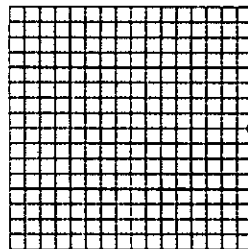
I, Steven A. Boyer  
certify that this Corner Record correctly represents work performed by me or under my direction in compliance with the "Corner Recordation Act" (70-225-101, et seq., M.C.A.)

Signature of Surveyor & Seal

Date: 12/9/2005 Reg. No. 9750LS

Employer: U. S. Forest Service

Sec. 13



• corner this sheet

Office of Clerk and Recorder, County of Lincoln This "corner

record" was filed for recor 192556 BOOK: CCR CC&R'S PAGE: 10910 Pages: 2

was noted on the cross-i STATE OF MONTANA LINCOLN COUNTY

book No. RECORDED: 03/16/2006 10:31 KOI: CC&R'S

CORAL M. CUMMINGS CLERK AND RECORDER

FEE: \$0.00

BY: Thomas M. Hommel

TO: FILED

Cross Index No. L-25 T. 33N. R. 26W. P.M., MT

Adopted July 1, 1981, Montana Board of Professional Engineers & Land Surveyors

# CERTIFIED CORNER RECORDATION

Corner E 1/4 S13 T. 33 N. R. 26 W. P.M.M. LINCOLN County

1984 Certified Corner Recordation by Alvah F. Hughes, Reg. No. 7322 LS: I found a 3 1/4 in. diam. brass cap, 6 ins. above the ground with a collar of stone, from which:

- A dead larch, 4 ins. diam., bears N48°E, 16.8 ft. dist., scribing visible.
- A larch, 10 ins. diam., bears S28°W, 38.0 ft.. dist., healed face.
- A dead larch, 16 ins. diam., bears S88°W, 29.3 ft.. dist., scribing partially visible.

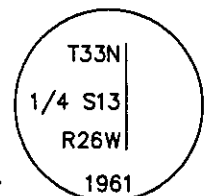
A wooden post, 4 ins. diam., bears South, 0.4 ft. from the brass cap.

Set a 6 ft. carsonite post, 2 ft. in the ground, 2 ft. south of the brass cap, with a Survey Marker Decal attached. Painted red bands around the bearing trees and attached attention signs. Scribed one new beareing tree:

A fir, 8 ins. diam., bears N8°W, 8.4 ft., scribed 1/4 S13 BT.

- II. Found a 2 1/2 in. diam. iron pipe, with a 3 1/4 in. diam. brass cap marked as shown, 6 ins. above the ground with a collar of stone, from which:

- A larch, 12 ins. diam., bears S28°W, 38.0 ft.. dist., healed face.
- A larch, 19 ins. diam., bears S88°W, 29.3 ft.. dist., 1/4 visible.
- (Record: dead larch)
- A larch, 20 ins. diam., bears N7°W, 60.72 ft.. dist., with visible marks.
- A wooden post, 4 ins. diam., bears South, 0.4 ft. from the brass cap.
- A 6 ft. carsonite post, 2 ft. in the ground, 2 ft. south of the brass cap, with a Survey Marker Decal attached.



- III. Attached Bearing Tree and Land Survey Monument signs to the bearing trees. Painted red the scribed face and a red band around the bearing tree.

Date of Fieldwork: 9/19/2005

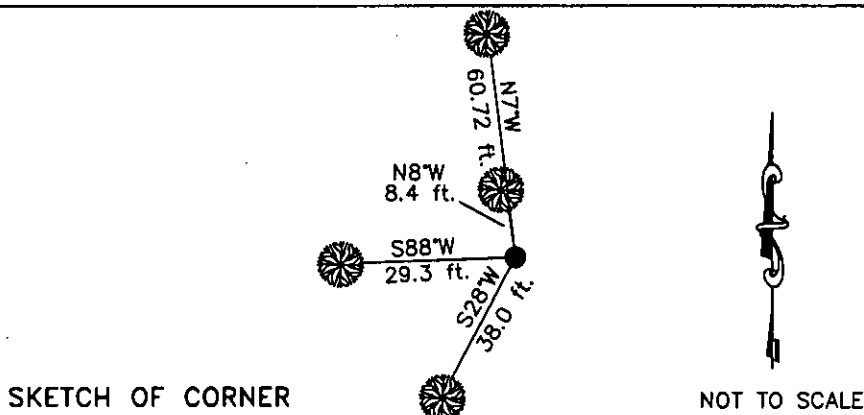
Survey crew: Tom Hommel

Magnetic declination: 20° East assumed

Equipment used: Hand compass and loggers tape

U.S. Forest Service, Supervisors Office, 1101 Hwy. 2 West, Libby, MT 59923 (406) 293-6211

Pg. 2 of 2



CERTIFICATION

I, Thomas M. Hommel 10800LS  
certify the information shown herein is true and correct.

Signature Ground Party Chief: [Signature]

I, Steven A. Boyer 10800LS  
certify that this Corner Record correctly represents work performed by me or under my direction in compliance with the "Corner Recordation Act" (20-22-101, et seq., M.C.A.)

Signature of Surveyor & Seal: [Signature]

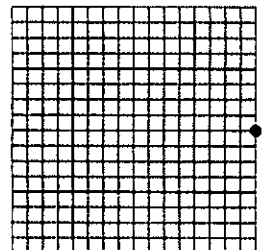
Date: 12/9/2005 Reg. No. 99750LS

Employer: U. S. Forest Service

Office of Clerk and Recorder, County of Lincoln. This "corner record" was filed for record on \_\_\_\_\_ was noted on the cross-index plat and is assigned page No. 10910, in book No. \_\_\_\_\_

County Official

Sec. 13



• corner this sheet

Cross Index No. L-25 T. 33N. R. 26W. P.M., MT

Adopted July 1, 1981, Montana Board of Professional Engineers & Land Surveyors