

# CERTIFIED CORNER RECORDATION

Corner S13  
S18 S19 T. 33 N. R. 26 W. P.M.M. LINCOLN County

I. Record: 1893 GLO Survey of the Horse Plains Guide Meridian by Peter M. Cardell and Abram L. Jaqueth: 80.00 chs. Set a post, 4 ft. long, 4 ins. square, 24 ins. in the ground, for Cor. to Secs. 13, 18, 19 and 24 marked T33N S18 on NE., R25W S19 on SE., R26W S24 on SW. and S13 on NW. faces, from which:

- A fir, 8 ins. diam., bears N78°E, 14 lks. dist., marked T33N R25W S18 BT.
- A tamarack, 10 ins. diam., bears S36°E, 32 lks. dist., marked T33N R25W S19 BT.
- A tamarack, 28 ins. diam., bears S26°W, 10 lks. dist., marked T33N R26W S24 BT.
- A black pine, 8 ins. diam., bears N66°30'W, 39 lks. dist., marked T33N R26W S13 BT.

1903 GLO Retracement and Resurvey of the Horse Plains Guide Meridian by Abraham L. Rinearson and Gordon C. Smith: 80.00 chains. Set a fir post, 3 ft. long, 4 ins. square, 24 ins. in the ground, for cor. of secs. 13, 18, 19 and 24 marked T33N S18 on NE., R25W S19 on SE., S24 on SW. and R26W S13 on NW. face; with 3 notches on N. and S. edges; from which:

- A pine, 9 ins. diam., bears N54°E, 51 lks. dist., marked T33N R25W S18 BT.
- A pine, 8 ins. diam., bears S85°E, 29 lks. dist., marked T33N R25W S19 BT.
- A pine, 7 ins. diam., bears S48°W, 38 lks. dist., marked T33N R26W S24 BT.
- A pine, 10 ins. diam., bears N54 1/2°W, 14 lks. dist., marked T33N R26W S13 BT.

The old corner, which is a post, marked and witnessed as described by the Surveyor General, I destroy it.

1934 GLO Retracement and Resurvey of the Horse Plains Guide Meridian by Philip L. Inch and Roy Romberg: 71.52 chains. The cor. of secs. 13, 18, 19, and 24 which is a pine post 4 ins. sq., 24 ins. above the ground, marked and witnessed as described in the official record, with the exception the all bearing trees are dead and fallen. This cor. will hereafter refer to secs. 13 and 24 only. Establish bearing tees:

- A fir, 8 ins. diam., bears S17°W, 44 lks. dist., mkd. T33N R26W S24 BT.
- A fir, 14 ins. diam., bears N37°W, 28 lks. dist., mkd. T33N R26W S13 BT.

Date of Fieldwork: 9/19/2005

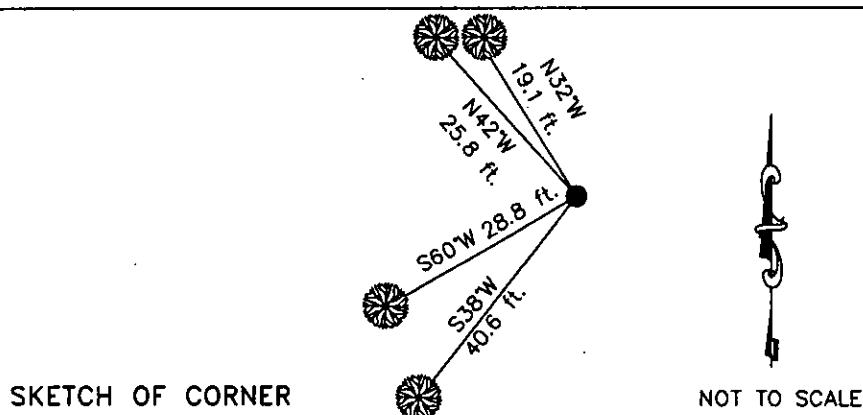
Survey crew: Tom Hommel

Magnetic declination: 20° East assumed

Equipment used: Hand compass and loggers tape

U.S. Forest Service, Supervisors Office, 1101 Hwy. 2 West, Libby, MT 59923 (406) 293-6211

Page 1 of 2



CERTIFICATION

I, Thomas M. Hommel 10800LS  
certify the information shown herein is true and correct.

Signature Ground Party Chief

I, Steven A. Boyer  
certify that this Corner Record correctly represents work performed by me or under my direction in compliance with the "Corner Recordation Act" (20-22-105, 1st Ed. Reg., M.C.A.)

Signature of Surveyor & Seal TOOLS

Date: 12/12/2005 Reg. No. 9750 REGISTERED

Employer: U. S. Forest Service SURVEYOR

Office of Clerk and Recorder, County of Lincoln This "corner

record" was filed for reco 192555 BOOK: CCR CC&R'S PAGE: 10909 Pages: 2

was noted on the cross- STATE OF MONTANA LINCOLN COUNTY

book No. RECORDED: 03/16/2006 10:30 KOI: CC&R'S

CORAL M. CUMMINGS CLERK AND RECORDER

FEE: \$0.00

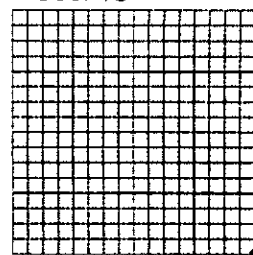
BY: Francis Dennis

TO: FILED

Cross Index No. N-25 T. 33N. R. 26W. P.M., MT

Adopted July 1, 1981, Montana Board of Professional Engineers & Land Surveyors

Sec. 13



• corner this sheet

# CERTIFIED CORNER RECORDATION

Corner S13  
S18 | S19 T 33 N. R. 26 W. P.M.M. LINCOLN County

1961 BLM Remonumentation of Certain Corners along the Horse Plains Guide Meridian, by William E. Stephens and David R. Cuninghame: The cor. of secs. 13 and 24 only, determined from the remains of the original wooden post corner.

From which the original bearing trees:

- A fir, 14 ins. diam., bears S65°W, 44 lks. dist., mkd. T33N R26W S24 BT.  
(Record: S17°W, 44 lks. dist.)
- A larch, 16 ins. diam., bears N26°W, 29 lks. dist., mkd. T33N R26W S18 BT.  
(Record: fir, N37°W, 28 lks. dist.)

At the corner point

Set an iron post, 30 ins. long, 2 1/2 ins. diam., 26 ins. in the ground in concrete, with brass cap marked:

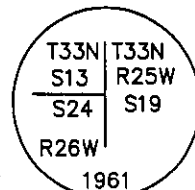
from which:

- A fir, 8 ins. diam., bears S38°W, 62 lks. dist., mkd. T33N R26W S24 BT.
- A fir, 10 ins. diam., bears N36°W, 39 lks. dist., mkd. T33N R26W S13 BT.

Set a wooden post, 5 ft. long, 5 ins. diam., 5 ins. in the ground alongside the iron post.

II. Found: A 2 1/2 in. diam. iron pipe, with a 3 1/4 in. diam. BLM brass cap, 3 ins. above ground, marked as shown below, from which:

- A fir, 17 ins. diam., bears S38°W, 40.6 ft. dist., with a healed face.
- A fir, 17 ins. diam., bears S60°W, 28.8 ft. dist., with a healed face.
- A fir, 15 ins. diam., bears N42°W, 25.8 ft. dist., with a healed face.
- A larch, 20 ins. diam., bears N32°W, 19.1 ft. dist., with 26 13 visible.



III. Painted red the scribed faces and attached Land Survey Monument and Bearing Tree signs. Painted a 6 in. red band around the bearing trees.

Date of Fieldwork: 9/19/2005

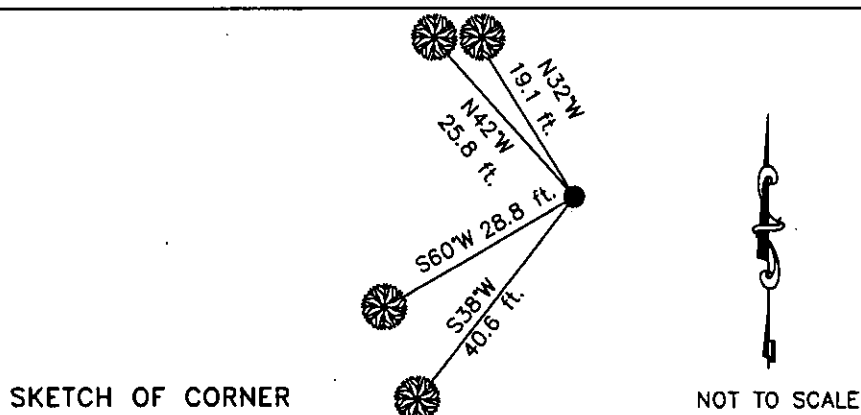
Survey crew: Tom Hommel

Magnetic declination: 20° East assumed

Equipment used: Hand compass and loggers tape

U.S. Forest Service, Supervisors Office, 1101 Hwy. 2 West, Libby, MT 59923 (406) 293-6211

Page 2 of 2



SKETCH OF CORNER

NOT TO SCALE

CERTIFICATION

I, Thomas M. Hommel 10800LS  
certify the information shown herein is true and correct.

Signature Ground Party Chief

Steven A. Boyer 10800LS  
I, Steven A. Boyer certify that this Corner Record correctly represents work performed by me or under my direction in compliance with the "Corner Recordation Act" (50-22-101, et seq., M.C.A.)

Signature of Surveyor & Seal: STEVEN A. BOYER  
9750LS

Date: 12/12/2005 Reg. No. 9750LS

Employer: U. S. Forest Service

Office of Clerk and Recorder, County of Lincoln This "corner

record" was filed for record on \_\_\_\_\_

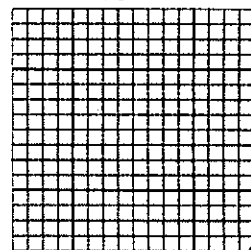
was noted on the cross-index plat and is assigned page No. 10909 in book No. \_\_\_\_\_

County Official

Cross Index No. N-25 T. 33N. R. 26W. P.M., MT

Adopted July 1, 1981, Montana Board of Professional Engineers & Land Surveyors

Sec. 13



• corner this sheet