

CERTIFIED CORNER RECORDATION

CORNER C-E 1/16 S 24 T. 33 N., R. 26 W., P.M.M. LINCOLN COUNTY

RECORD:
NONE

FOUND EVIDENCE:
NONE

PERPETUATION:

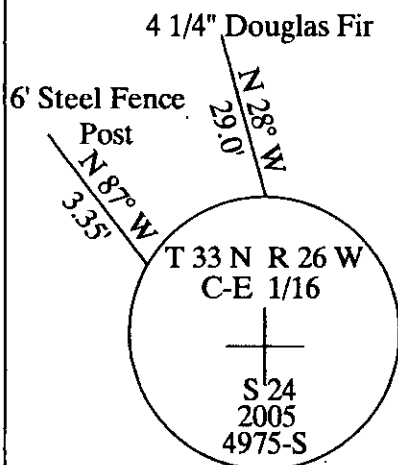
Set a 3 1/4 inch aluminum cap stamped (see diagram below) on a 5/8 inch dia. rebar 30 inches long.
From which

A 4 1/4 inch DBH Douglas Fir scribed X BT bears N 28° W 29.0 ft. dist.

A 6 foot long steel fence post bears N 87° W 3.35 ft. dist.

Painted 6 inch wide bands and attached bearing tree signs to trees.

MAGNETIC DECLINATION: 18° E



CERTIFICATION

I, GEORGE CLARK

Certify the information shown herein is true and correct

Signature of Ground Party Chief

I, KENNETH DAVIS

4975-S
certify that this Corner Record correctly represents work
performed by me or under my direction in compliance with the

"Corner Recording Act"

(70-2-101, et seq., M.C.A.)

Signature of Surveyor & Seal

Date: 10/25/05 No. 4975-S

Employer: DAVIS Surveying, Inc

SKETCH OF CORNER

SECTION

Office of Clerk and Recorder, County of _____

This "corner record" was filed for record on _____

189391 BOOK: CCR CC&R'S PAGE: 10866 Pages: 1

was noted on 1 STATE OF MONTANA LINCOLN COUNTY

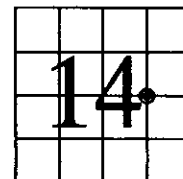
No. _____ RECORDED: 11/04/2005 12:53 KOI: CC&R'S

In book No. _____ CORAL M. CUMMINGS CLERK AND RECORDER

FEE: \$0.00

BY: George Clark

TO: DAVIS SURVEYING, INC.



Sec
24

Cross Index No. C-E 1/16 S 24 T. 33 N. R. 26 W. P.M.M.

THIS CORNER