

CERTIFIED CORNER RECORDATION

CORNER S-E 1/16 S 24 T. 33 N., R. 26 W., P.M.M. LINCOLN COUNTY

RECORD:
NONE

FOUND EVIDENCE:
NONE

PERPETUATION:

Set a 3 1/4 inch aluminum cap stamped (see diagram below) on a 5/8 inch dia. rebar 30 inches long.
From which

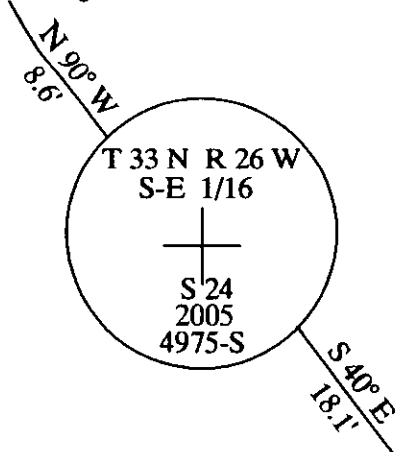
A 8 3/4 inch DBH Douglas Fir scribed X BT bears N 90° W 8.6 ft. dist.

A 9 1/2 inch DBH Lodgepole Pine scribed S-E 1/16 S24 BT bears S 40° E 18.1 ft. dist.

Painted 6 inch wide bands and attached bearing tree signs to trees.

MAGNETIC DECLINATION: 18° E

8.75" Douglas Fir



9.5" Lodgepole Pine

CERTIFICATION

I, GEORGE CLARK

Certify the information shown herein is true and correct

Signature of Ground Party Chief

I, KENNETH DAVIS

certify that this Corner Record correctly represents work performed by me or under my direction in compliance with the "Corner Recordation" act.

(7022-01, 1984, S.M.C.A.)

Signature of Surveyor Seal

Date: 11/04/2005 No. 4975-S

Employer: DAVIS Surveying Inc

SKETCH OF CORNER

SECTION

Office of Clerk and Recorder, County of _____

This "corner" 189389 BOOK: CCR CC&R'S PAGE: 10864 Pages: 1

was noted (STATE OF MONTANA LINCOLN COUNTY

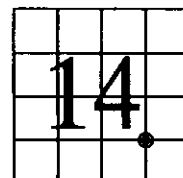
No. _____ RECORDED: 11/04/2005 12:50 KOI: CC&R'S

In book No CORAL M. CUMMINGS CLERK AND RECORDER

FEE: \$0.00

BY: George Clark

TO: DAVIS SURVEYING, INC.



Sec
24

THIS CORNER

Cross Index No. S-E 1/16 S 24 T. 33 N., R. 26 W., P.M.M.