

1. Original and/or subseq
2. Description of evidence
3. Description of monum
4. Sketch of corner, show
5. Certification must be si
6. Fill in Cross Index & S

INSTRUCTIONS
179989 BOOK: CCR CC&R'S PAGE: 10670 Pages: 1
STATE OF MONTANA LINCOLN COUNTY
RECORDED: 10/18/2004 9:07 KOI: CC&R'S
CORAL M. CUMMINGS CLERK AND RECORDER
FEE: \$0.00
TO: FILED
BY: *Jeannie Derris* Deputy

Q:CO-STD/152
Created 4/8/92

omers.
ty ties, position of accessories,

CERTIFIED CORNER RECORDATION

Corner Northeast (NE) 1/16 Sec. 3 T. 33 North R. 26 West P.M.M. LINCOLN County

RECORD:

None Previous.

7/2004

At the point for the NE 1/16 corner as determined by standard survey methods, set 5/8"x30" rebar, 28" in the ground, with 3-1/4" U.S.D.A. aluminum cap.

Place 6' tall galvanized posts with "Property Boundary" and "Survey Monument" 3' N. and W. of the corner.

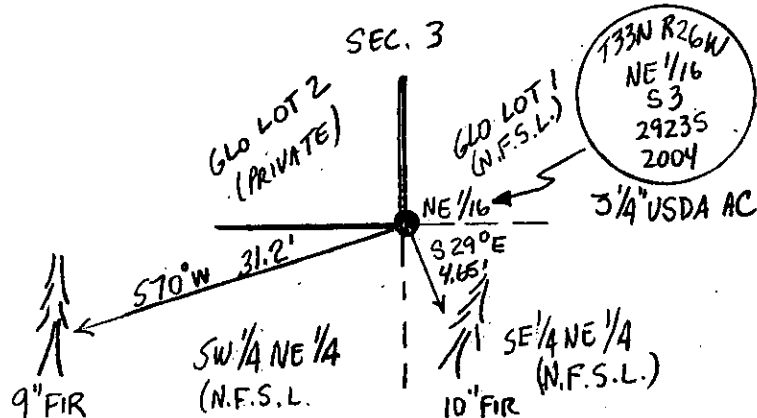
From which:

A 9" Fir, bears S.70°W., 31.2', marked: "X" BT.

A 10" Fir, bears S.29°E., 4.65', marked: NE 1/16 S3 BT.

Paint blazes and 6" band and posted "Bearing Tree" and "Land Survey Monument" on bearing trees.

See Certificate of Survey on file at the Lincoln County Courthouse.



SKETCH OF CORNER

CERTIFICATION

I, Jason Culp
certify the information shown herein is true and correct.

Jason Culp
Signature Ground Party Chief

I, Richard A. Ainsworth
certify that this Corner Record correctly represents work performed by me or under my direction in compliance with the "Corner Recordation Act" (10-22-10 Act seq. M.C.A.)

Richard A. Ainsworth
Signature of Surveyor & Seal

Date: 7/2004

Employer: Professional Consultants, Inc.

Office of Clerk and Recorder, County of LINCOLN. This "corner record" was filed for record on 10-18-04 was noted on the cross-index plat and is assigned page No. 579989, in book No. 10670

Jeannie Derris
County Official

Sec.3

