

1. Original and/or subsequent
2. Description of evidence
3. Description of monument
4. Sketch of corner, show a
5. Certification must be sig
6. Fill in Cross Index & Se

INSTRUCTIONS  
179988 BOOK: CCR CC&R'S PAGE: 10669 Pages: 1  
STATE OF MONTANA LINCOLN COUNTY  
RECORDED: 10/18/2004 9:06 KOI: CC&R'S  
CORAL M. CUMMINGS CLERK AND RECORDER  
FEE: \$0.00 BY: *Flannia Dennis*  
TO: FILED

Q:CO-STD/152  
Created 4/8/92  
mers.

/ ties, position of accessories,

## CERTIFIED CORNER RECORDATION

Corner Center-North (CN) 1/16 Sec. 3 T. 33 North R. 26 West P.M.M. LINCOLN County

### RECORD:

None Previous.

7/2004

At the point for the CN 1/16 corner as determined by standard survey methods, set 5/8"x30" rebar, 20" in the ground, with 3-1/4" U.S.D.A. aluminum cap. Raise a 30" diameter, 10" high collar of stone around the monument.

Place 6' tall galvanized posts with "Property Boundary" and "Survey Monument" 3' S. and E. of the corner.

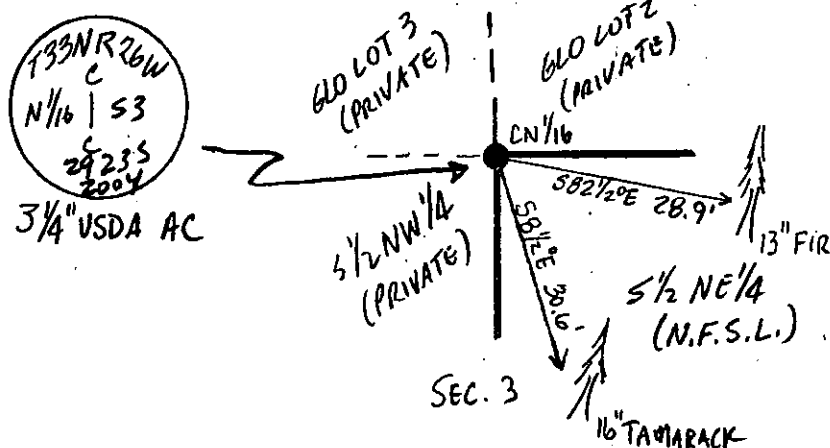
From which:

A 16" Tamarack, bears S.8 1/2°E., 30.6', marked: CN 1/16 S3 BT.

A 13" Fir, bears S.82 1/2°E., 28.9', marked: CN 1/16 S3 BT.

Paint blazes and 6" band and posted "Bearing Tree" and "Land Survey Monument" on bearing trees.

See Certificate of Survey on file at the Lincoln County Courthouse.



SKETCH OF CORNER

### CERTIFICATION

I, Jason Culp  
certify the information shown herein is true and correct.

*Jason Culp*  
Signature Ground Party Chief

I, Richard A. Ainsworth  
certify that this Corner Record correctly represents work performed by me or under my direction in compliance with the Corner Recordation Act (70-22-101 et seq., M.C.A.)

*Richard A. Ainsworth*  
Signature of Surveyor & Seal

Date: 7/2004 Reg. No. 29238

Employer: Professional Consultants, Inc.

Office of Clerk and Recorder, County of LINCOLN. This "corner record" was filed for record on 10-18-04.

was noted on the cross-index plat and is assigned page No. 179988, in

book No. 10669

page

*Flannia Dennis*  
County Official

Sec.3

