

INSTRUCTIONS

Q:CO-STD/152
Created 4/8/92

1. Original and/
2. Description of
3. Description of
4. Sketch of corr
5. Certification
6. Fill in Cross I

179987 BOOK: CCR CC&R'S PAGE: 10668 Pages: 1

STATE OF MONTANA LINCOLN COUNTY

RECORDED: 10/18/2004 9:05 KOI: CC&R'S

CORAL M. CUMMINGS CLERK AND RECORDER

FEE: \$0.00

BY:

TO: FILED

iterated corners.

topography ties, position of accessories,

CERTIFIED CORNER RECORDATION

Corner E 1/16 Secs. 3 & 10 T. 33 North R. 26 West P.M.M. LINCOLN County

RECORD:

1982 C.O.S. 1032 (Smith, 4740-S). Set 2-1/2" brass tablet in boulder in the surface of a logging road.
From which:

A 10" Fir, bears N.44°W., 29.95', marked: E1/16 S3 BT.

A 9" Fir, bears S.74°W., 17.70', marked: E1/16 S10 BT.

7/2004 Could find no evidence of record brass tablet set by (Smith, 4740-S) in logging road. There's evidence of significant improvements to this access/logging road. At the point for the E 1/16 corner as determined by standard survey methods, which falls in W. edge of a dirt/grass access road, I set 5/8"x30" rebar, with 3-1/4" U.S.D.A. aluminum cap 6" below the road surface. This corner position is in agreement with the record bearing trees.

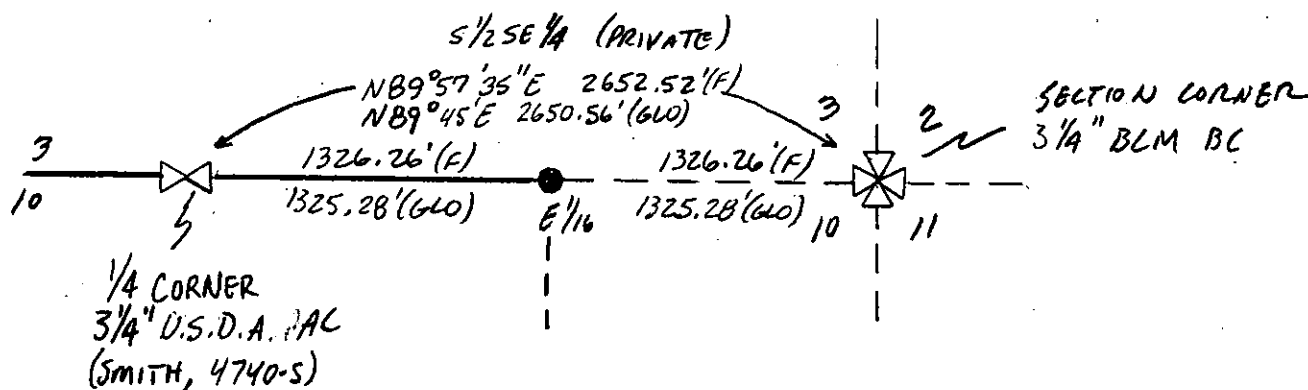
From which the record bearing trees:

A 12" Fir, bears N.44°W., 29.95', with a healed blaze.

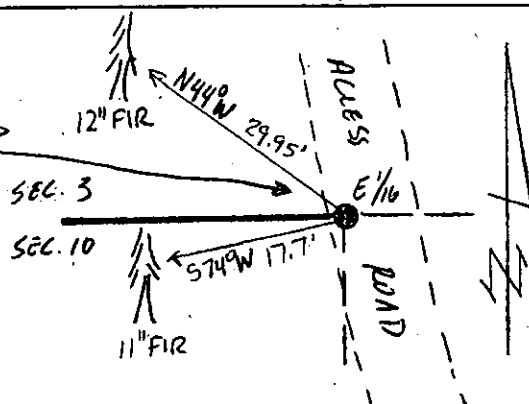
A 11" Fir, bears S.74°W., 17.70', with a healed blaze.

Repaint blazes and 6" band on the existing bearing trees.

See Certificate of Survey on file at the Lincoln County Courthouse.



133N R26W
E 1/16 S3
S10
2923 S
2004
3 1/4" USDA AC



SKETCH OF CORNER

CERTIFICATION

I, Jason Culp
certify the information shown herein is true and correct.

Signature Ground Party Chief

I, Richard A. Ainsworth
certify that this Corner Record correctly
represents work performed by me or under my
direction in compliance with the "Corner
Recordation Act" (70-22-101, et seq. M.C.A.)

Richard A. Ainsworth
Signature of Surveyor & Seal
2923 S

Date: 7/2004 Reg. No. 2923 S

Employer: Professional Consultants, Inc.

Office of Clerk and Recorder, County of LINCOLN. This "corner
record" was filed for record on 10-18-04

was noted on the cross-index plat and is assigned page No. 179987, in
book No. 10668

page

County Official

Sec. 3

