

1. Original and/or
2. Description of
3. Description of
4. Sketch of corne
5. Certification m
6. Fill in Cross Inc

INSTRUCTIONS
179986 BOOK: CCR CC&R'S PAGE: 10667 Pages: 1
STATE OF MONTANA LINCOLN COUNTY
RECORDED: 10/18/2004 9:04 KOI: CC&R'S
CORAL M. CUMMINGS CLERK AND RECORDER
FEE: \$0.00
BY: *Jeannie Deane*
TO: FILED

Q:CO-STD/152
Created 4/8/92

erated corners.

pography ties, position of accessories,

CERTIFIED CORNER RECORDATION

Corner Center-South (CS) 1/16 Sec. 3 T. 33 North R. 26 West P.M.M. LINCOLN County

RECORD:

None Previous.

7/2004

At the point for the CS 1/16 corner as determined by standard survey methods, set 5/8"x30" rebar, 26" in the ground, with 3-1/4" U.S.D.A. aluminum cap. Raise a 12" diameter, 4" high collar of stone around the monument.

Place 6' tall galvanized posts with "Property Boundary" decals 1' N. and 6' E. of the corner.

From which:

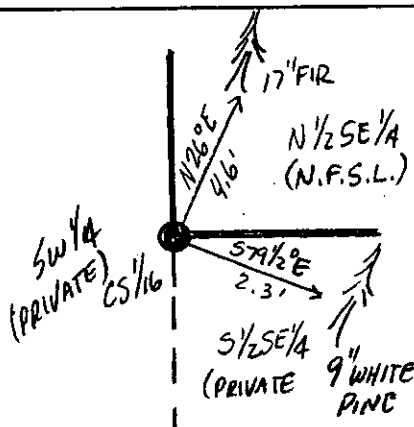
A 9" White Pine, bears S.79 1/2°E., 2.3', marked: S 1/16 S3 BT.

A 17" Fir, bears N.26°E., 4.6', marked: S 1/16 S3 BT.

Paint blazes and 6" band and posted "Bearing Tree" and "Land Survey Monument" on bearing trees.

See Certificate of Survey on file at the Lincoln County Courthouse.

T33N R26W
C
S1/16 S3
C
29235
2004
3 1/4" U.S.D.A. AC



SKETCH OF CORNER

CERTIFICATION

I, Jason Culp
certify the information shown herein is true and correct.

Jason Culp
Signature Ground Party Chief

I, Richard A. Ainsworth
certify that this Corner Record correctly represents work performed by me or under my direction in compliance with the "Corner Recordation Act" (RICHARD, et seq., M.C.A.)

Richard A. Ainsworth
Signature of Surveyor & Seal

Date: 7/2004

Reg. No. 29235

Employer: Professional Consultants, Inc.

Office of Clerk and Recorder, County of LINCOLN. This "corner record" was filed for record on 10-18-04

was noted on the cross-index plat and is assigned page No. 10667 pg. in

book No. 179986

Jeannie Deane
County Official.

Sec.3

