

INSTRUCTIONS

Q:CO-STD/152
Created 4/8/92

1. Original and/or sub
2. Description of evid
3. Description of mon
4. Sketch of corner, sl
5. Certification must l
6. Fill in Cross Index

179983 BOOK: CCR CCR'S PAGE: 10664 Pages: 1
STATE OF MONTANA LINCOLN COUNTY
RECORDED: 10/18/2004 9:01 KOI: CCR'S
CORAL M. CUMMINGS CLERK AND RECORDER
FEE: \$0.00 BY: *Jeannie Ainsworth*
TO: FILED

ed corners.

graphy ties, position of accessories,

CERTIFIED CORNER RECORDATION

Corner E 1/16 Secs. 3 & 34 T. 33 & 34 North R. 26 West P.M.M. LINCOLN County

RECORD:

1982 C.O.S. 1010 (Hill, 5612-S). Set 2-1/2"x30" aluminum pipe, 23" in the ground, collar of stone, and a 3-1/4" U.S.D.A. aluminum cap.

From which:

A 12" Spruce, bears S.26°35'W., 28.3', marked: "X" BT.

A 6" Spruce, bears N.18°25'W., 6.4', marked: E1/16 S34 BT.

7/2004

Found 2-1/2" aluminum pipe with 3-1/4" U.S.D.A. aluminum cap, firmly set, projecting 4" above ground in a collar of stone and record bearing trees as described. We find this position to be in error and do not accept its position.

At the point for the E 1/16 corner as determined by standard survey methods, set 5/8"x30" rebar, 30" in the ground with 3-1/4" U.S.D.A. aluminum cap.

From which the record bearing trees by (Hill, 5612-S):

A 13", 8' tall Spruce stump, bears N.31°W., 24.6', with "X" at breast height and healed blaze.

A 9" Spruce, bears N.3°W., 51.9', with healed blaze.

I remove the bearing tree, attention, and location tags by (Hill, 5612-S) and replace with new tags referencing the new 1/16 corner.

From which a new bearing tree:

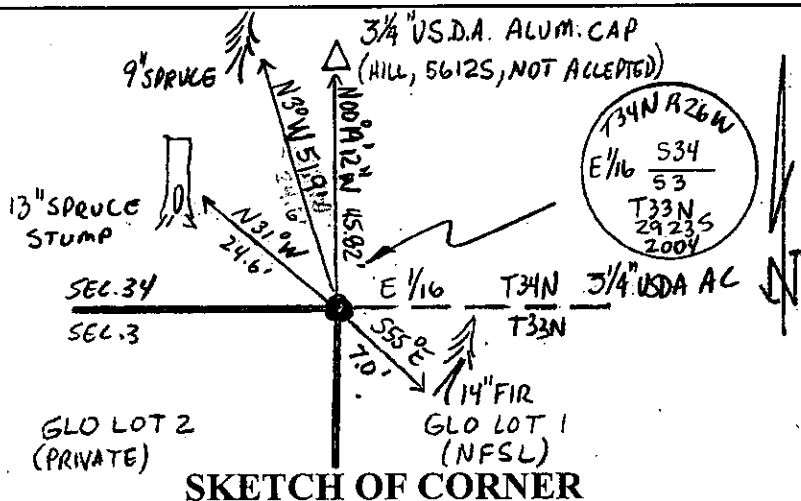
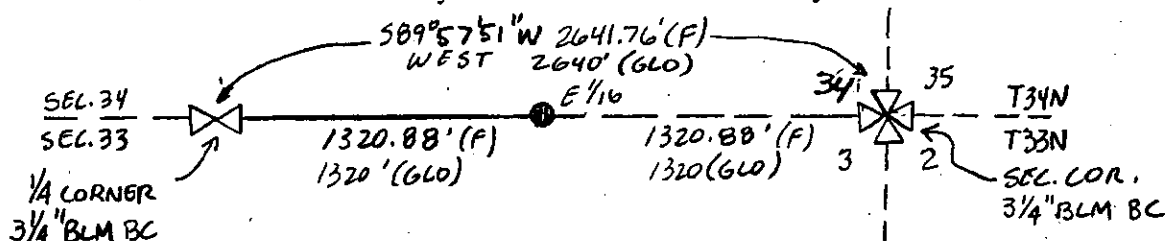
A 14" Fir, bears S.55°E., 7.0', marked: E1/16 S3 BT.

The E1/16 by (Hill, 5612-S) bears N.00°19'12"W., 45.82'.

Paint blazes and 6" band and posted "Bearing Tree" and "Land Survey Monument" on bearing trees.

Place 6' tall galvanized posts with "Property Boundary" and "Survey Monument" 3' S. & W. of the corner.

See Certificate of Survey on file at the Lincoln County Courthouse.



CERTIFICATION

I, Jason Culp
certify the information shown herein is true and correct.

Signature Ground Party Chief

I, Richard A. Ainsworth
certify that this Corner Record correctly represents work performed by me or under my direction in compliance with the "Corner Recordation Act" (70-22-101, et seq., M.C.A.)

Signature of Surveyor & Seal

2923 S

Date: 7/2004

Reg. No. 2923 S

Employer: Professional Consultants, Inc.

SKETCH OF CORNER

Office of Clerk and Recorder, County of LINCOLN. This "corner record" was filed for record on 10-18-04

was noted on the cross-index plat and is assigned page No. 179983, in

book No. 10664

page

Jeannie Ainsworth
County Official

Sec. 34

