

1. Original and/
2. Description o
3. Description o
4. Sketch of con
5. Certification
6. Fill in Cross

INSTRUCTIONS
179982 BOOK: CCR CC&R'S PAGE: 10663 Pages: 1
STATE OF MONTANA LINCOLN COUNTY
RECORDED: 10/18/2004 9:00 KOI: CC&R'S
CORAL M. CUMMINGS CLERK AND RECORDER
FEE: \$0.00
TO: FILED
BY: *Jeannie Dennis*
Deputy

Q:CO-STD/152
Created 4/8/92

Iterated corners.

topography ties, position of accessories,

CERTIFIED CORNER RECORDATION

Corner N 1/16 Secs. 2 & 3 T. 33 North R. 26 West P.M.M. LINCOLN County

RECORD:

1998 C.O.S. 134361 (Sands, 7975-S). Set 3/4"x30" aluminum rod, with a 3-1/4" U.S.D.A. aluminum cap.

From which:

- A 11" Spruce, bears S.04°W., 20.65'.
- A 10" Spruce, bears N.53°W., 32.15'.

7/2004 Found 3/4" aluminum rod with 3-1/4" U.S.D.A. aluminum cap, firmly set, projecting 4" above ground in swampy bottom. We find this position to be in error and do not accept its position. At the true point for the N 1/16 corner as determined by standard survey methods, set two (2) 6' tall galvanized posts (back to back), driven 5-1/2' in the ground, over which we set 2-1/2"x30" aluminum post, 25" in the ground with 3-1/4" U.S.D.A. aluminum cap.

From which the record bearing trees by (Sands, 7975-S):

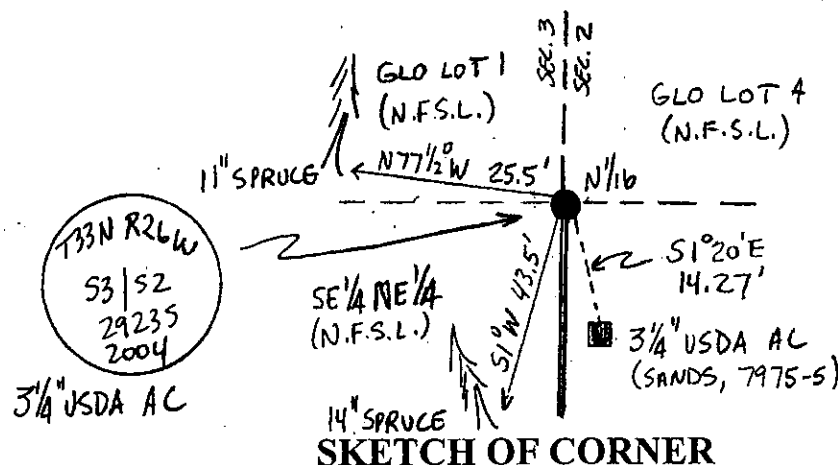
- A 11" Spruce, bears N.77 1/2°W., 25.5', with "N1/16 BT" visible on a partially healed blaze.
- A 14" Spruce, bears S.1°W., 43.5', with "N1/16 BT" visible on a partially healed blaze.

I remove the bearing tree tags by (Sands, 7975-S) and replace with new tags referencing the new 1/16 corner. Place 6' tall galvanized post with "Survey Monument" decal 0.4' E. of the corner.

The N1/16 by (Sands, 7975-S), bears S.1°20'E., 14.27'.

Repaint blazes and 6" band and post new "Bearing Tree" tags on bearing trees.

See Certificate of Survey on file at the Lincoln County Courthouse.



CERTIFICATION

I, Jason Culp
certify the information shown herein is true and correct.

Jason Culp
Signature Ground Party Chief

I, Richard A. Ainsworth
certify that this Corner Record correctly represents work performed by me or under my direction in compliance with the "Corner Recordation Act" (70-22-101, et seq., M.C.A.)

Richard A. Ainsworth
Signature of Surveyor & Seal

Date: 7/2004 2923 S
Reg. No. 2923S

Employer: Professional Consultants, Inc.

Sec.2

Office of Clerk and Recorder, County of LINCOLN. This "corner record" was filed for record on 10-18-04 was noted on the cross-index plat and is assigned Page No. 179982, in book No. 10663 Page 2
Jeannie Dennis
County Official

