

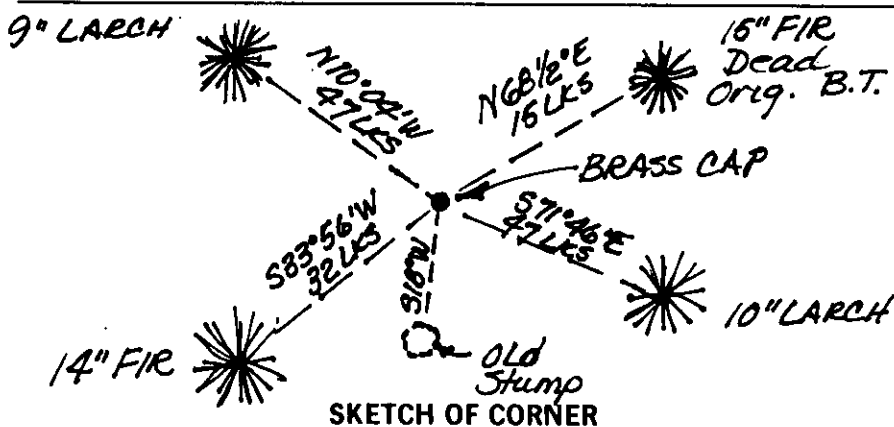
INSTRUCTIONS

1. Original and/or subsequent record used to evaluate the corner position.
2. Description of evidence found, note discrepancies in the record, state method of establishing lost or obliterated corners.
3. Description of monument and accessories set to perpetuate the corner position.
4. Sketch of corner, show all pertinent data which can best be shown in a sketch example, corner marking, topography ties, position of accessories, etc.
5. Certification must be signed and sealed by Land Surveyor registered in the State of Montana.
6. Fill in Cross Index & Section Diagram at bottom of sheet.

CERTIFIED CORNER RECORDATION

Corner SW Cor SEC 2 T. 33N R. 26W P.M.M. LINCOLN County

FOUND 3 1/4" BLM. BRASS CAP
ALUMINUM CAP



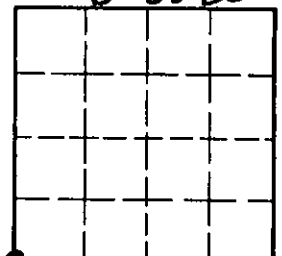
SKETCH OF CORNER

CERTIFICATION

I, _____
certify the information shown herein is true and correct.

Signature Ground Party Chief
1. Thomas E. Sands
certify that this Corner Record correctly represents work performed by me or under my direction in compliance with the Corner Recordation Act, 70-22-101, et seq., M.C.A. 79758
Signature of Surveyor Seal
Date: 8/5/98 Reg. No. 7975-8
Employer: Sands Surveying, Inc.

Office of Clerk and Recorder, County of Lincoln. This "corner record" was filed for record on 8-13-98 was noted on the cross-index plat and is assigned page No. 10153, in book No. _____
Coral M. Cummings County Official

Sec. 2-33-26

• - corner this sheet

Cross Index No. _____ T. _____ R. _____ PMM