

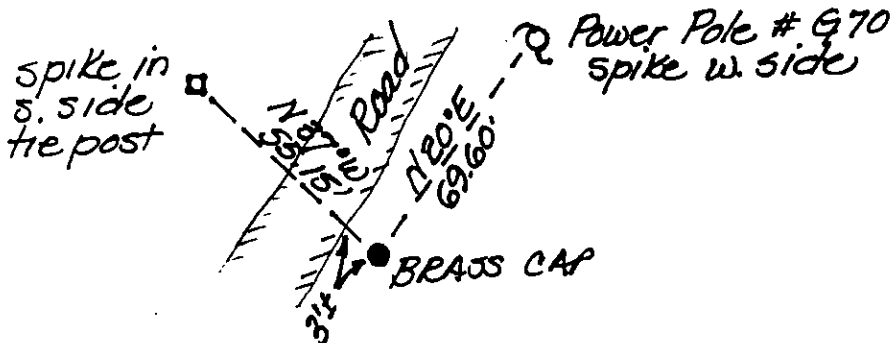
## INSTRUCTIONS

1. Original and/or subsequent record used to evaluate the corner position.
2. Description of evidence found, note discrepancies in the record, state method of establishing lost or obliterated corners.
3. Description of monument and accessories set to perpetuate the corner position.
4. Sketch of corner, show all pertinent data which can best be shown in a sketch example, corner marking, topography ties, position of accessories, etc.
5. Certification must be signed and sealed by Land Surveyor registered in the State of Montana.
6. Fill in Cross Index & Section Diagram at bottom of sheet.

## CERTIFIED CORNER RECORDATION

Corner SE cor SEC 2 T. 33N R. 26W P.M.M. LINCOLN County

FOUND 3 1/4" BLM BRASS CAP



SKETCH OF CORNER

## CERTIFICATION

I, \_\_\_\_\_  
certify the information shown herein is true and correct.

Signature Ground Party Chief

I, Thomas E. Sands

certify that this Corner Record correctly represents work performed by me or under my direction in compliance with the Corner Recordation Act (70-22-101, et seq., M.C.A.).

Signature of Surveyor & Seal

Date: 8/5/98 Reg. No. 7975-S

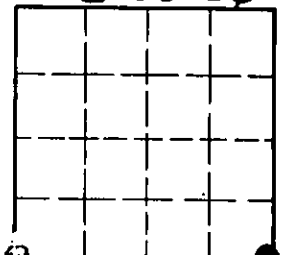
Employer: Sands Surveying, Inc.

Office of Clerk and Recorder, County of LINCOLN. This "corner record" was filed for record on 8-13-98 was noted on the cross-index plat and is assigned page No. 10152, in book No. \_\_\_\_\_

Carol M. Cumming  
County Official

Cross Index No. \_\_\_\_\_ T. \_\_\_\_\_ R. \_\_\_\_\_ PMM

Sec. 2-33-26



• - corner this sheet