

CERTIFIED LAND CORNER RECORDATION
(REFERENCE FSM 7153.53)

DESCRIPTION OF CORNER EVIDENCE FOUND, AND ORIGINAL RECORD (IF KNOWN)

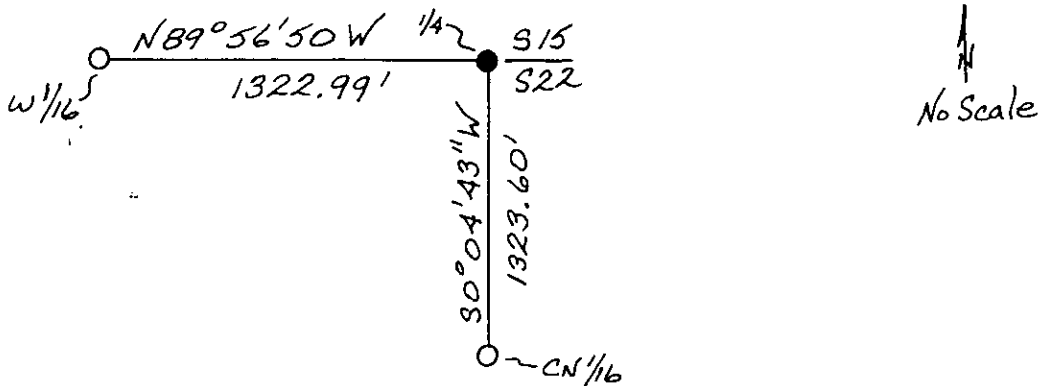
ORIGINAL GLO RECORD: SET A LIMESTONE, 14 X 12 X 4 INS, 9 INS IN THE GROUND, FOR 1/4 SEC. COR., MARKED 1/4 ON N. FACE; FROM WHICH
A TAMARACK, 24 INS DIAM, BEARS S 22 1/2° E., 101 LKS DIST, MRKD 1/4 S22 BT.
A TAMARACK, 22 INS DIAM, BEARS N 12° W., 86 LKS DIST, MRKD 1/4 S15 BT

FOUND: AN ALUMINUM PIPE WITH ALUMINUM CAP STAMPED "2989 ES" SHOWN ON COFS #732 AS A FOUND STONE. A 24" LARCH STUMP BEARS S 22° E, 66.7 FT, SCRIBING VISIBLE ON BROKEN PIECE OF STUMP. (ORIGINAL S22 BT)

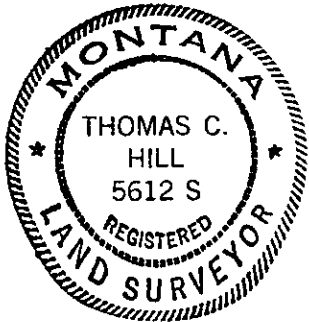
DESCRIPTION OF MONUMENT AND ACCESSORIES ESTABLISHED TO PERPETUATE THE ORIGINAL LOCATION OF THIS CORNER:

THERE WAS NO CORNER RECORDATION ON FILE AS TO THE REMONUMENTATION OF THE FOUND STONE AS SHOWN ON COFS #732
Date of work: OCT 1980

SKETCH, WITH COURSE AND DISTANCE TO ADJACENT CORNERS IF DETERMINED IN THIS SURVEY.
(MAY SKETCH OR PASTE REPRODUCTION ON REVERSE SIDE.)



Surveyor's Seal



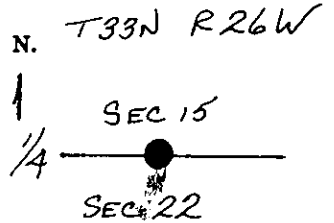
I, ANTHONY J. BACKMAN
certify that the information shown herein is true and correct.

Anthony J. Bachman
Signature of Ground Party Chief

I, THOMAS C. HILL
certify that I have carefully performed or reviewed the work done on the diagrammed corner as reported on this recordation form and approve the same.

Thomas C. Hill
Signature of Surveyor

DIAGRAM OF CORNER:



● = Corner recorded on the sheet

5612 S
Registration Number

Office of Clerk and Recorder, County of Lincoln

This "corner record" was filed for record on the 9th day of February, 1981, was noted on the cross-index plat and is assigned page No. 1009, in book No. 1

William L. Taylor by Betty Bell
County Official deputy

Cross Index No. N-15 T. 33N R. 26W P. 15 Mer.