

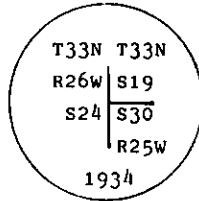
## INSTRUCTIONS

1. Original and/or subsequent record used to evaluate the corner position.
2. Description of evidence found, note discrepancies in the record, state method of establishing lost or obliterated corners.
3. Description of monument and accessories set to perpetuate the corner position.
4. Sketch of corner, show all pertinent data which can best be shown in a sketch example, corner marking, topography ties, position of accessories, etc.
5. Certification must be signed and sealed by Land Surveyor registered in the State of Montana.
6. Fill in Cross Index & Section Diagram at bottom of sheet.

## CERTIFIED CORNER RECORDATION

Corner NW Sec. Cor. of S30 T. 33 N. R. 25 W. P.M.M. Lincoln County

- I. 1934 Resurvey record by Philip L. Inch: "Set an iron post, 3 ft. long, 2 ins. diam., 12 ins. in the ground, to bedrock and in a mound of stone for the cor. of secs. 19 and 30, with brass cap marked



From which:

- A fir, 8 ins. diam., bears N58 1/2° E, 53 lks. (34.98 ft.) dist., mkd. T33N R25W S19 BT.  
A fir, 7 ins. diam., bears S72 1/2° E, 47 lks. (31.02 ft.) dist., mkd. T33N R25W S30 BT.

1961 BLM record: The cor. of secs. 19 and 30 only, monumented with an iron post, 36 ins. long, 2 ins. diam., mkd. as described in the official record, loosely set 12 ins. in the ground.

From which the original bearing tree:

- A fir, 8 ins. diam., bears S73 1/4° E, 48 lks. (31.68 ft.) dist., mkd. T33N R25W S30 BT.  
(Record: S72 1/2° E, 47 lks. (31.02 ft.) dist.)

At the corner point, reset iron post 14 ins. in the ground in concrete. and supported in a mound of stone 3 ft. base to the top. From which:

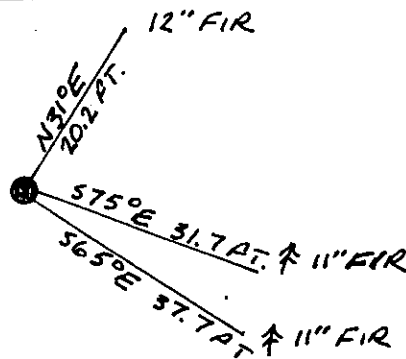
- A fir, 8 ins. diam., bears N25° E, 31 lks. (20.46 ft.) dist., mkd. T33N R25W S19 BT.  
A fir, 8 ins. diam., bears S67 1/2° E, 56 lks. (36.96 ft.) dist., mkd. T33N R25W S30 BT.

- II. Found a 2 ins. diam. iron pipe 18 ins. out of the ground with GLO brass cap mkd. as shown.

From which:

- A fir, 12 ins. diam, bears N31° E, 20.2 ft. dist., healed face.  
A fir, 11 ins. diam., bears S75° E, 31.7 ft. dist., mkd. T33N R25W S30 BT.  
A fir, 11 ins. diam., bears S65° E, 37.7 ft. dist., healed face.

- III. Painted red bands around the bearing trees and attached "Land Survey Monument" and "Bearing Tree" signs.  
Set a galvanized steel guard post with "Land Survey Marker" and Property Boundary: decals, North, 3 ft.  
Magnetic declination: 20° East



SKETCH OF CORNER

CERTIFICATION

RONALD A. PEARSON

9008LS

I, Kevin A. Todd certify the information shown herein is true and correct.

Kevin A. Todd Signature Ground Surveyor

Ronald A. Pearson

I, Ronald A. Pearson certify that this Corner Record correctly represents work performed by me or under my direction in compliance with the "Corner Recordation Act" (70-22-101, et seq., M.C.A.)

Ronald A. Pearson Signature of Surveyor & Seal

12/17/92 9008LS

Date: Reg. No.

Employer: U. S. FOREST SERVICE

Office of Clerk and Recorder, County of Lincoln. This "corner record" was filed for record on 1-4-93 was noted on the cross-index plat and is assigned page No. 5213, in book No. Coral M Cummings by BLS

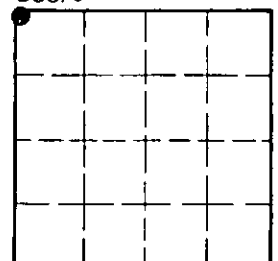
County Official

R-1

33 N 25W

Cross Index No. T. R. PMM

Sec. 30



• - corner this sheet