

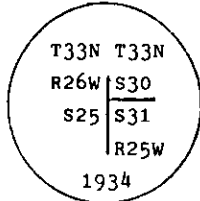
INSTRUCTIONS

1. Original and/or subsequent record used to evaluate the corner position.
2. Description of evidence found, note discrepancies in the record, state method of establishing lost or obliterated corners.
3. Description of monument and accessories set to perpetuate the corner position.
4. Sketch of corner, show all pertinent data which can best be shown in a sketch example, corner marking, topography ties, position of accessories, etc.
5. Certification must be signed and sealed by Land Surveyor registered in the State of Montana.
6. Fill in Cross Index & Section Diagram at bottom of sheet.

CERTIFIED CORNER RECORDATION

Corner SW Sec. Cor. of S30 T. 33 N. R. 25 W. P.M.M. Lincoln County

- I. 1934 Resurvey record by Philip L. Inch: "Set an iron post, 3 ft. long, 2 ins. diam., 28 ins. in the ground, for the cor. of secs. 30 and 31, with brass cap marked



From which:

- A tamarack, 24 ins. diam., bears N48 1/2° E, 47 lks. (31.02 ft.) dist., mkd. T33N R25W S30 BT.
A tamarack, 14 ins. diam., bears S30 1/2° E, 30 lks. (19.80 ft.) dist., mkd. T33N R25W S31 BT.

1961 BLM record: The cor. of secs. 30 and 31 only, on the W bdy. of the Tp., monumented with an iron post, 36 ins. long, 2 ins. diam., mkd. as described in the official record, loosely set 15 ins. in the ground.

From which the original bearing tree:

- A larch snag, 14 ins. diam., bears S44 1/2° E, 30 lks. (19.80 ft.) dist., mkd. T33N R25W S31 BT.
(Record: S30 1/2° E, 30 lks. (19.80 ft.) dist.)

At the corner point, reset iron post 26 ins. in the ground in concrete. From which:

- A larch, 10 ins. diam., bears S54° E, 90 lks. (59.40 ft.) dist., mkd. T33N R25W S31 BT.

- II. Found a 2 ins. diam. iron pipe 4 ins. out of the ground with GLO brass cap mkd. as shown.

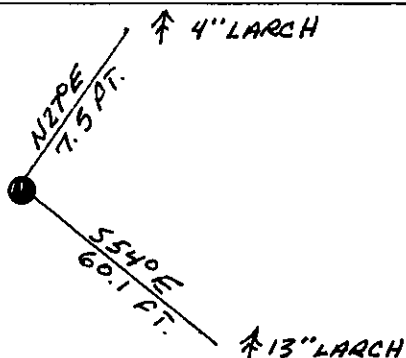
From which:

- Rotten remains, bears N48° E, 31.0 ft. dist. (Original BT.)
A larch, 13 ins. diam., bears S54° E, 60.1 ft. dist., healed face.
A larch stump, 15 ins. diam., bears S41° E, 20.0 ft. dist., mkd. R25W S31 BT. (Record: S30 1/2° E)

- III. Established one new bearing tree:

- A larch, 4 ins. diam., bears N27° E, 7.5 ft. dist., mkd. XBT.

Painted red bands around the bearing trees and attached "Land Survey Monument" and "Bearing Tree" signs.
Set a galvanized steel guard post with "Land Survey Marker" and Property Boundary: decals, South, 3 ft.
Magnetic declination: 20° East



SKETCH OF CORNER

CERTIFICATION

I, Kevin A. Todd, RONALD A. PEARSON,
certify the information shown in this record was performed by me or under my direction in compliance with the "Corner Recordation Act" (20-22-101, et seq., M.C.A.)

Ronald A. Pearson
Signature of Surveyor & Seal

12/17/92 9008LS
Date: Reg. No.

Employer: U.S. FOREST SERVICE

Office of Clerk and Recorder, County of Lincoln. This "corner record" was filed for record on 1-4-93 was noted on the cross-index plat and is assigned page No. 5212, in book No. Coral M. Cummings by BLS

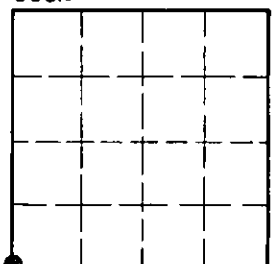
County Official

V-1

33 N 25W

Cross Index No. T. R. PMM

Sec.30



• - corner this sheet