

CERTIFIED CORNER RECORDATION

Corner SW Sec. Corner Sec. 16 T. 31N R. 34W P.M, MT Lincoln County

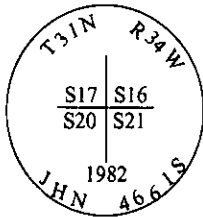
I. 1903 G.L.O. original record by Allen B. Benedict: Set granite stone 16x12x6 ins., 11 ins. in the ground, for corner of secs. 16,17,20 and 21, mkd. with 3 notches on S. and 4 notches on E. edges, from which:

- A fir, 20 ins. diam., bears N64°E, 36 lks. dist., mkd. "T31N R34W S16 BT".
- A fir, 24 ins. diam., bears S31°E, 72 lks. dist., mkd. "T31N R34W S21 BT".
- A tamarack, 20 ins. diam., bears S31°30'W, 103 lks. dist., mkd. "T31N R34W S20 BT".
- A pine, 20 ins. diam., bears N44°W, 5 lks. dist., mkd. T31N R34W S17 BT".

1982 Certified Corner Recordation by Jack H. Nimmeman, Reg No. 4661S: Found original stone as per G.L.O. records from which:

- A pine snag, bears N44°W, 5 lks. dist., scribed as per G.L.O records.
- A larch, 28 ins. diam., bears S31°W, 103 lks. dist., scribed as per G.L.O. records
- A snag, 36 ins. diam., bears S31°E, 72 lks. dist., scribed as per G.L.O. records.

At the corner point, set a 30 ins. long x 3 ins. diam., aluminum capped monument marked as shown below.



Established 4 new bearing trees:

- A fir, 16 ins. diam., bears N79°W, 13.0 ft. dist., mkd "S17 BT".
- A fir, 18 ins. diam., bears N7°E, 18.6 ft. dist., mkd "S16 BT".
- A fir, 20 ins. diam., bears S32°E, 26.3 ft. dist., mkd. "S21 BT".
- A fir, 18 ins. diam., bears S34°W, 20.3 ft. dist., mkd "S20 BT".

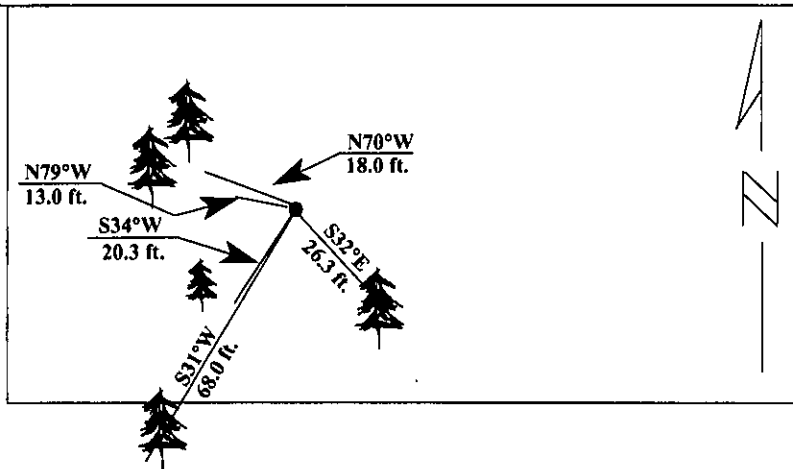
Buried the original stone alongside monument, and painted mounment and accessories with red paint.

II. Found an iron pipe, 2 1/2 ins. diam., 6 in. above ground, firmly set, with a brass cap, mkd. as shown above, from which:

- A fir, 13 ins. diam., bears N79°W, 13.0 ft. dist., healed face.
- A fir, 18 ins. diam., bears N70°W, 18.0 ft. dist., healed face. (rec. N7°E, 18.6 ft. dist.)
- A fir, 17 ins. diam., bears S32°E, 26.3 ft. dist., healed face.
- A fir, 14 ins. diam., bears S34°W, 20.3 ft. dist., healed face.
- A fir, 25 ins. diam., bears S31°W, 68.0 ft. dist., healed face.

III. Painted red bands around the bearing trees and attached Land Survey Monument and Bearing Tree signs.

Magnetic Declination: 20° East



SKETCH OF CORNER

CERTIFICATION

I. Ryan Rummelhart

certify the information shown herein is true and correct.

Signature Ground Party Chief

I. Alvah F. Hughes

certify that this Corner Record correctly represents work performed by me or under my direction in compliance with the "Corner Recordation Act" (70-22-101, et seq. M.C.A.)

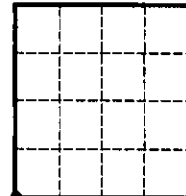
Signature of Surveyor & Spot

Date: 1/11/96

Reg. No.: 7322LS

Employer: U.S. FOREST SERVICE

Sec. 16



Office of Clerk and Recorder, County of LINCOLN. This "corner record" was filed for record on FEB 20, 1997 was noted on the cross-index plat and is assigned page No. 9230 in book No. CORAL M. CUMMINGS By JPB

County Official