

CERTIFIED CORNER RECORDATION

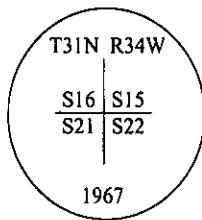
Corner SW Sec. Corner Sec. 15 T. 31N R. 34W P.M, MT Lincoln County

I. 1903 G.L.O. original record by Allen B. Benedict: Set a stone and four bearing trees.

1967 B.L.M. remonumentation record by Woodrow E. Damm et. al.: The corner of secs. 15, 16, 21 and 22, monumented with a limestone, 16x6x4 ins., firmly set, mkd. with 3 grooves on S. and 3 grooves on E. edges, and witnessed by the remains of the original bearing trees.

A dead pine, 9 ins. diam., bears N17°E, 32 lks. dist., mkd "T31N R34W S15 BT". (G.L.O. record)
A pine stump, 8 ins. diam., bears N44 1/2°W, 13 lks. dist., mkd "16 BT". (G.L.O. record)

At the corner point, set an iron post, 30 ins. long, 2 1/2 ins. diam., 24 ins. in the ground, with brass cap marked:



Established 4 new bearing trees:

A fir, 8 ins. diam., bears N10 1/2°E, 53 lks. dist., mkd "T31N R34W S15 BT".
A fir, 9 ins. diam., bears S47 1/2°E, 8 lks. dist., mkd "T31N R34W S22 BT".
A fir, 6 ins. diam., bears S37°W, 17 lks. dist., mkd. "T31N R34W S21 BT".
A fir, 8 ins. diam., bears N63°W, 51 lks. dist., mkd "T31N R34W S16 BT".

Bury the original stone alongside the iron post.

1982 Certified Corner Recordation by Jack H. Ninneman, Reg. No. 4661S: Varifies B.L.M. record.

II. Found a B.L.M. brass cap, 6 in. above ground, firmly set, mkd. as shown above, from which:

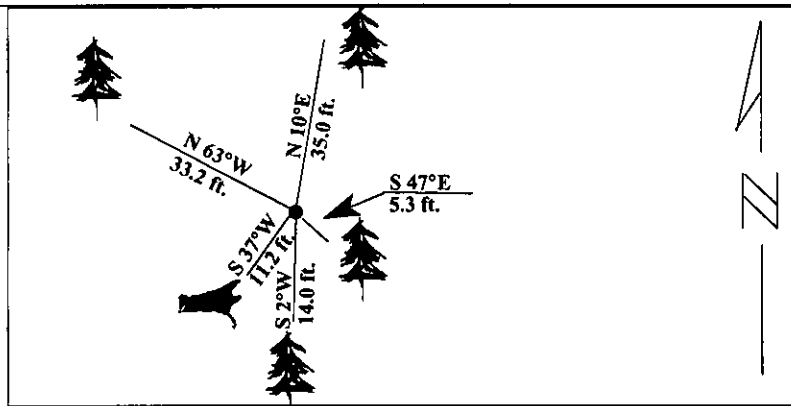
A fir, 10 ins. diam., bears N10 1/2°E, 35.0 ft. (53 lks.) dist., healed face.
A fir, 13 ins. diam., bears S47 1/2°E, 5.3 ft. (8 lks.) dist., healed face.
A down dead fir, 8 ins. diam., bears S37°W, 11.2 ft. (16.9 lks.) dist., healed face. (rec. 17 lks.)
A fir, 11 ins. diam., bears N63°W, 33.2 ft. (50.3 lks.) dist., healed face. (rec. 51 lks.)

III. Established one new bearing tree:

A fir, 10 ins. diam., bears S2°W, 14.0 ft dist., mkd. "T31N R34W S21 BT".

Painted red bands around the bearing trees and attached Land Survey Monument and Bearing Tree signs.

Magnetic Declination: 20° East



SKETCH OF CORNER

CERTIFICATION

i. Ryan Rummelhart

certify the information shown herein is true and correct.

Signature Ground Party Chief

Alvah F. Hughes

certify that this Corner Record correctly represents work performed by me or under my direction in compliance with the "Corner Recordation Act" (70-22-101, et seq., M.C.A.)

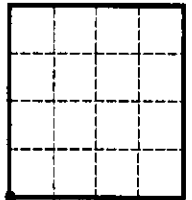
Signature of Surveyor & Seal

Date: 1/9/96

Reg. No.: 7322LS

Employer: U.S. FOREST SERVICE

Sec. 15



• - corner this sheet

Office of Clerk and Recorder, County of LINCOLN. This "corner record" was filed for record

on FEB 20, 1997 was noted on the cross-index plat and is assigned page No. 9229

in book No. _____

CORAL M. CUMMINGS

County Official

Cross Index No.

N-13

T.

31N

R.

34W

PMM

Adopted July 1, 1981, Montana Board of Professional Engineers & Land Surveyors