

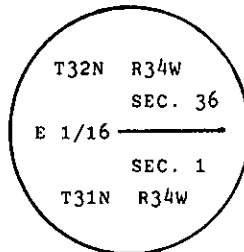
INSTRUCTIONS

1. Original and/or subsequent record used to evaluate the corner position.
2. Description of evidence found, note discrepancies in the record, state method of establishing lost or obliterated corners.
3. Description of monument and accessories set to perpetuate the corner position.
4. Sketch of corner, show all pertinent data which can best be shown in a sketch example, corner marking, topography ties, position of accessories, etc.
5. Certification must be signed and sealed by Land Surveyor registered in the State of Montana.
6. Fill in Cross Index & Section Diagram at bottom of sheet.

CERTIFIED CORNER RECORDATION

Corner E 1/16 of Sec. 1 T. 31 N. R. 34 W. P.M.M. Lincoln County

- I. Original Corner Recordation by J. W. NINNEMAN: (Book 1, page 255, filed in Lincoln County Courthouse.)
Set brass cap, marked as shown:



from which:

- A fir, 10 ins. diam., bears S9° E, 22.8 ft. dist., mkd. E 1/16 S 1 BT.
A fir, 12 ins. diam., bears N30° W, 9.8 ft. dist., mkd. E 1/16 S 36 BT.

1983 Corner Recordation filed by T. C. HILL: Found a 2 1/4 in. brass cap, 6 ins. above ground, mkd. as shown, from which:

- A fir, 8 ins. diam., bears S6° E, 23.1 ft. dist., mkd. 1/16 E.
A uprooted tree, bears N30° W, 9.8 ft. dist., mkd. 1/16.

Established one new bearing tree:

- A fir, 10 ins. diam., bears N5° W, 16.5 ft. dist., mkd. E 1/16 S 36 BT."

- II. Found a 2 in. steel pipe, 8 ins. above ground, with a 2 1/4 in. brass cap, mkd. as shown above, from which:

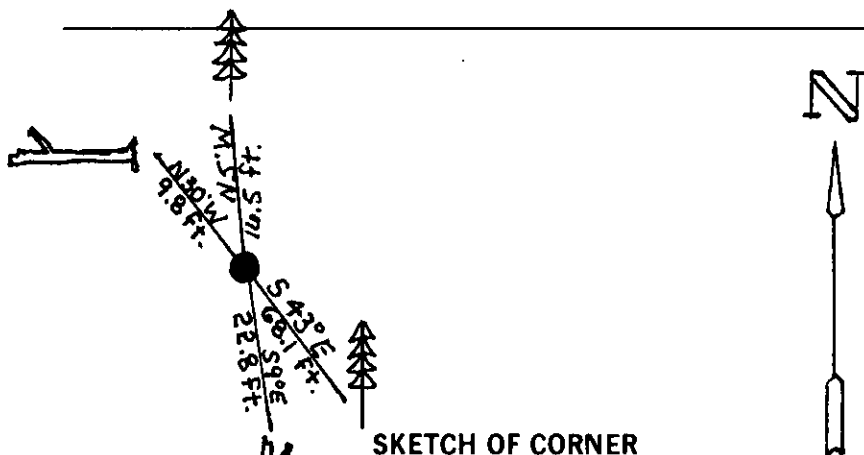
- A fir snag, 10 ins. diam., bears S9° E, 22.8 ft. dist., 1/16 E visible.
A fallen fir snag, bears N30° W, 9.8 ft. dist., 1/16 E visible.
A fir, 10 ins. diam., bears N5° W, 16.5 ft. dist., 16 BT visible.

- III. Established one new bearing tree:

- A fir, 14 ins. diam., bears S43° E, 68.1 ft dist., scribed E 1/16 S 1 BT.

Painted a red band around bearing trees and attached Land Survey Monument and Bearing Tree signs.

Magnetic Declination: 20° East.



SKETCH OF CORNER

CERTIFICATION

I, Rex O. Rice
certify the information shown herein is true and correct.

Rex O. Rice
Signature Ground Party Chief

I, Alvah F. Hughes
certify that this Corner Record correctly represents work performed by me or under my direction in compliance with the "Corner Recordation Act" (70-22-101 et seq., M.C.A.)

Alvah F. Hughes
Signature of Surveyor & Seal

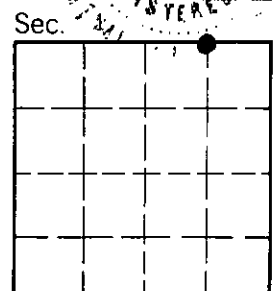
Date: 12/16/93 Reg. No. 7322LS

Employer: U.S. FOREST SERVICE

Office of Clerk and Recorder, County of Lincoln. This "corner record" was filed for record on Jan 12, 1994 was noted on the cross-index plat and is assigned page No. 6096, in book No. Coral M. Cummings, RB

County Official

Cross Index No. A-24 T. 31 N R. 34 W PMM



• - corner this sheet