

CERTIFIED LAND CORNER RECORDATION

DESCRIPTION OF CORNER EVIDENCE FOUND, AND ORIGINAL RECORD (IF KNOWN)

NO ORIGINAL CORNER ESTABLISHED

DESCRIPTION OF MONUMENT AND ACCESSORIES ESTABLISHED TO PERPETUATE THE ORIGINAL LOCATION OF THIS CORNER:

Date of work: April, 1979

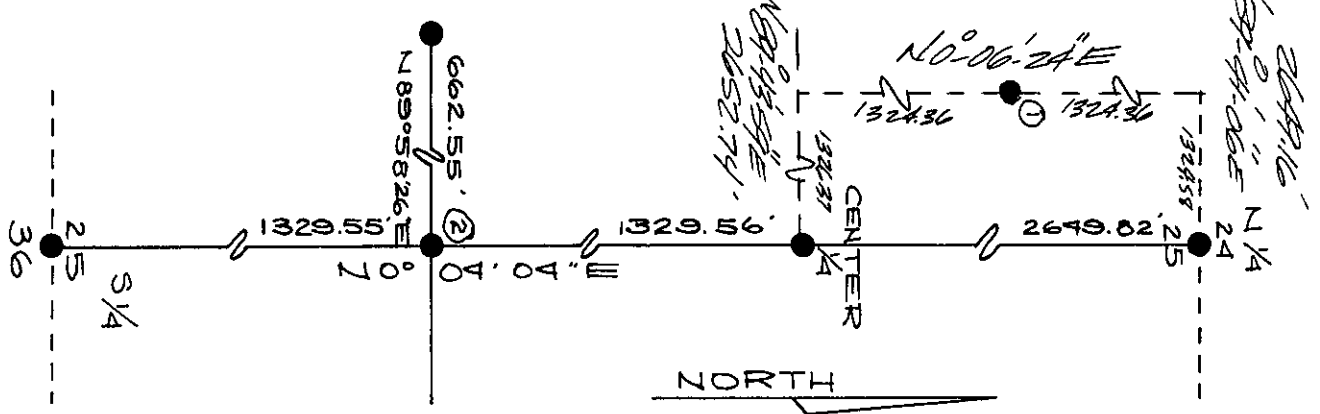
For the Center-South 1/16 Corner, Section 25, T31N, R34W, P.M.M. I set a 5/8 inch rebar with plastic cap marked MDL 4232-S

from / which New Bearing Tree

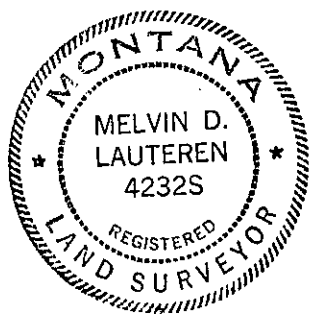
a Larch 4 inch diameter bears S69°11'W, 31.35 feet distance, marked C-S 1/16 S. 25 BT Tagged.

(OVER FOR NW 1/16 COR)

SKETCH, WITH COURSE AND DISTANCE TO ADJACENT CORNERS IF DETERMINED IN THIS SURVEY. (MAY SKETCH OR PASTE REPRODUCTION ON REVERSE SIDE.)



Surveyor's Seal



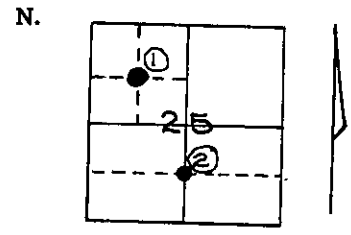
I, Gary B. Wagner
certify that the information shown herein is true and correct.

Gary B. Wagner
Signature of Ground Party Chief

I, MELVIN D. LAUTEREN
certify that I have carefully performed or reviewed the work done on the diagrammed corner as reported on this recordation form and approve the same.

Melvin D. Lauteren
Signature of Surveyor

DIAGRAM OF CORNER:



● = Corner recorded on the sheet

4232-S
Registration Number

Office of Clerk and Recorder, County of Lincoln

This "corner record" was filed for record on the 17th day of May, 1979, was noted on the cross-index plat and assigned page No. 544, in book No. 1

Clarence T. Taugher, Jr.
County Official

NW 1/6th COR

FOR THE NW 1/6th CORNER. I SET A 5/8 IN REBAR W/
CAP TAGGED MDL 42 32.5 AND I MAKE A BEAR-
ING TREE WHICH BEARS S36°21'30"E 15.70 FEET
SAID TREE BEING A 20" DIAM. PINE AND SCRIBED
"NW 1/6 S25 B.T."