

CERTIFIED LAND CORNER RECORDATION

DESCRIPTION OF CORNER EVIDENCE FOUND, AND ORIGINAL RECORD (IF KNOWN)

G.L.O. Original Record - Limestone Rock 16x12x4 marked 1/4 on W. Face

From which Original BT's:

a Fir 8" in diam. bears S35 1/2° E 7 lks dist.

a Pine 8" in diam. bears S43 1/2° W 33 lks dist.

No evidence of original stone found.

Original Fir BT was found dead and down marked plainly.

DESCRIPTION OF MONUMENT AND ACCESSORIES ESTABLISHED TO PERPETUATE THE ORIGINAL LOCATION OF THIS CORNER:

Date of work: April 1979

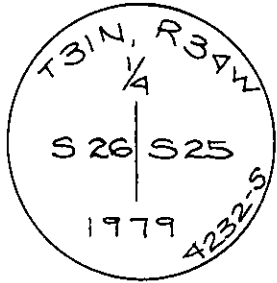
Set an Iron Post 2 1/2" diam. 30" long 20" in ground with Brass Cap marked:

Raised a collar of stone 2 1/2' at base to top of cap.

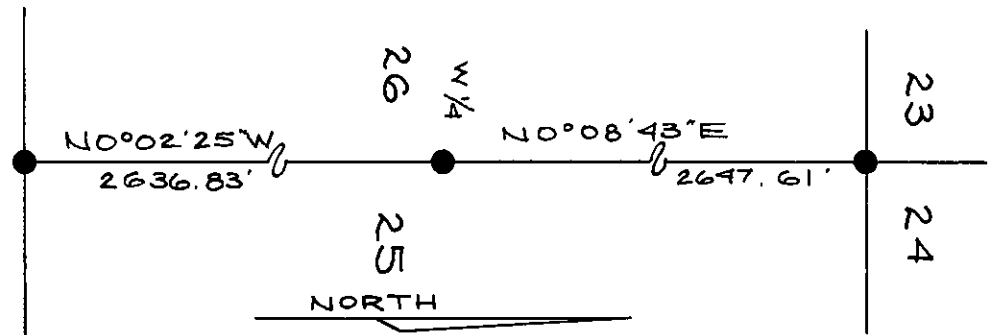
From which new BT's:

a Fir 12" diam. bears S80°48'31"E 35.90 feet marked 1/4
S. 25 BT tagged

a Pine 24" diam. bears S18°49'24"W 69.60 feet marked 1/4
S. 26 BT tagged



SKETCH, WITH COURSE AND DISTANCE TO ADJACENT CORNERS IF DETERMINED IN THIS SURVEY. (MAY SKETCH OR PASTE REPRODUCTION ON REVERSE SIDE.)



Surveyor's Seal



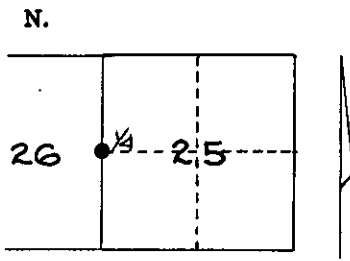
I, Gary B. Wagner certify that the information shown herein is true and correct.

Gary B. Wagner
Signature of Ground Party Chief

I, MELVIN D. LAUTEREN certify that I have carefully performed or reviewed the work done on the diagrammed corner as reported on this recordation form and approve the same.

Melvin D. Lauteren
Signature of Surveyor

DIAGRAM OF CORNER:



● = Corner recorded on the sheet

4232-5
Registration Number

Office of Clerk and Recorder, County of Lincoln

This "corner record" was filed for record on the 19th day of May 1979, was noted on the cross-index plat and is

assigned page No. 543, in book No. 1

Clemens L. Tophan
County Official