

ELIASON

CERTIFIED LAND CORNER RECORDATION

DESCRIPTION OF CORNER EVIDENCE FOUND, AND ORIGINAL RECORD (IF KNOWN)

G.L.O. Original Record - Slatestone 20x10x8 marked 1/4 N. face
a Pine 24" diam. bears N57°E, 62 lks. dist.

Evidence found: Found original stone 15x8x4 plainly marked
1/4 on North face set in mound of stone 2' at base 1' high.
Original bearing tree is deadfall.

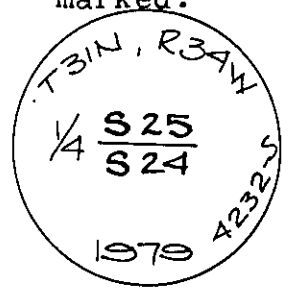
DESCRIPTION OF MONUMENT AND ACCESSORIES ESTABLISHED
TO PERPETUATE THE ORIGINAL LOCATION OF THIS CORNER:

Set a 2 1/2" Iron Post 30" long 6" in ground to solid bedrock with Brass Cap
marked: Date of work: April 1979

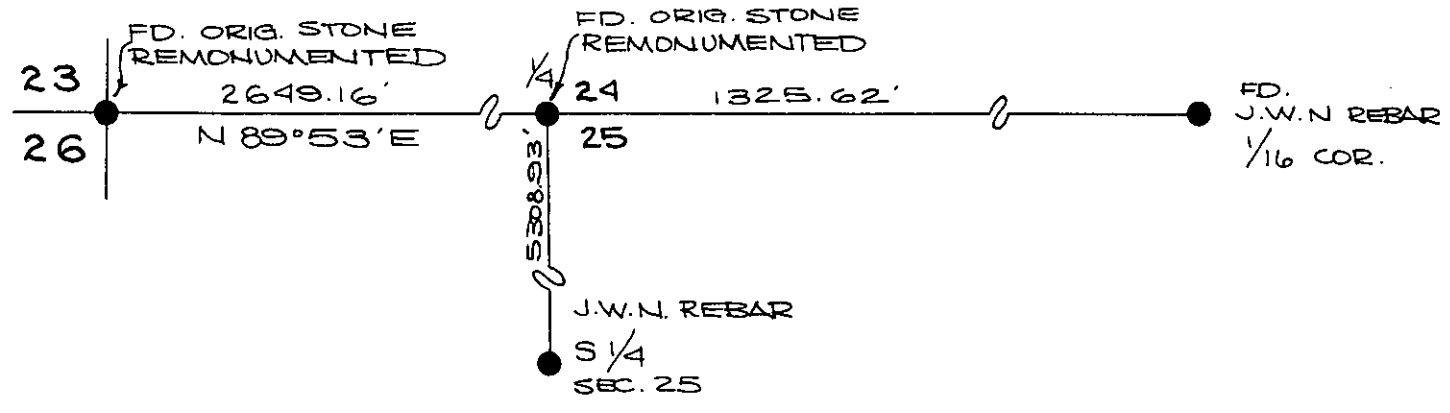
Raise a supporting mound of stone 3 1/2' at the base to the top
of Brass Cap and bury the original stone alongside.

From which New Bearing Tree:

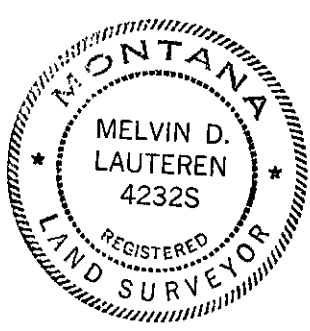
a Fir 10" diam. bears S10°25'07"E 29.13 feet dist.
Marked 1/4 S. 25 BT.



SKETCH, WITH COURSE AND DISTANCE TO ADJACENT CORNERS IF DETERMINED IN THIS SURVEY.
(MAY SKETCH OR PASTE REPRODUCTION ON REVERSE SIDE.)



Surveyor's Seal



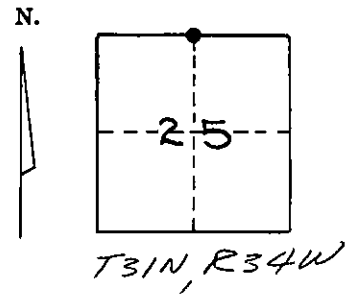
I, GARY B. WAGNER
certify that the information shown herein is true and correct.

Gary B. Wagner
Signature of Ground Party Chief

I, MELVIN D. LAUTEREN
certify that I have carefully performed or reviewed the
work done on the diagrammed corner as reported on this
recordation form and approve the same.

Melvin D. Lauteren
Signature of Surveyor

DIAGRAM OF CORNER:



● = Corner recorded on the sheet

4232-S
Registration Number

Office of Clerk and Recorder, County of Lincoln

This "corner record" was filed for record on the 17th day of May, 1979, was noted on the cross-index plot and is
assigned page No. 542, in book No. 1

Deanne L. Vaughn, by Patty Bell
County Official Deputy