

INSTRUCTIONS

1. Original and/or subsequent record used to evaluate the corner position.
2. Description of evidence found, note discrepancies in the record, state method of establishing lost or obliterated corners.
3. Description of monument and accessories set to perpetuate the corner position.
4. Sketch of corner, show all pertinent data which can best be shown in a sketch example, corner marking, topography ties, position of accessories, etc.
5. Certification must be signed and sealed by Land Surveyor registered in the State of Montana.
6. Fill in Cross Index & Section Diagram at bottom of sheet.

CERTIFIED CORNER RECORDATION

Corner 1/4 Cor. of Secs. 35 & 36 T. 31 N. R. 34 W. P.M.M. Lincoln County

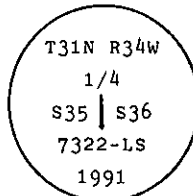
- I. 1903 original G.L.O. record by Allen B. Benedict: "Set a porphyry stone, 14x10x5 ins. 10 ins. in the ground, for 1/4 sec. cor. marked 1/4 on W. face, from which

A tamarack, 8 ins. diam., bears $N40^{\circ}45'E$, 124 lks. dist., marked 1/4 S36 BT.
A tamarack, 8 ins. diam., bears $N30^{\circ}00'W$, 89 lks. dist., marked 1/4 S35 BT."

- II. Found a loosely set stone, 14x8x5 ins., 5 ins. out of ground, no visible markings, from which

A larch snag, 13 ins. diam., bears $N6^{\circ}E$, 81.8 ft. (124 lks.) dist., mkd. "1/4 S35 BT"
(record $N40^{\circ}45'E$, 124 lks.).
A larch, 15 ins. diam., bears $N3^{\circ}E$, 58.75 ft. (89 lks.) dist., mkd. "1/4 S3"
(record $N30^{\circ}W$, 89 lks.).

- III. In place of stone monument, set a 2 1/2 ins. diam. aluminum pipe, 30 ins. long, 22 ins. in the ground with attached 3 1/4 ins. diam. U.S.D.A. Forest Service aluminum cap, marked as shown:



from which

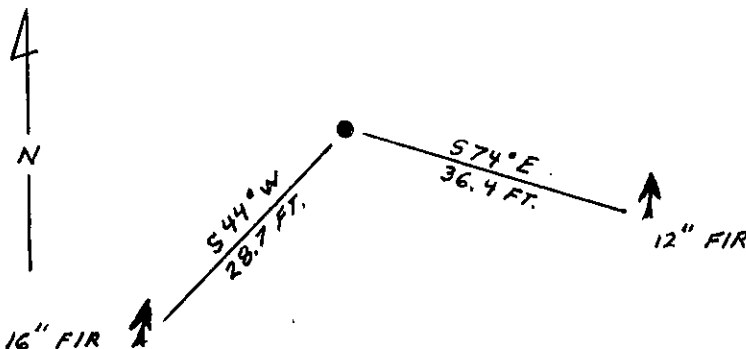
A douglas fir, 12 ins. diam., bears $S74^{\circ}E$, 36.4 ft. dist., mkd. 1/4 S36 BT.
A douglas fir, 16 ins. diam., bears $S44^{\circ}W$, 28.7 ft. dist., mkd. 1/4 S35 BT.

Set a 6 ft. galvanized steel guard post with "Survey Marker" decal attached, 3 ft., South.

Painted a red band around each bearing tree and attached "Land Survey Monument" & "Bearing Tree" signs.

Bury original stone alongside aluminum pipe.

Magnetic Declination: East, 20°



SKETCH OF CORNER

CERTIFICATION

I, Tom Hommel

certify the information shown herein is true and correct.

Thomas M. Hommel
Signature Ground Party Chief

I, Alvah F. Hughes

certify that this Corner Record correctly represents work performed by me or under my direction in compliance with the "Corner Recordation Act" (70-22-101, et seq., M.C.A.)

Alvah F. Hughes
Signature of Surveyor & Seal

Date: 11/6/91

Reg. No. 7322-LS

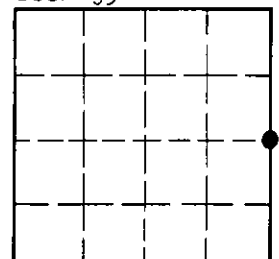
Employer: U.S. FOREST SERVICE

Office of Clerk and Recorder, County of Lincoln This "corner record" was filed for record on 4-22-92 was noted on the cross-index plat and is assigned page No. 5953, in book No. _____

County Official _____

X21 31 N 34 W
Cross Index No. _____ T. _____ R. _____ PMM

Sec. 35



• - corner this sheet