

CERTIFIED LAND CORNER RECORDATION

SECTION 11 TWP. 31 N., R. 34 W., M.P.M.

DESCRIPTION OF CORNER EVIDENCE FOUND, AND ORIGINAL RECORD (IF KNOWN)

NW Corner Found B.C. by B.L.M.
On North line found B.C. by B.L.M. for M.C.
N $\frac{1}{4}$ Corner found B.C. by B.L.M.
SW Corner found B.C. by B.L.M. 3 B.T.s
SE Corner found B.C. by B.L.M.

DESCRIPTION OF MONUMENT AND ACCESSORIES ESTABLISHED
TO PERPETUATE THE ORIGINAL LOCATION OF THIS CORNER:

Date of work: May, 1976

SEE REVERSE SIDE

SKETCH, WITH COURSE AND DISTANCE TO ADJACENT CORNERS IF DETERMINED IN THIS SURVEY.
(MAY SKETCH OR PASTE REPRODUCTION ON REVERSE SIDE.)

SEE REVERSE SIDE

Surveyor's Seal

I, Jack H. Ninneman
certify that the information shown herein is true and
correct.

Jack H. Ninneman
Signature of Ground Party Chief

I, Jack W. Ninneman
certify that I have carefully performed or reviewed the
work done on the diagrammed corner as reported on this
recordation form and approve the same.

Jack W. Ninneman
Signature of Surveyor

DIAGRAM OF CORNER:

N. See reverse
Side

= Corner recorded on the sheet

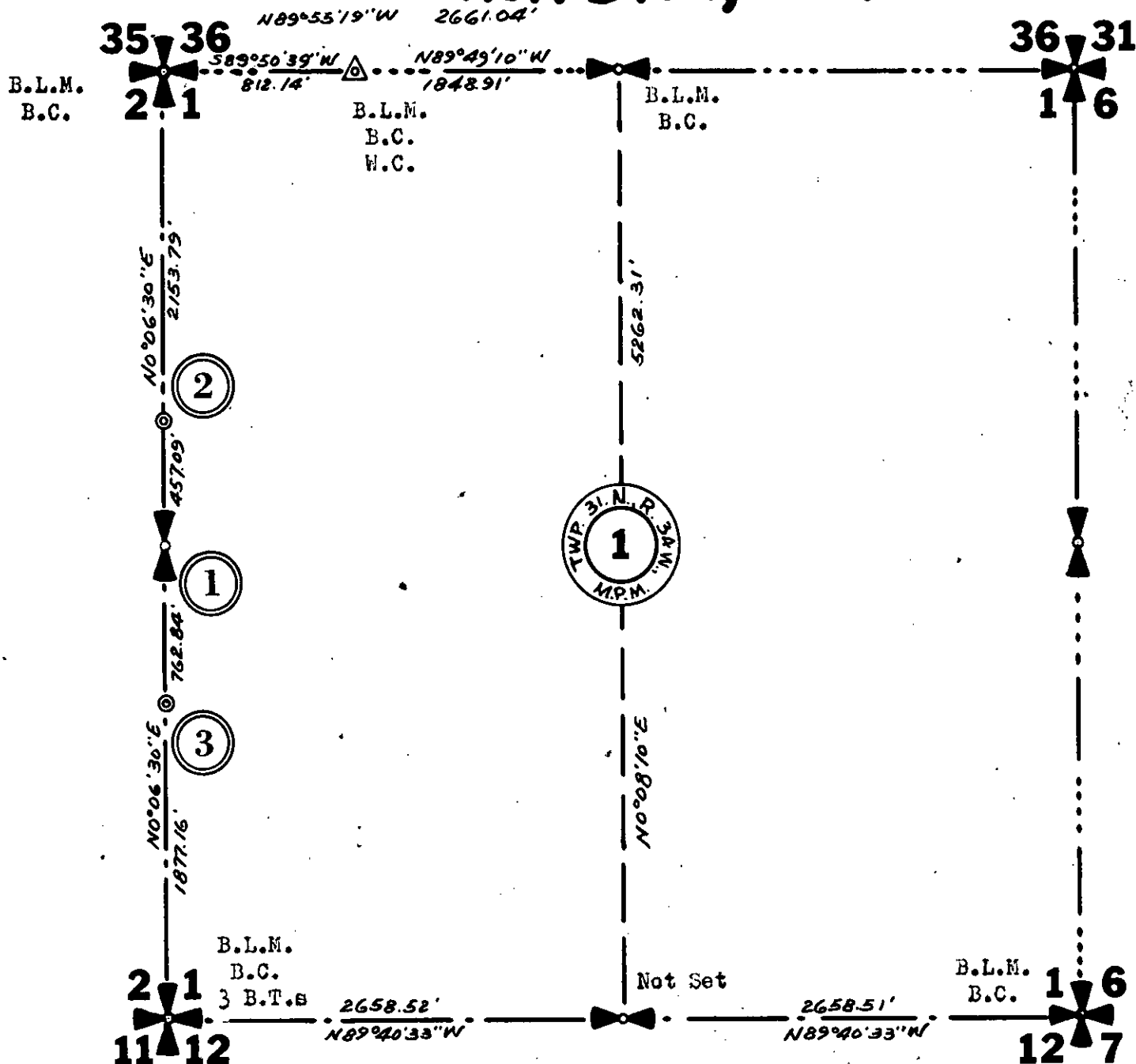
534 E.S.
Registration Number

Office of Clerk and Recorder, County of Lincoln

This "corner record" was filed for record on the 9th day of June 1976, was noted on the cross-index plat and is
assigned page No. 480, in book No. 1

Eliamou Z. Laughlin by Sherry
County Official *Owens, deputy*

TWP. 31 N., R. 34 W.



(1) Set Brass Capped Monument By: J.N. 534 E.S., 1976 No B. T. s Set.

(2) & (3) Set $\frac{1}{2}$ " x 24" Steel Rods with Caps Stamped: J.N. 534 E.S.
For Witness Corner Monuments to B. C. $W\frac{1}{4}$ Corner.