

INSTRUCTIONS

1. Original and/or subsequent record used to evaluate the corner position.
2. Description of evidence found, note discrepancies in the record, state method of establishing lost or obliterated corners.
3. Description of monument and accessories set to perpetuate the corner position.
4. Sketch of corner, show all pertinent data which can best be shown in a sketch example, corner marking, topography ties, position of accessories, etc.
5. Certification must be signed and sealed by Land Surveyor registered in the State of Montana.
6. Fill in Cross Index & Section Diagram at bottom of sheet.

CERTIFIED CORNER RECORDATION

Corner SW-SE 1/64 Section 2 T. 31 N R. 34 W P.M.M. Lincoln County

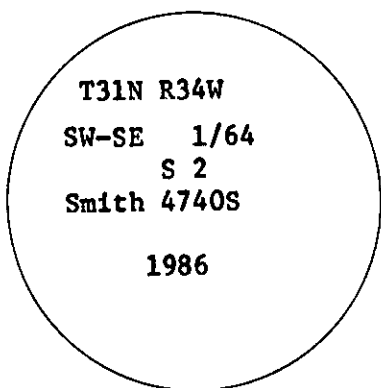
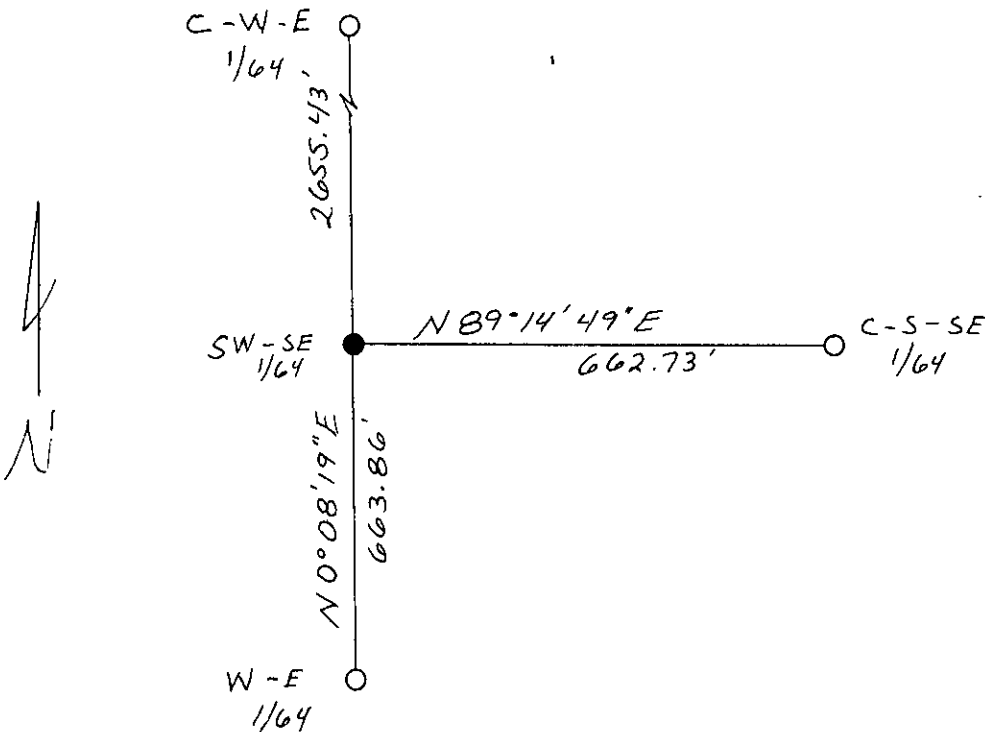
This corner was never set prior to this survey. Corner position was determined by information on Certificate of Survey No. 1105 and from control co-ordinates supplied by the Kootenai National Forest Cadastral Division.

Set a driveable Forest Service monument (3" aluminum cap on 3/4" aluminum rod), flush with ground surface.

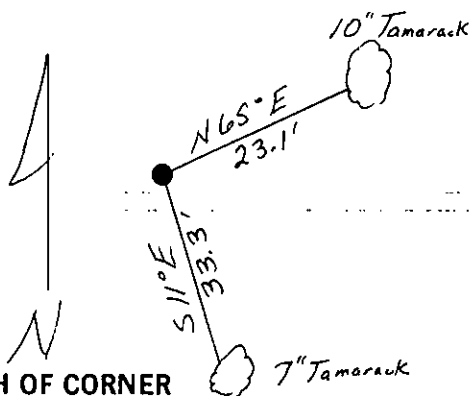
7" Tamarack marked "SW-SE 1/64 B T" bears South 11° East 33.3 feet

10" Tamarack marked "SW-SE 1/64 B T" bears North 65° East 23.1 feet

Cap marked as shown below



SKETCH OF CORNER



CERTIFICATION

Samuel R. Smith

I, Samuel R. Smith, certify the information shown herein is true and correct.

Signature Ground Party Chief

Samuel R. Smith

I, Samuel R. Smith, certify that this Corner Record correctly represents work performed by me or under my direction in compliance with the "Corner Recordation Act" (70-22-101, et seq., M.C.A.)

Signature of Surveyor & Seal

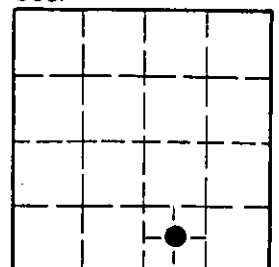
Date: 7/21/86 Reg. No. 4740S

Employer: Smith Surveying Co.

Office of Clerk and Recorder, County of Lincoln. This "corner record" was filed for record on Aug 11, 1986 was noted on the cross-index plat and is assigned page No. 3298, in book No. Janet B. Legal by Bill Buschhoff

County Official

Sec.



• - corner this sheet

Cross Index No. D-E 19.5 T. 31N R. 34W P.M.M.

Adopted July 1, 1981, Montana Board of Professional Engineers & Land Surveyors