

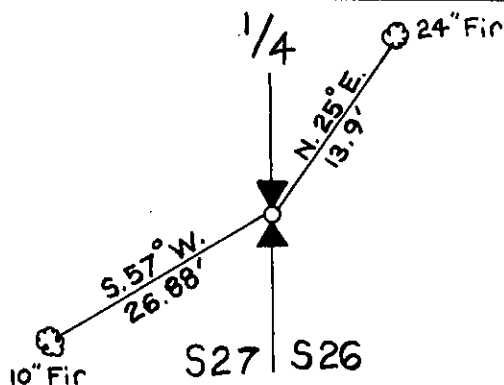
INSTRUCTIONS

1. Original and/or subsequent record used to evaluate the corner position.
2. Description of evidence found, note discrepancies in the record, state method of establishing lost or obliterated corners.
3. Description of monument and accessories set to perpetuate the corner position.
4. Sketch or corner, show all pertinent data which can best be shown in a sketch example, corner marking, topography ties, position of accessories, etc.
5. Certification must be signed and sealed by Registered Land Surveyor in State of Montana.
6. Fill in Cross Index & Section Diagram at bottom of sheet.

CERTIFIED CORNER RECORDATION

Corner W $\frac{1}{4}$ Sec. 26 T. 31N R. 34W P.M.M. Lincoln County

- I. From original 1903 G.L.O. Notes:
 Set a sand stone, 14"x12"x6", 10 ins. in the ground for $\frac{1}{4}$ sec. cor.
 marked $\frac{1}{4}$ on W. face, from which
 A Fir 14" dia. bears N.25°E., 21 lks. dist. marked $\frac{1}{4}$ S.26 B.T.
 A Fir 6" dia. bears N.4°30'W., 13 lks. dist. marked $\frac{1}{4}$ S.27 B.T.
- II. Found original stone, 14"x12"x6", visible $\frac{1}{4}$ on W. face.
 Found original 24" Fir bearing N.25°E. @ 13.9 ft.
- III. Set a U.S.D.A. Aluminum Mon. w/cap.
 Set a 10" Fir B.T. bearing S.57°W., @ 26.88 ft. w/tag and blaze
 scribed $\frac{1}{4}$ Sec. 27 B.T.
 Placed 54-3 tags on B.T.s



SKETCH OF CORNER

CERTIFICATION

I, Kent Bauer
 certify the information shown herein is true and correct.

Kent Bauer
 Signature Ground Party Chief

I, Carl R. McMullen, L.S.
 certify that this Corner Record correctly represents work performed
 by me or under by direction in compliance with the "Corner
 Recordation Act" (79-22-107, et seq., M.D.A.)

Carl R. McMullen
 Signature of Surveyor & Seal

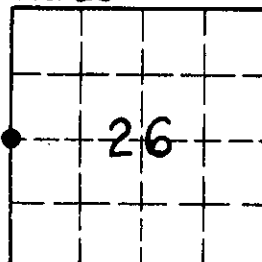
Date Jan. 85 Reg. No. 4659S

Employer: Carl R. McMullen & Associates

Office of Clerk and Recorder, County of Lincoln. This "corner
 record" was filed for record on the Mar 4 day of 1985
 was noted on the cross-index plat and is assigned page No. 3028, in
 book No. _____

Janet B. Sigel
 County Official

Sec. 26



• - corner this sheet

Cross Index No. T-17 T. 31N R. 34W P.M.M.