

## INSTRUCTIONS

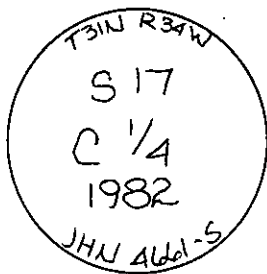
1. Original and/or subsequent record used to evaluate the corner position.
2. Description of evidence found, note discrepancies in the record, state method of establishing lost or obliterated corners.
3. Description of monument and accessories set to perpetuate the corner position.
4. Sketch of corner, show all pertinent data which can best be shown in a sketch example, corner marking, topography ties, position of accessories, etc.
5. Certification must be signed and sealed by Registered Land Surveyor in State of Montana.
6. Fill in Cross Index & Section Diagram at bottom of sheet.

## CERTIFIED CORNER RECORDATION

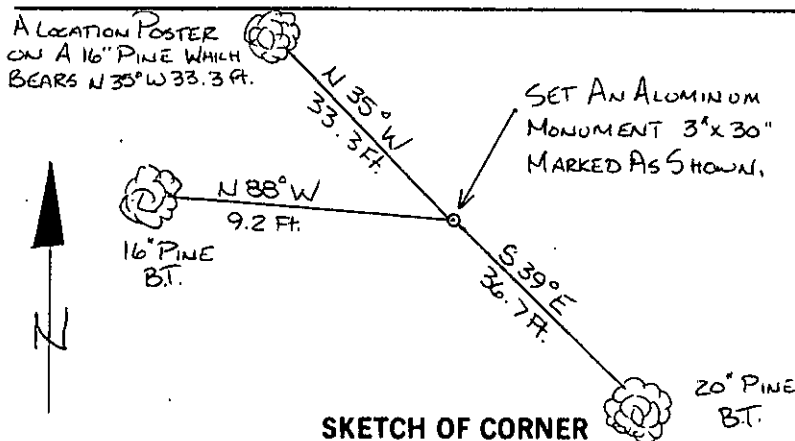
Corner C 1/4 Corner Sec. 17 T. 31N R. 34W P.M.M. Lincoln County

1. This corner not previously set.

2. Set: A 3"x30" aluminum capped monument marked as shown below from which,  
 A 16" Pine bears N88°W 9.2 feet scribed C 1/4 S 17 B T and posted.  
 A 20" Pine bears S39°E 36.7 feet scribed C 1/4 S 17 B T and Posted.  
 A location poster on a 16" Pine which bears N35°W 33.3 feet.  
 Painted monument and accessories with bright red paint.



Set 3" aluminum monument marked as shown.



## CERTIFICATION

I, Jack H. Ninneman  
 certify the information shown herein is true and correct.

Jack H. Ninneman  
 Signature Ground Party Chief

I, Jack H. Ninneman  
 certify that this Corner Record correctly represents work performed  
 by me or under by direction in compliance with the "Corner  
 Recordation Act" (70-22-101, et seq., M.D.A.)

Jack H. Ninneman  
 Signature of Surveyor & Seal

Date: Oct. 82 Reg. No. 4661S

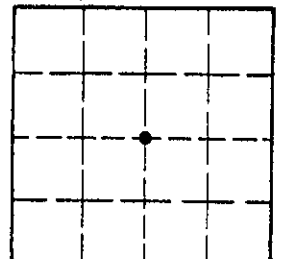
Employer: Ninneman Engineering Inc.

Office of Clerk and Recorder, County of LINCOLN. This "corner  
 record" was filed for record on the Dec. 9 day of 1982  
 was noted on the cross-index plat and is assigned page No. 2105, in  
 book No. \_\_\_\_\_

Eleanor L. Vaughn by Betty L. Conner  
 County Official deputy

Cross Index No. L-7 T. 31N R. 34W PMM

Sec. 17



• corner this sheet