

CERTIFIED LAND CORNER RECORDATION

Sections 24 - 25 Twp. 31 N., R. 34 W., M.P.M.

DESCRIPTION OF CORNER EVIDENCE FOUND, AND ORIGINAL RECORD (IF KNOWN)

- #1. Standard Brass Cap by B .L.M.
- #2. Never Set
- #3. Never Set
- #4. Found Original Stone in Place Bearing Trees had been Destroyed

See reverse side sketch

DESCRIPTION OF MONUMENT AND ACCESSORIES ESTABLISHED
TO PERPETUATE THE ORIGINAL LOCATION OF THIS CORNER:

Date of work: 4/3/'70

SEE REVERSE SIDE

SKETCH, WITH COURSE AND DISTANCE TO ADJACENT CORNERS IF DETERMINED IN THIS SURVEY.
(MAY SKETCH OR PASTE REPRODUCTION ON REVERSE SIDE.)

SEE REVERSE SIDE

Surveyor's Seal

I, Jack H. Ninneman
certify that the information shown herein is true and correct.

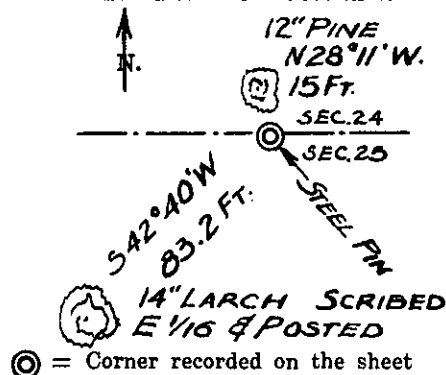
Jack H. Ninneman
Signature of Ground Party Chief

I, Jack W. Ninneman
certify that I have carefully performed or reviewed the work done on the diagrammed corner as reported on this recordation form and approve the same.

Jack W. Ninneman
Signature of Surveyor

354 ES
Registration Number

DIAGRAM OF CORNER:



Office of Clerk and Recorder, County of Lincoln

This "corner record" was filed for record on the 25th day of May 1970, was noted on the cross-index plat and is assigned page No. 203, in book No. 1

ELEANOR L. VAUGHN, By: *Mac Watson*
County Official Deputy.

DESCRIPTION OF MONUMENT & ETC.

Sections 24 - 25 Twp. 31 N., R. 34 W., M.P.M.

- #1. Standard Brass Cap by B.L.M.
- #2. Set a Steel Pin 36 inches Long from Which a 12" Pine Bears N 28°11'W 15 Feet
Scribed E 1/16 and Posted
A 14" Larch Bears S 42°40'W 83.2 Feet
Scribed E 1/16 and Posted
- #3. Set a Spike at the Centerline of Iron Creek Road
- #4. Found and Painted Original Stone From Which an 18" Pine Bears N 11°E 13.1 Feet
Scribed 1/4 BT and Posted

