

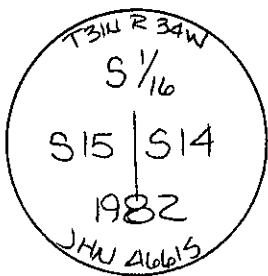
INSTRUCTIONS

1. Original and/or subsequent record used to evaluate the corner position.
2. Description of evidence found, note discrepancies in the record, state method of establishing lost or obliterated corners.
3. Description of monument and accessories set to perpetuate the corner position.
4. Sketch or corner, show all pertinent data which can best be shown in a sketch example, corner marking, topography ties, position of accessories, etc.
5. Certification must be signed and sealed by Registered Land Surveyor in State of Montana.
6. Fill in Cross Index & Section Diagram at bottom of sheet.

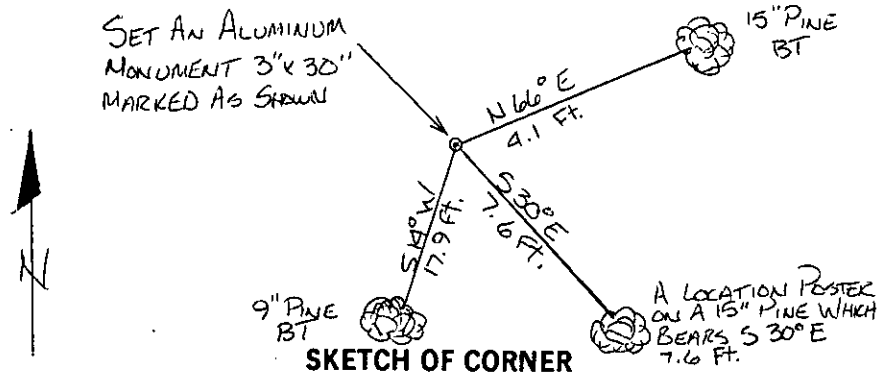
CERTIFIED CORNER RECORDATION

Corner S 1/16 Corner Sec. 14 T. 31N. R. 34W P.M.M. Lincoln County

1. This corner not previously set.
2. Set: A 3"x 30" aluminum monument marked as shown below from which,
A 15" Pine bears N66°E 4.1 feet scribed S 1/16 S 14 BT and posted.
A 9" Pine bears S 14°W 17.9 feet scribed S 1/16 S 15 BT and posted.
A location Poster on a 15" Pine bears S30°E 7.6 feet.
Painted monument and accessories with bright red paint.



Set 3" aluminum monument marked as shown.



CERTIFICATION

I, Jack H. Ninneman
certify the information shown herein is true and correct.

Jack H. Ninneman
Signature Ground Party Chief

I, Jack H. Ninneman
certify that this Corner Record correctly represents work performed by me or under by direction in compliance with the "Corner Recordation Act" (70-22-101, et seq., M.D.A.)

Jack H. Ninneman
Signature of Surveyor & Seal

Date: Oct. 82 Reg. No. 4661S.

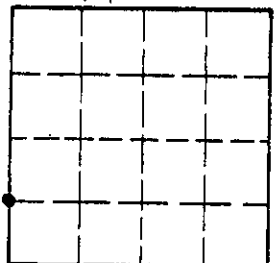
Employer: Ninneman Engineering Inc.

Office of Clerk and Recorder, County of Lincoln. This "corner record" was filed for record on the Oct. 20 day of 1982 was noted on the cross-index plat and is assigned page No. 1992, in book No. _____

Eleanor L. Vaughn by Letty L. Conces
County Official deputy

Cross Index No. M-17 T. 31N R. 34W P.M.M.

Sec. 14



• corner this sheet