

INSTRUCTIONS

1. Original and/or subsequent record used to evaluate the corner position.
2. Description of evidence found, note discrepancies in the record, state method of establishing lost or obliterated corners.
3. Description of monument and accessories set to perpetuate the corner position.
4. Sketch of corner, show all pertinent data which can best be shown in a sketch example, corner marking, topography ties, position of accessories, etc.
5. Certification must be signed and sealed by Registered Land Surveyor in State of Montana.
6. Fill in Cross Index & Section Diagram at bottom of sheet.

CERTIFIED CORNER RECORDATION

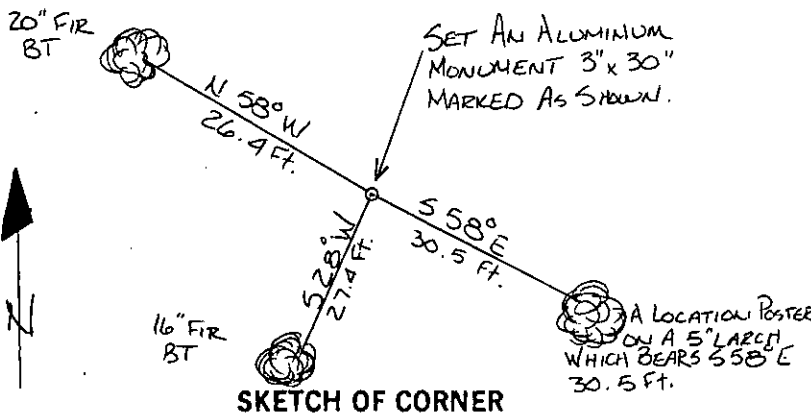
Corner C-E-W-E 1/256 Corner Sec. 14 T. 31N R. 34W P.M.M. Lincoln County

1. This corner not previously set.

2. Set: A 3" X 30" aluminum capped monument marked as shown below from which,
 A 20" Fir bears N 58°W 26.4 feet scribed C-E-W-E 1/256B.T. and posted.
 A 16" Fir bears S 28°W 27.4 feet scribed C-E-W-E 1/256B.T. and posted.
 A location poster on a 5" Larch bears S 58°E 30.5 feet.
 Painted monument and accessories with bright red paint.



Set 3" aluminum monument marked as shown.



SKETCH OF CORNER

CERTIFICATION

Jack H. Ninneman

I, Jack H. Ninneman certify the information shown herein is true and correct.

Jack H. Ninneman
Signature Ground Party Chief
Jack H. Ninneman

I, Jack H. Ninneman certify that this Corner Record correctly represents work performed by me or under my direction in compliance with the "Corner Recordation Act" (70-22-101, et seq., M.D.A.)

Jack H. Ninneman
Signature of Surveyor & Seal

Date: Sept 82 Reg. No. 46615

Employer: Ninneman Engineering Inc.

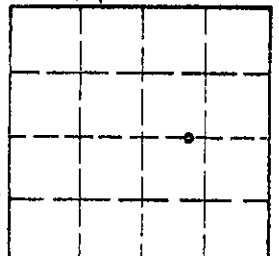
Office of Clerk and Recorder, County of Lincoln. This "corner record" was filed for record on the Oct. 20 day of 19 82 was noted on the cross-index plat and is assigned page No. 1982, in book No. Eleanor L. Vaughn by Betty L. Conner

County Official

deputy

Cross Index No. L-19, 20 T. 31N R. 34W P.M.M.

Sec. 14



• corner this sheet