

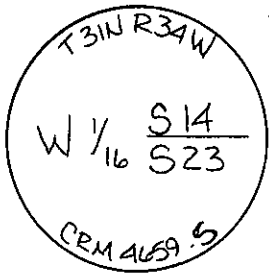
INSTRUCTIONS

1. Original and/or subsequent record used to evaluate the corner position.
2. Description of evidence found, note discrepancies in the record, state method of establishing lost or obliterated corners.
3. Description of monument and accessories set to perpetuate the corner position.
4. Sketch of corner, show all pertinent data which can best be shown in a sketch example, corner marking, topography ties, position of accessories, etc.
5. Certification must be signed and sealed by Registered Land Surveyor in State of Montana.
6. Fill in Cross Index & Section Diagram at bottom of sheet.

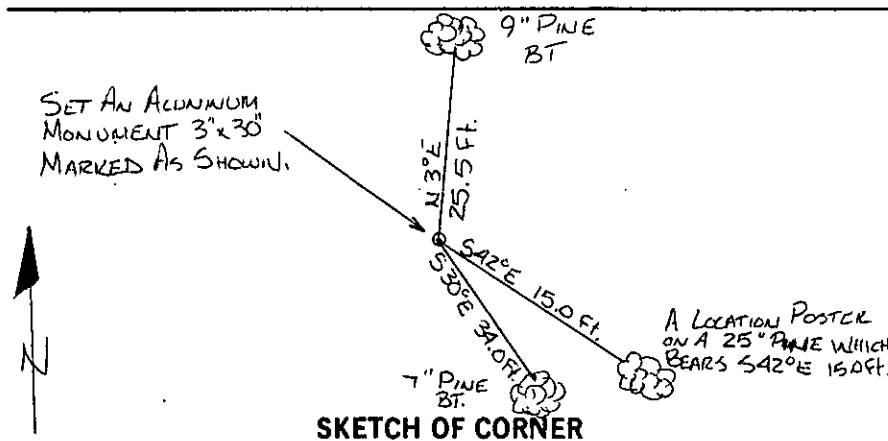
CERTIFIED CORNER RECORDATION

Corner W 1/16 Corner Sec. 14 T. 31N R. 34W P.M.M. Lincoln County

1. This corner not previously set.
2. Set: A 3"x 30" aluminum capped monument marked as shown below from which,
A 9" Pine bears N3°E 25.5 feet scribed W 1/16 S 14 B T and posted.
A 7" Pine bears S30°E 34.0 feet scribed W 1/16 S 23 B T and posted.
A location poster on a 25" Pine which bears S42°E 15.0 feet.
Painted monument and accessories with bright red paint.



Set 3" aluminum monument marked as shown.



CERTIFICATION

I, Carl R. Mc Millen
certify the information shown herein is true and correct.

Signature Ground Party Chief

I, Carl R. McMillen
certify that this Corner Record correctly represents work performed by me or under my direction in compliance with the "Corner Recordation Act" (70-22-101, et seq., M.D.A.)

Signature of Surveyor & Seal

Date: Oct. 82 Reg. No. 4659 S.

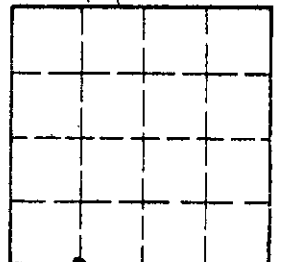
Employer: Ninneman Engineering Inc.

Office of Clerk and Recorder, County of Lincoln. This "corner record" was filed for record on the Oct. 30 day of 19, 82 was noted on the cross-index plat and is assigned page No. 1980, in book No. _____

Eleanor L. Vaughn Betty L. Conner
County Official deputy

Cross Index No. N-18 T. 31N R. 34W PMM

Sec. 14



• corner this sheet