

Hydrow #587

INSTRUCTIONS

1. Original and/or subsequent record used to evaluate the corner position.
2. Description of evidence found, note discrepancies in the record, state method of establishing lost or obliterated corners.
3. Description of monument and accessories set to perpetuate the corner position.
4. Sketch of corner, show all pertinent data which can best be shown in a sketch example, corner marking, topography ties, position of accessories, etc.
5. Certification must be signed and sealed by Registered Land Surveyor in State of Montana
6. Fill in Cross Index & Section Diagram at bottom of sheet.

CERTIFIED CORNER RECORDATION

Corner 1/4 Corner, Sec. 23/24, 31N R. 34W P.M.M. Lincoln County

Original Record:

At 40.00 ch. set a limestone 16x12x4 ins. marked 1/4 on W. face, from which:

- A Pine, 12 ins. diam., bears N30°30'W 153 lks.
- A fir, 8 ins. diam., bears N5°45'E 155 lks.

Evidence Found:

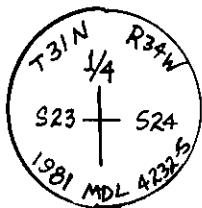
Original BTs, a Pine, 20 ins. diam., and a fir, 12 ins. diam., No evidence of original stone. I re-establish the position of the 1/4 Corner as per the sketch herewith.

At the true position of the 1/4 Corner I set a 2-1/2 ins. diam. x 28 ins. long aluminum pipe with cap marked as shown below from which the original BTs:

- A Pine 20 ins. diam., bears N3°50'12"W 100.30 feet
- A Fir 12 ins. diam., bears N5°51'56"E 103.52 feet

I tag the BTs. I paint rock mound and monument and BTs with red paint. I nail a location poster on a 12 ins. diam. Douglas Fir which bears N75°E 3.30 feet from the corner.

SEE SKETCH ON REVERSE FOR DETAILS.



CERTIFICATION

I, L. A. Dolezal

certify the information shown herein is true and correct.

L. A. Dolezal
Signature Ground Party Chief

I, Melvin D. Lauteren

certify that this Corner Record correctly represents work performed by me or under my direction in compliance with the "Corner Recordation Act" (70-22-101, et seq.)
Melvin D. Lauteren
Signature of Surveyor & Seal

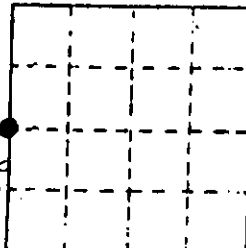
Date: _____ Reg. No. 4232-S

Employer: Kootenai Engineering, Inc.

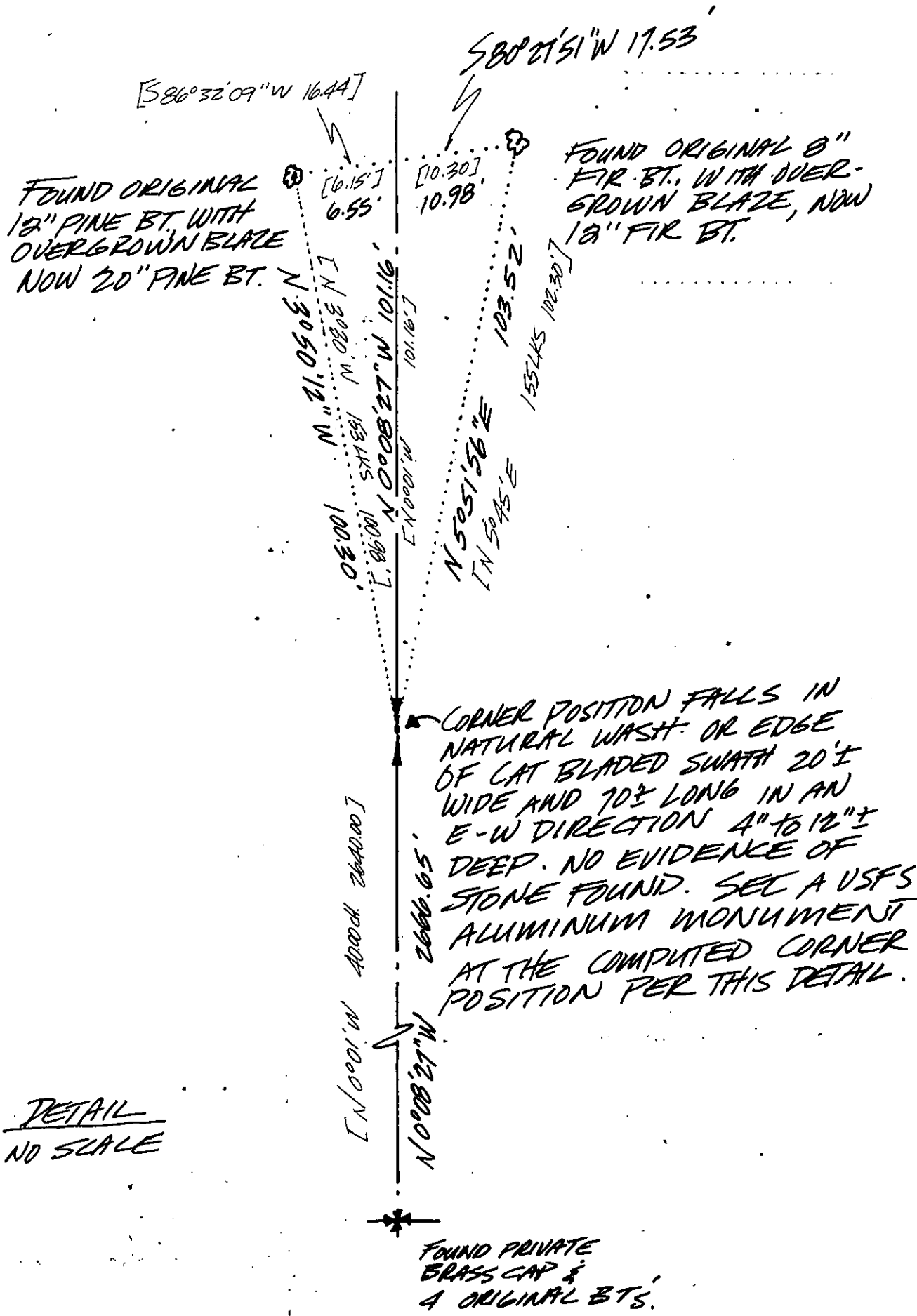
SKETCH OF CORNER

Office of Clerk and Recorder, County of Lincoln. This "corner record" Sec. 24
was filed for record on the 12th day of Jan 19 82, was noted on the cross-index plat and
is assigned page No. 1462, in book No. Eleanor L. Vaughn by Betty J. Conces
County Official Betty J. Conces

Cross Index No. P-21 31N R. 34W P.M.M.



• - corner this sheet



DETAIL
 NO SCALE