

CERTIFIED CORNER RECORDATION

Corner C S NW 1/64 S30 T. 31 N. R. 34 W. P.M.M. LINCOLN County

- I. Record: 1998 U.S.F.S. Certified Corner Recordation by Steven A. Boyer, Mt. Reg. No. 9750LS
Set by survey, a 3/4 in. diam. aluminum driveable rod, 30 ins. long, flush with the ground, with a 3 1/4 in. diam. aluminum cap, mkd. as shown.



Establish two new bearing trees:

- A fir, 25 ins. diam., bears S39°E, 11.5 ft. dist., marked C S NW 1/64 S23 BT.
A fir, 10 ins. diam., bears EAST, 30.5 ft. dist., marked "X" on a snow blaze "BT".

Painted bearing trees and attached Land Survey Monument and Bearing Tree signs.

- II. Found a 3/4 in. diam. aluminum rod, 6 ins. above ground with a 3 1/4" diam. aluminum cap marked as shown above. From which the original bearing trees:
A fir, 10 ins. diam., bears N82°E, 9.2 ft. dist., marked X BT. (Record: EAST, 30.5 ft.)
A fir stump, 28 ins. diam., bears S55°W, 16.9 ft. dist., no visible marks. (Record: S39°E, 11.5 ft.)

During the investigation for a timber theft, it was determined that this monument had been moved from its original position as verified by the original bearing trees.

- III. Set by distance-distance intersection from the found original bearing trees, a 3/4 in. diam. by 30 in. long aluminum rod, 29 ins. in the ground with a 3 1/4 in. diam. aluminum cap marked as shown. From which:

The original bearing trees

- A fir, 10 ins. diam., bears N86°E, 30.5 ft. dist., marked X BT.
A fir stump, 28 ins. diam., bears S39°E, 11.5 ft. dist., no visible marks.



The new bearing tree

- A fir, 13 ins. diam., bears S46°E, 59.4 ft. dist., marked C S NW 1/64 S23 BT.

Attached Bearing Tree and Land Survey Monument signs to the bearing trees. Painted red the scribed face and a red band around the bearing trees. Set a 6 ft. galvanized steel guard post 3 ft. South and East of the corner, with Land Survey Monument and Property Boundary decals attached.

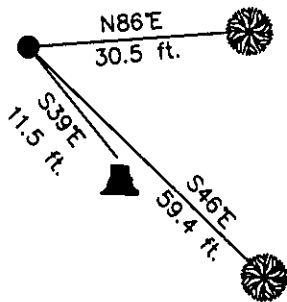
Date of Fieldwork: 6/19/2003

Survey crew: Tom Hommel, Steve Boyer

Magnetic declination: 20° East assumed

Equipment used: Hand compass and loggers tape

U.S. Forest Service, Supervisors Office, 1101 Hwy. 2 West, Libby, MT 59923 (406) 293-6211



SKETCH OF CORNER

NOT TO SCALE

CERTIFICATION

I, Thomas M. Hommel 10800LS
certify the information shown herein is true and correct.

Signature Ground Party Officer

Steven A. Boyer

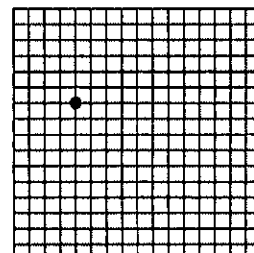
I, Steven A. Boyer
certify that this Corner Record correctly represents work performed by me or under my direction in compliance with the "Corner Recordation Act" (78-22-106 M.C.A.)

Signature of Surveyor & Set

Date: 1/29/2007 Reg. No. 9750LS

Employer: U. S. Forest Service

Sec. 23



• corner this sheet

Office of Clerk and Recorder, County of Lincoln

200689 BOOK: CCR CC&R'S PAGE: 11004 Pages: 1

STATE OF MONTANA LINCOLN COUNTY

RECORDED: 01/31/2007 12:35 KOI: CC&R'S

TAMMY D. LAUER CLERK AND RECORDER

FEE: \$0.00

BY: Vicki French Deputy

NO: FILED

Cross Index No. 0.5-18 T. 31N. R. 34W. P.M., MT

Adopted July 1, 1981, Montana Board of Professional Engineers & Land Surveyors