

INSTRUCTIONS

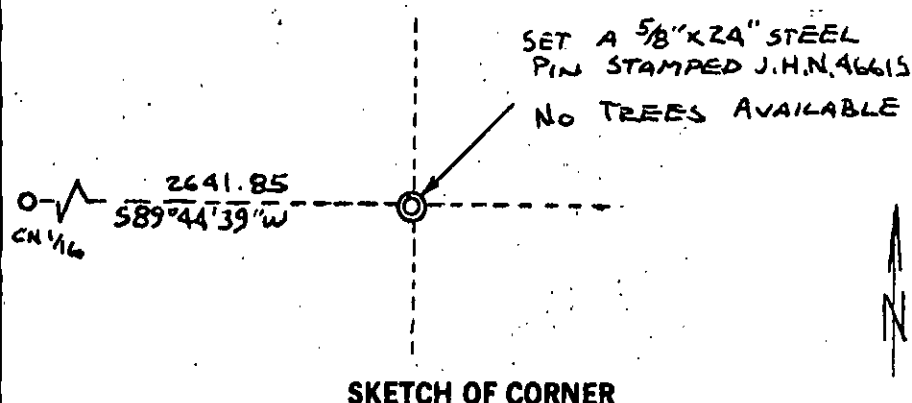
1. Original and/or subsequent record used to evaluate the corner position.
2. Description of evidence found, note discrepancies in the record, state method of establishing lost or obliterated corners.
3. Description of monument and accessories set to perpetuate the corner position.
4. Sketch of corner, show all pertinent data which can best be shown in a sketch example, corner marking, topography ties, position of accessories, etc.
5. Certification must be signed and sealed by Registered Land Surveyor in State of Montana.
6. Fill in Cross Index & Section Diagram at bottom of sheet.

CERTIFIED CORNER RECORDATION

Corner NE 1/16 Cor. Sec. 36 T. 31N R. 34W P.M.M. Lincoln County

Record: Not previously set

Set: A 5/8" X 24" capped steel pin stamped J.H.N. 4661S.
There were no trees available for bearing trees.



SKETCH OF CORNER

CERTIFICATION

1. Jeff Paullin

certify the information shown herein is true and correct.

Jeff Paullin
Signature Group Party Chief

1. Jack H. Ninneman

certify that this Corner Record correctly represents work performed by me or under my direction in compliance with the "Corner Recordation Act" (70-22-101, et seq., M.D.A.)

Jack H. Ninneman
Signature of Surveyor & Seal

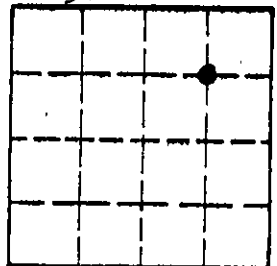
Date: 7/10/81 Reg. No. 4661S

Employer: Ninneman Engineering Inc.

Office of Clerk and Recorder, County of Lincoln. This "corner record" was filed for record on the 14th day of July 1981 was noted on the cross-index plat and is assigned page No. 1090 in book No. 1

Cross Index No. Sec. 36 T. 31N R. 34W P.M.M.

Sec. 36



• corner this sheet