

CERTIFIED CORNER RECORDATION

SE Corner of Lot 2, Blk. 3, T. 31 N., R. 34 W., P.M.M. Lincoln County
Hartwell Addition

Record :

Found Evidence :

1/2 inch rebar with yellow plastic cap stamped: FS Control.
Approximately 3 inches above ground.

1/2 inch galvanized pipe with wooden plug and tack drove in
the top approximately 10 inches above ground.

Marking the South boundary of USFS. Refer to Legend 3, per
Plat No. 4404.

Perpetuation :

Set reference points. See diagram below.

1/2" F.S.
CONTROL



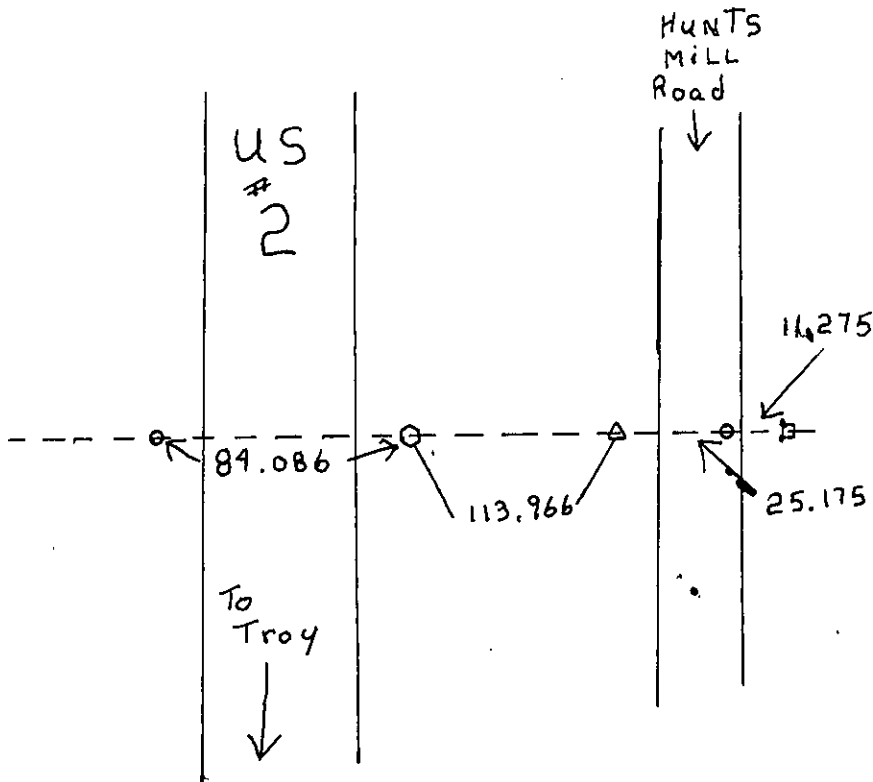
5/8" KED YPC
4975-S



1/2" Pipe
with Tack



1/2" DAVIS
CONTROL YPC



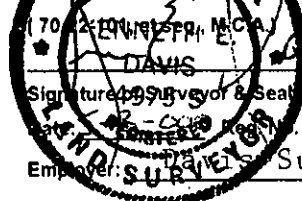
Sketch of Corner

CERTIFICATION

I, George Clark
certify the information shown herein is true and correct

Ken E. Davis
Signature of Ground Party Chief
Ken E. Davis

I, Ken E. Davis
certify that this Corner Record correctly represents work performed by
me or under my direction in compliance with the "Corner Recordation
Act"



Ken E. Davis
Signature of Surveyor & Seal
Ken E. Davis
Employer: Ken E. Davis Surveying, Inc.

Section

Office of Clerk and Recorder, County of Lincoln.

This "corner record" was filed for record on 5-9-00

was noted on the cross-index plat and is assigned page No. 10448

in book No. Coral M. Lumming By Deb
County Official

