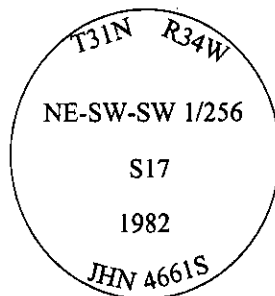


CERTIFIED CORNER RECORDATION

Corner NE-SW-SW 1/256 Sec. 17 T. 31N R. 34W P.M., MT Lincoln County

- I. 1982 Certified Corner Recordation by Jack H. Ninneman, 4661S: This corner was not previously set. Set a 3" x 30" aluminum capped monument marked as shown below.



from which:

- A 13" Hemlock, bears N58°E, 2.6 feet, scribed "NE-SW-SW 1/256 S17 BT" and posted.
- A 13" Hemlock, bears N77°W, 19.7 feet, scribed "NE-SW-SW 1/256 S17 BT" and posted.
- A location poster on a 4" Hemlock, bearing S55°W, 3.0 feet.

Painted monument and accessories with bright red paint.

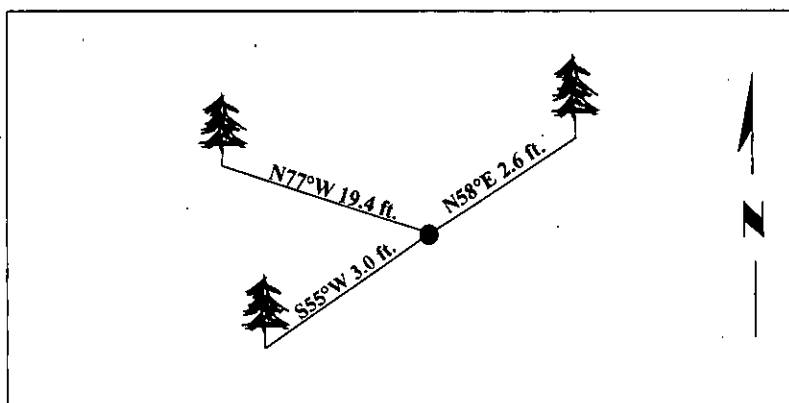
- II. Found a 3 in. diam. aluminum capped monument, protruding 4 ins. above the ground, mkd. as shown and witnessed by the original bearing trees and location tree.

from which:

- A hemlock, 18 ins. diam., bears N58°E, 2.6 ft. dist., with visible scribe.
- A location poster on a 6 in. diam. hemlock, bearing S55°W, 3.0 ft. dist. of the monument.
- A hemlock, 14 ins. diam., bears N77°W, 19.4 ft. dist., with visible scribe. (record-19.7 ft.)

- III. Painted red bands around the bearing tree and attached Land Survey Monument and Bearing Tree signs.

Magnetic Declination: 20° East.



SKETCH OF CORNER

CERTIFICATION	
I. <u>Rex O. Rice</u>	certify the information shown herein is true and correct.
<u>Rex O. Rice</u>	
I. <u>Steven A. Boyer</u>	
certify that this Corner Record correctly represents work performed by me or under my direction in compliance with the "Corner Recordation Act" (70-22-101, et seq., M.C.A.)	
<u>Steven A. Boyer</u>	
Signature of Surveyor & Seal	
Date: <u>6/25/98</u>	
Reg. No.: <u>9750LS</u>	
Employer: <u>U.S. FOREST SERVICE</u>	

Office of Clerk and Recorder, County of Lincoln. This "corner record" was filed for record on Mar 3, 1999 was noted on the cross-index plat and is assigned page No. 10310 in book No.

Coral M. Cummins B, PLS
County Official

