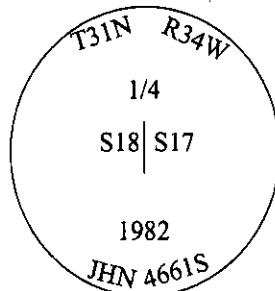


CERTIFIED CORNER RECORDATION

Corner 1/4 Secs. 17 & 18 T. 31N R. 34W P.M., MT Lincoln County

I. 1903 G.L.O. Original Record by Allen B. Benedict: Set a granite stone, 12x10x6 ins., 8 ins. in the ground, for 1/4 sec. cor., mkd. "1/4" on W. face. Established two bearing trees.

1982 Certified Corner Recordation by Jack H. Ninneman, 4661S: Found original stone in place marked "1/4" on West face. No original bearing trees found. Set a 3" x 30" aluminum capped monument marked as shown below.



from which:

- A 12" Fir, bears N56°W, 8.4 ft., scribed "S18 1/4 BT" and posted.
- A 14" Pine, bears S24°E, 19.1 feet, scribed "S17 1/4 BT" and posted.
- A location poster on an 8" Cottonwood, bears N81°E, 4.6 feet.

Buried original stone alongside.

Painted monument and accessories with bright red paint.

II. Found a 3 in. diam. aluminum capped monument, flush with the ground, mkd. as shown and witnessed by two original 1982 bearing trees and location tree.

from which:

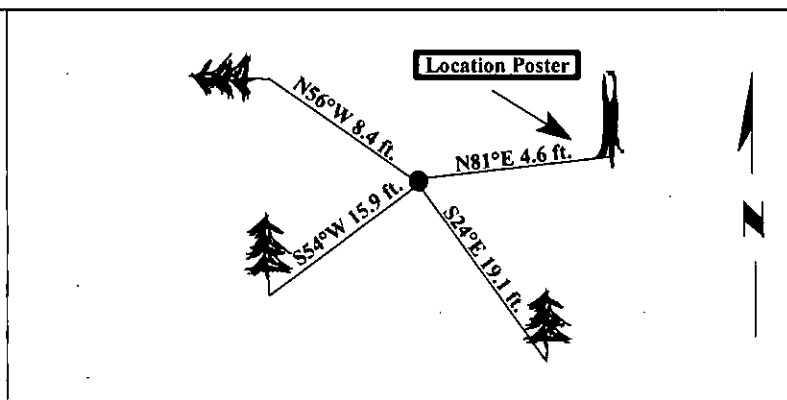
- A dead cottonwood snag, 8 ins. diam., bears N81°E, 4.6 ft. distance. (1982-location tree)
- A pine, 19 ins. diam., bears S24°E, 19.1 ft. dist., with visible scribe.
- A down fir, 13 ins. diam., bears N56°W, 8.4 ft. with visible scribe.
- A carsonite post, with a Property Boundary decal attached.

III. Established one new bearing tree:

- A pine, 13 ins. diam., bears S54°W, 15.9 ft. dist., mkd. "1/4 S18 BT".

Painted red bands around the bearing tree and attached Land Survey Monument and Bearing Tree signs.

Magnetic Declination: 20° East.

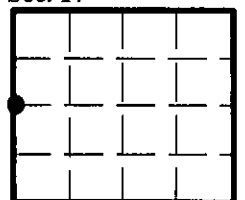


SKETCH OF CORNER

CERTIFICATION	
I. <u>Rex O. Rice</u>	certify the information shown herein is true and correct.
<i>Rex O. Rice</i>	
I. <u>Steven A. Boyer</u>	
certify that this Corner Record correctly represents work performed by me (or under my direction in compliance with the "Corner Recordation Act" (70-22-101, et seq., M.C.A.))	
<i>Steven A. Boyer</i>	
Date: <u>6/24/98</u>	Signature of Surveyor & Seal
Reg. No.: <u>9750LS</u>	
Employer: <u>U.S. FOREST SERVICE</u>	

Office of Clerk and Recorder, County of Lincoln. This "corner record" was filed for record on Mar 3, 1999 was noted on the cross-index plat and is assigned page No. 10304 in book No. _____

Coral M. Cummins By *RLB*
County Official



• - corner this sheet